

PARK LANE

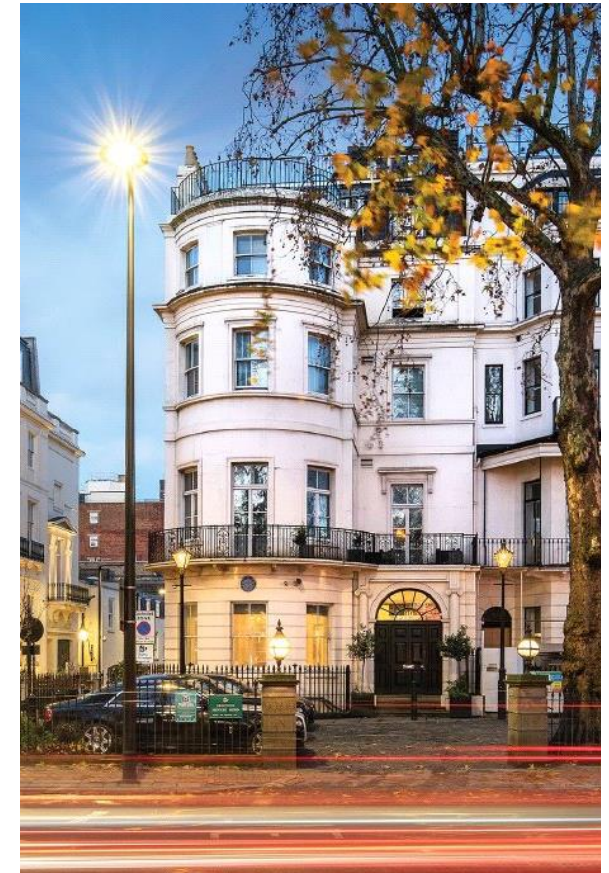
LONDON W1K

CHESTERTONS

PARK LANE

A four bedroom four bathroom duplex apartment set within a handsome period Grade II listed Georgian building extending to approximately 6,000sqft. benefitting from high ceilings, modern fixtures & fittings, private swimming pool, gym and steam room.

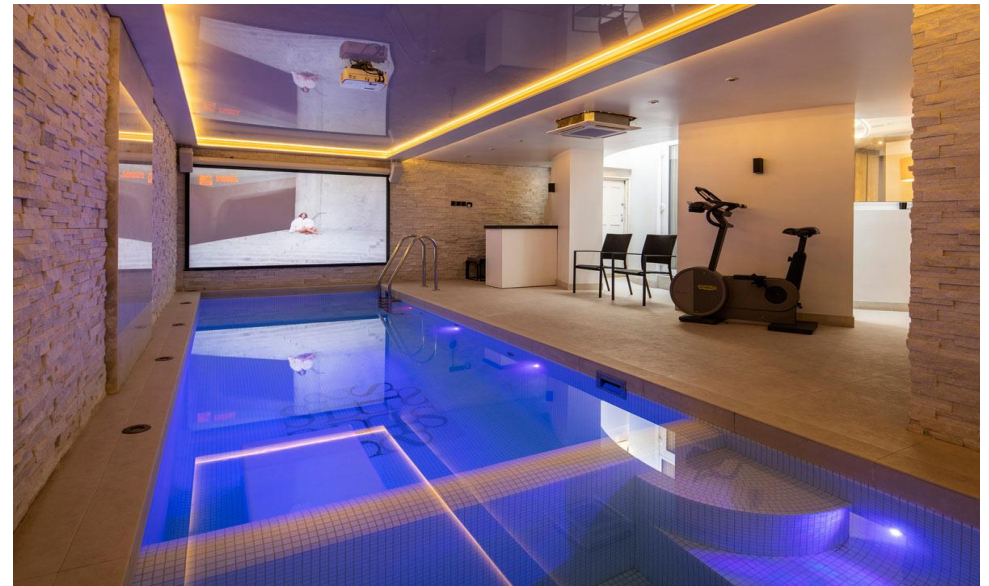




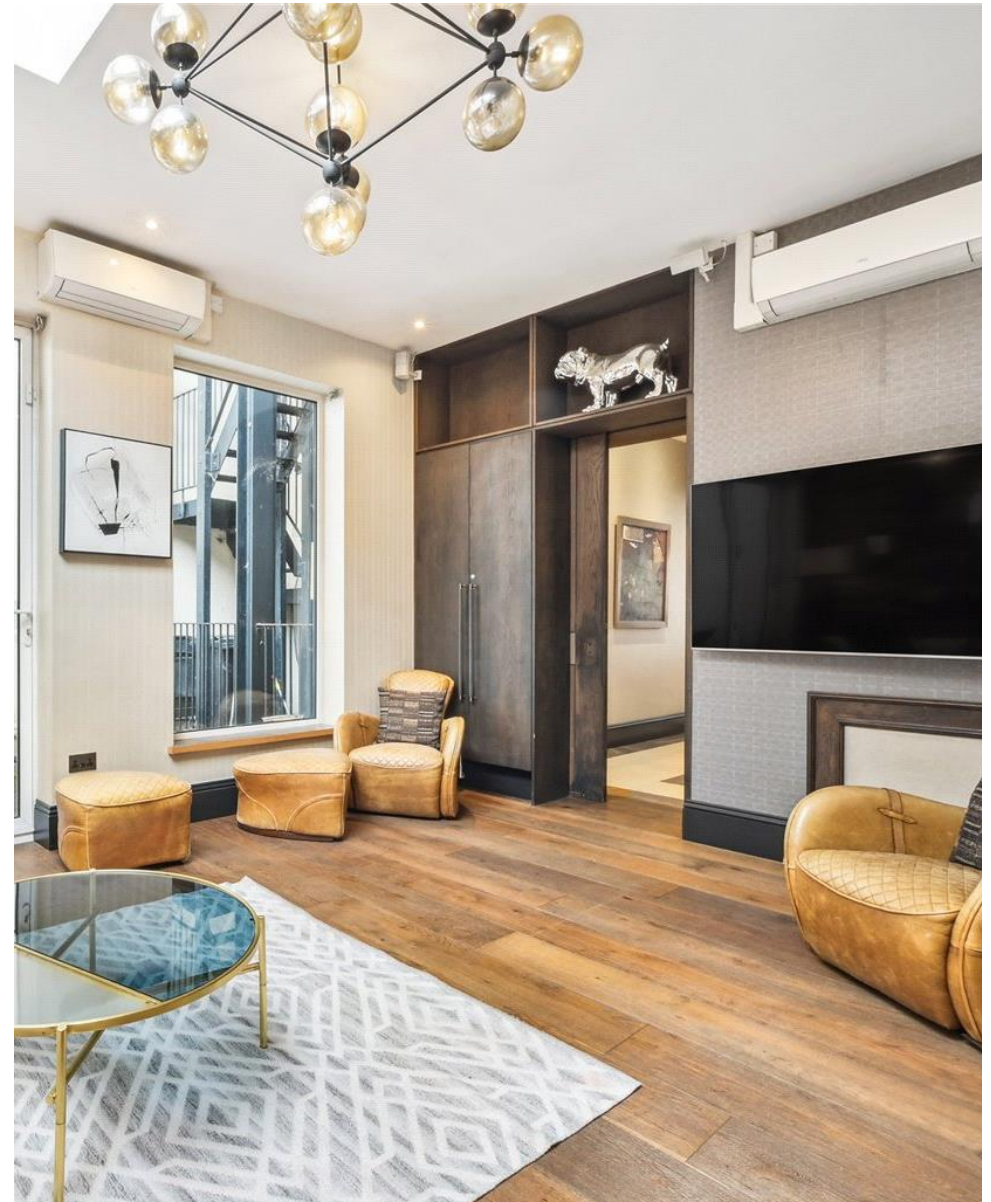
Specifications

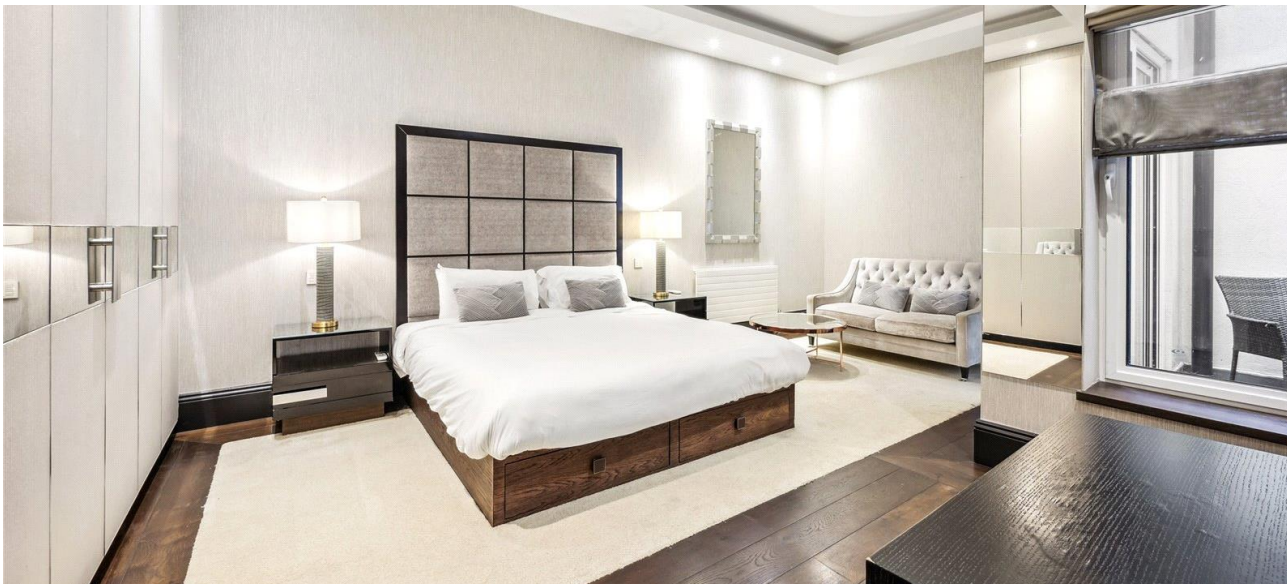
- Four bedrooms
- Four bathrooms
- Swimming pool & gym
- Approx. 6,000sqft.
- Air-con
- On-site porter
- Off street parking space
- Period features throughout

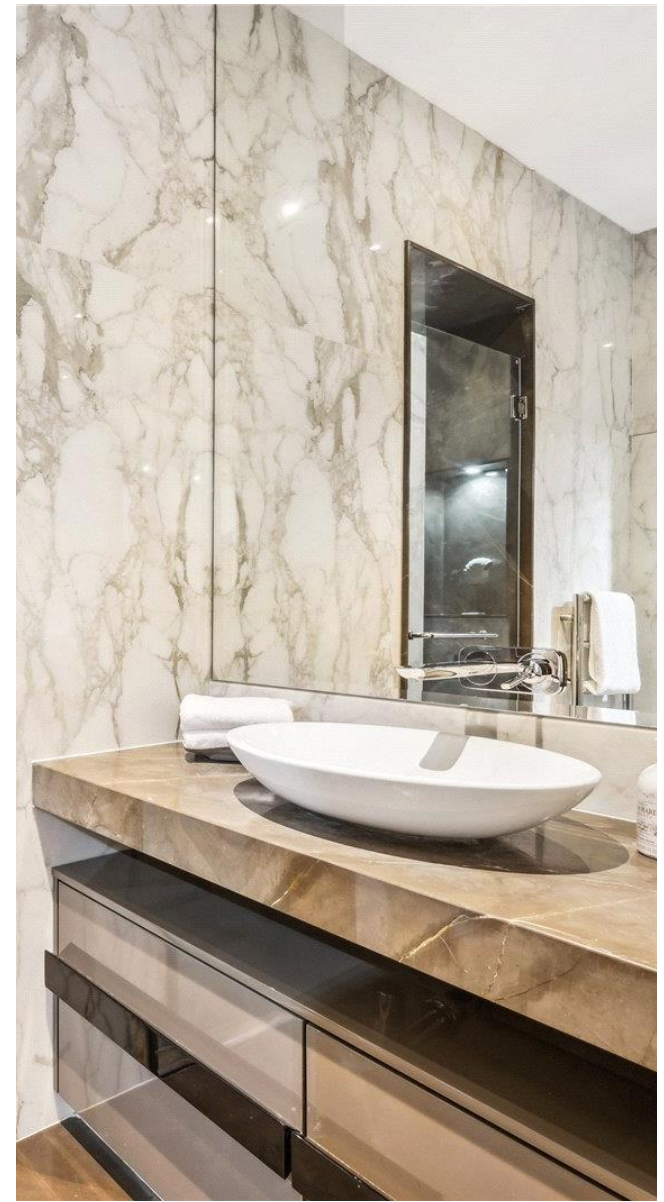
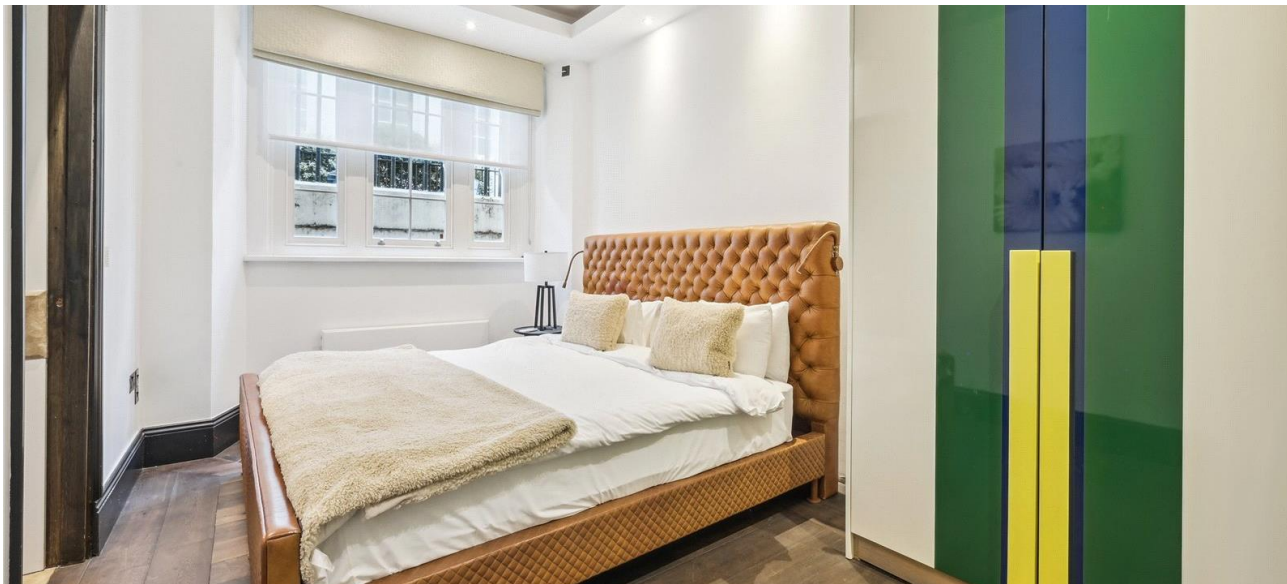




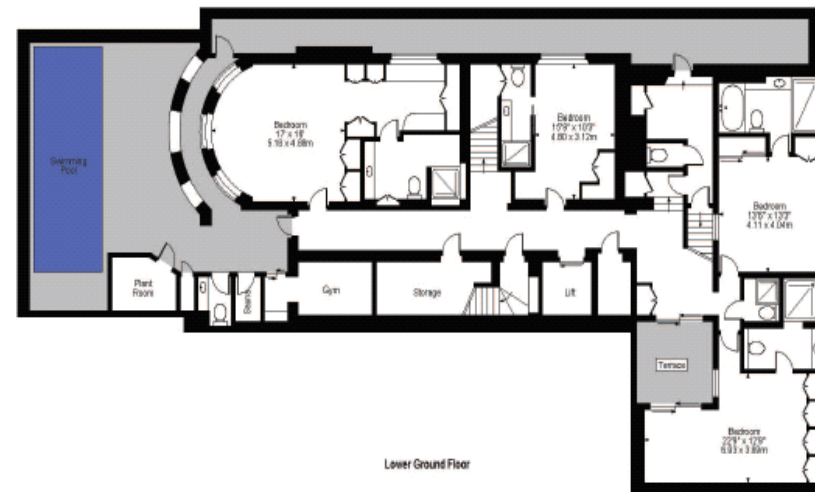
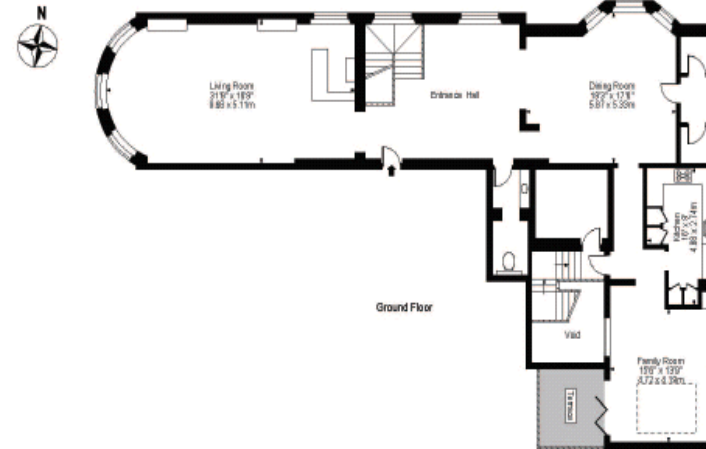








Park Lane



For Illustration Purposes Only - Not To Scale

This floor plan should be used as a general outline for guidance only and does not constitute in whole or in part an offer or contract. Any intending purchaser or lessee should satisfy themselves by inspection, searches, enquiries and full survey as to the correctness of each statement. Any areas, measurements or distances quoted are approximate and should not be used to value a property or be the basis of any sale or let.

Park Lane, W1K

Approximate gross Internal area
550.1 sqm. / 5,951 sqft.

This plan is for layout guidance only. Not drawn to scale unless stated. Windows and door openings approximate. Whilst every care is taken in the preparation of this plan, please check all dimensions, shapes and compass bearings before making decisions reliant upon them.



Chestertons Mayfair Lettings
47 South Audley Street
Mayfair, London, W1K

020 7288 8301
mayfair@chestertons.co.uk
chestertons.co.uk

Chesterton Global Ltd trading as Chestertons for themselves and for the vendor of this property whose agents they are, give notice that (i) these particulars do not constitute any part of an offer or contract, (ii) all statements contained within these particulars are made without responsibility on the part of Chestertons or the vendor, (iii) whilst made in good faith, none of the statements contained within these particulars are to be relied upon as a statement or representation of fact, (iv) any intending purchasers must satisfy themselves by inspection or otherwise as to the correctness of each of the statements contained within these particulars, (v) the vendor does not make or give either Chestertons or any person in their employment any authority to make or give representation or warranty whatsoever in relation to this property. Wide angle lenses may be used. ©Copyright Chestertons | Chesterton Global Ltd | Registered Office 40 Connaught Street, Hyde Park, London W2 2AB Registered Company Number 05334580.