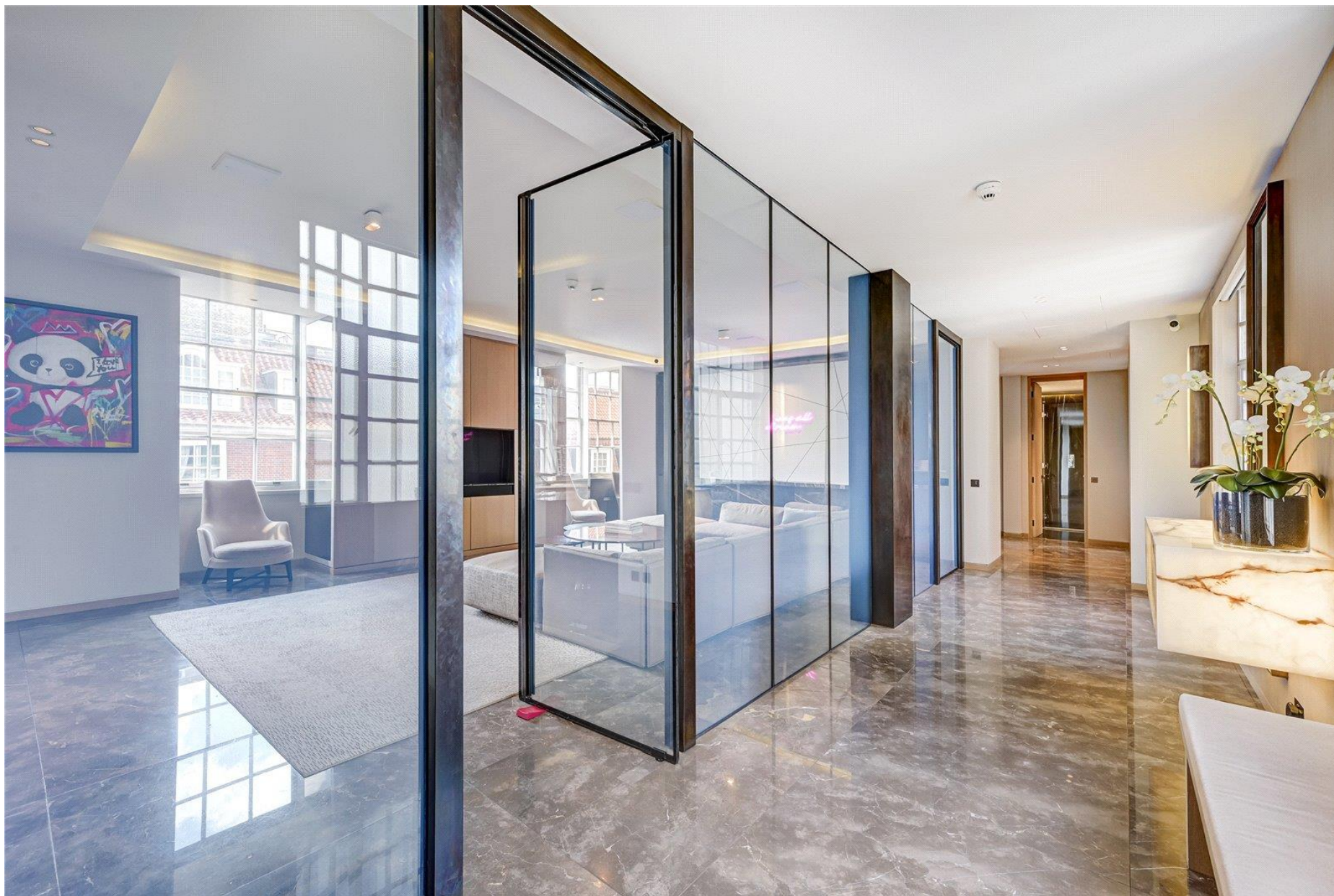


Grosvenor Square

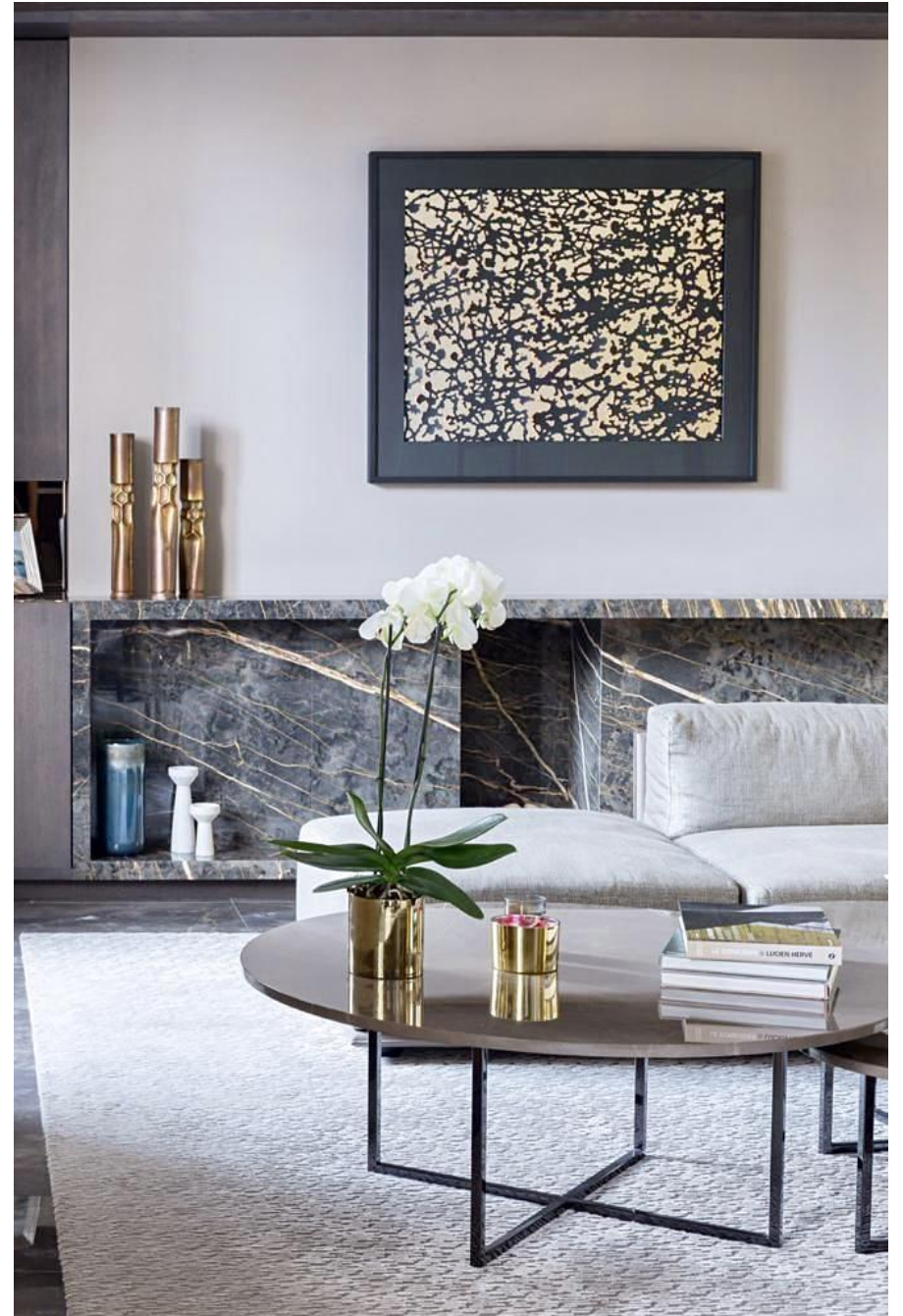
Mayfair, W1K

A spectacular, skilfully interior designed, three bedroom three bathroom fifth floor (with lift service) lateral apartment located on one of London's most exclusive and sought-after Squares.











Having undergone full extensive refurbishment some years ago, this apartment offers high specification modern living within a historical building providing an open plan living area perfect for entertaining, fully fitted modern kitchen with walk-in pantry, three large and well-proportioned double bedrooms with built-in wardrobes, two en-suites and third separate guest bathroom. The space within this apartment is designed very cleverly and utilised to best of its capacity throughout.

The apartment is enviably situated in an imposing building that features an elegant entrance hallway with visitors sitting lobby area, on-site uniformed portage, being located on the South Eastern corner of Grosvenor Square, access to Mount Street, Davies Street and Berkeley Square are of ease.

48 Grosvenor Square carries substantial history, namely being home to Charles Edmund Peczenik between 1877 and 1967 who was one of the architects involved in rebuilding the Square from late 20s into the 50s which has resulted in 48 Grosvenor Square being furnished with a Blue Plaque



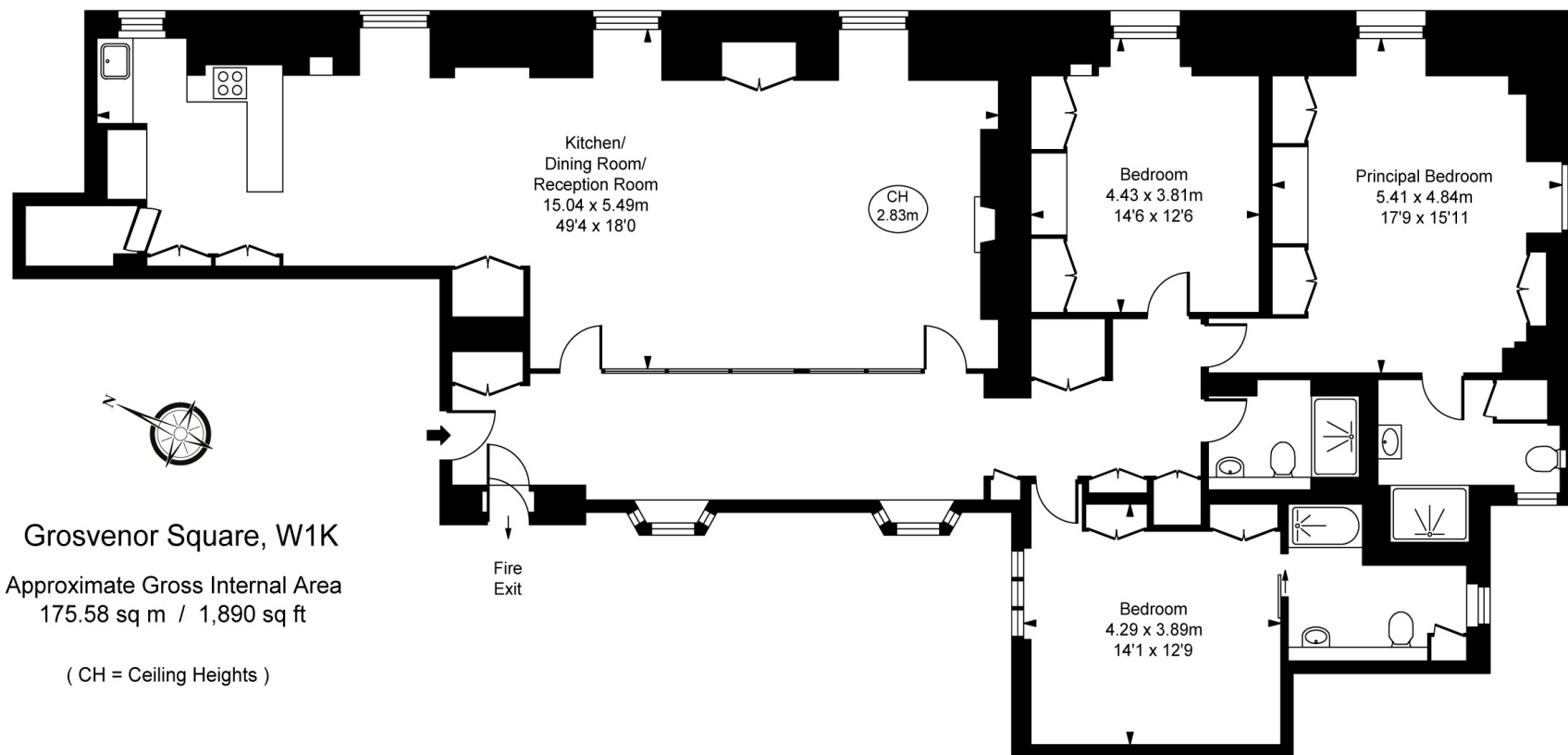
£3,600 per week (£15,600 per month)

Minimum Term: On application
Deposit Required: Six weeks
Local Authority: City of Westminster
Council Tax Band: H
EPC Rating: D
Furnishing: Furnished

Chestertons Mayfair Lettings

47 South Audley Street
 Mayfair
 London
 W1K 2QA
lettings.mayfair@chestertons.co.uk
 020 7288 8301
[chestertons.co.uk](https://www.chestertons.co.uk)

Additional tenant charges apply (fees apply to non AST tenancies only)
 Tenancy Agreement Fee: £360 inc. VAT
 References per Tenant/Guarantor: £60
 Inventory check (approx. £100 – £250 inc. VAT)
[chestertons.co.uk/property-to-rent/applicable-fees](https://www.chestertons.co.uk/property-to-rent/applicable-fees)



Grosvenor Square, W1K

Approximate Gross Internal Area
175.58 sq m / 1,890 sq ft

(CH = Ceiling Heights)

Fifth Floor

This plan is not to scale. It is for guidance and not for valuation purposes.
All measurements and areas are approximate only, and have been prepared in accordance with the current edition of the RICS Code of Measuring Practice.
© Fulham Performance