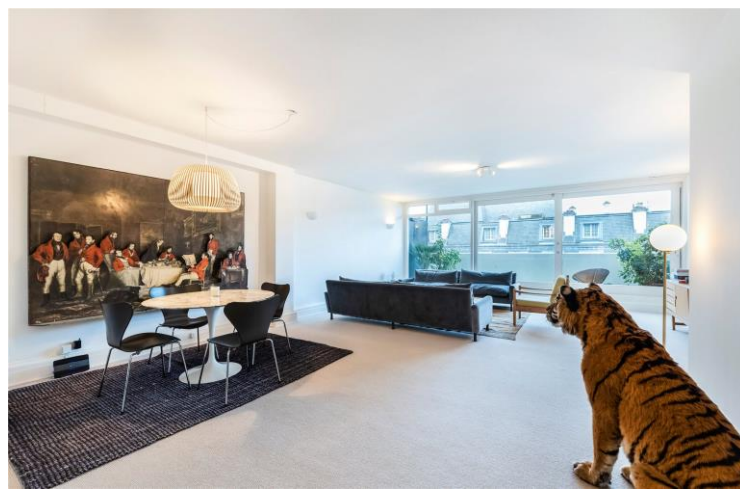




St. James's Square
St. James's, SW1Y

CHESTERTONS





Stunning duplex apartment with two private terraces and views over St. James's Square. The property extends to 1387 square feet and consists of three bedrooms and two bathrooms with a large and very bright reception room.

- Lift
- Porter
- Duplex
- Two balconies
- Professional managed

£5,100 pcm

Additional tenant charges apply (fees apply to non-AST tenancies only)

Tenancy Agreement Fee: £300

References per Tenant/Guarantor: £60

Inventory check (approx. £100 – £250 inc. VAT)

chestertons.co.uk/property-to-rent/applicable-fees

Energy Efficiency Rating		
Very energy efficient - lower running costs	Current	Potential
90-100 A		
81-89 B		
69-80 C	76	79
55-68 D		
39-54 E		
21-38 F		
1-20 G		
Not energy efficient - higher running costs		
EU Directive 2002/91/EC		
England, Scotland & Wales		

Minimum Term: 12 months
Deposit Required: £7,061.54
Local Authority: City of Westminster
Council Tax Band: H
EPC Rating: C
Furnished, Part Furnished, Unfurnished

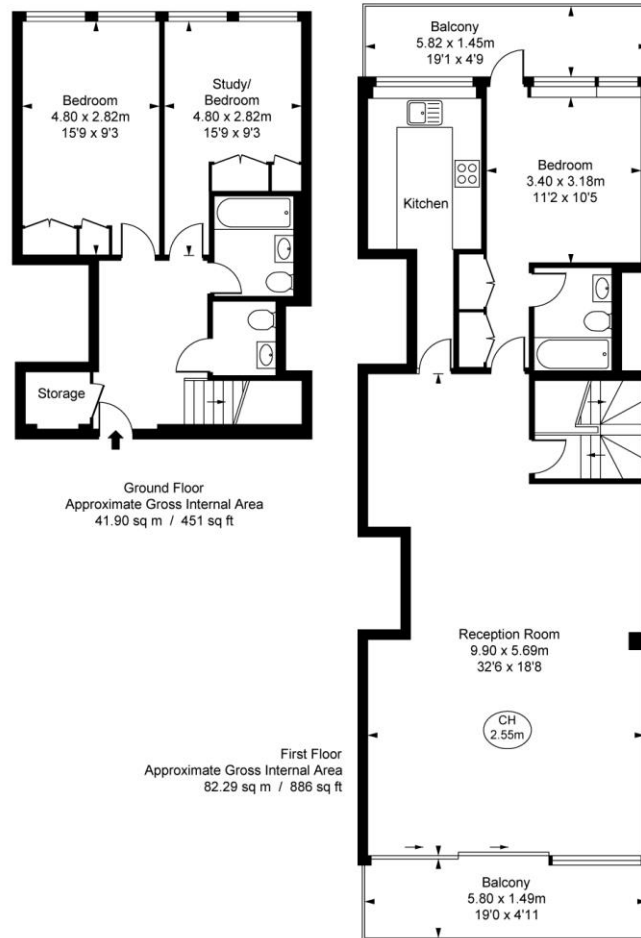
Chestertons Mayfair Lettings

47 South Audley Street
 Mayfair
 London
 W1K 2QA

mayfairlettingsusers@chestertons.co.uk
 020 7288 8301

St James Square, SW1Y
Approximate Gross Internal Area
124.19 sq m / 1,337 sq ft

(CH = Ceiling Heights)



This plan is not to scale. It is for guidance and not for valuation purposes.
All measurements and areas are approximate only, and have been prepared in accordance with the current edition of the RICS Code of Measuring Practice.
© Fulham Performance

Chesterton UK Services Limited trading as Chestertons for themselves and for the vendor of this property whose agents they are, give notice that (i) these particulars do not constitute any part of an offer or contract, (ii) all statements contained within these particulars are made without responsibility on the part of Chestertons or the vendor, (iii) whilst made in good faith, none of the statements contained within these particulars are to be relied upon as a statement or representation of fact, (iv) any intending purchasers must satisfy themselves by inspection or otherwise as to the correctness of each of the statements contained within these particulars, (v) the vendor does not make or give either Chestertons or any person in their employment any authority to make or give representation or warranty whatsoever in relation to this property. Wide angle lenses may be used. ©Copyright Chestertons | Chesterton Global Ltd | Registered Office 40 Connaught Street, Hyde Park, London W2 2AB Registered Company Number 05334580.



This paper is
100% recyclable