



North Audley Street
Mayfair, W1K

CHESTERTONS





A modern and centrally located three bedroom three bathroom duplex apartment with two private terraces, direct lift access and approx. 1,320sqft.

- Three bedrooms
- Three bathrooms
- Two terraces
- 1,320sqft.
- Prime location

£10,183.33 pcm

Additional tenant charges apply (fees apply to non-AST tenancies only)

Tenancy Agreement Fee: £300

References per Tenant/Guarantor: £60

Inventory check (approx. £100 – £250 inc. VAT)

chestertons.co.uk/property-to-rent/applicable-fees

Energy Efficiency Rating		
Very energy efficient - lower running costs	Current	Potential
90-100 A		
81-90 B		
71-81 C	82	82
61-71 D		
51-61 E		
41-51 F		
31-41 G		
Not energy efficient - higher running costs		
EU Directive 2002/91/EC		

Minimum Term: 12 months
Deposit Required: £14,100.00
Local Authority: City of London
Council Tax Band: H
EPC Rating: B
Furnished

Chestertons Mayfair Lettings

47 South Audley Street
 Mayfair
 London
 W1K 2QA

mayfairlettingsusers@chestertons.co.uk
 020 7288 8301

North Audley Street, W1K

Approximate Gross Internal Area
122.66 sq m / 1,320 sq ft
(Excluding Lift)



(Including restricted height
under 1.5m [- - - - -])

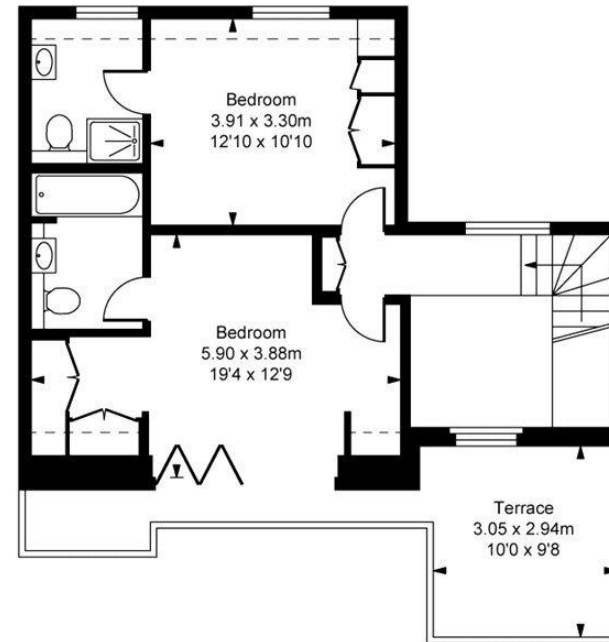
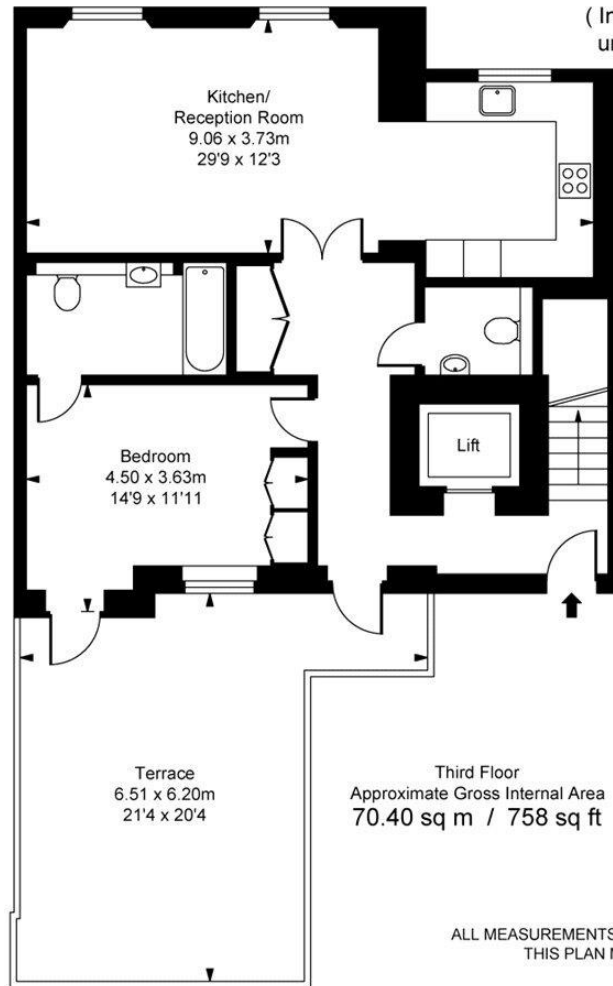


ILLUSTRATION FOR IDENTIFICATION PURPOSES ONLY
ALL MEASUREMENTS ARE MAXIMUM, AND INCLUDE WINDOW BAYS AND WARDROBES WHERE APPLICABLE
THIS PLAN MUST NOT BE REPRODUCED BY ANY OTHER PERSON WITHOUT PERMISSION

Chesterton UK Services Limited trading as Chestertons for themselves and for the vendor of this property whose agents they are, give notice that (i) these particulars do not constitute any part of an offer or contract, (ii) all statements contained within these particulars are made without responsibility on the part of Chestertons or the vendor, (iii) whilst made in good faith, none of the statements contained within these particulars are to be relied upon as a statement or representation of fact, (iv) any intending purchasers must satisfy themselves by inspection or otherwise as to the correctness of each of the statements contained within these particulars, (v) the vendor does not make or give either Chestertons or any person in their employment any authority to make or give representation or warranty whatsoever in relation to this property. Wide angle lenses may be used. ©Copyright Chestertons | Chesterton Global Ltd | Registered Office 40 Connaught Street, Hyde Park, London W2 2AB Registered Company Number 05334580.

