



Eaton House
39-40 Upper Grosvenor Street, W1K





Newly refurbished three bedroom, three bathroom lateral apartment finished to a high standard throughout, set within an exclusive period block in central Mayfair benefitting from lift access and 24 hour uniformed porter.

- Three Double Bedrooms
- Three Bathrooms
- Newly Refurbished
- Marble bathrooms
- High Spec Kitchen
- Wooden Flooring throughout

£2,350 per week (£10,183.33 pcm)

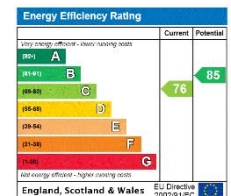
Additional tenant charges apply (fees apply to non-AST tenancies only)

Tenancy Agreement Fee: £300

References per Tenant/Guarantor: £60

Inventory check (approx. £100 – £250 inc. VAT)

chestertons.co.uk/property-to-rent/applicable-fees



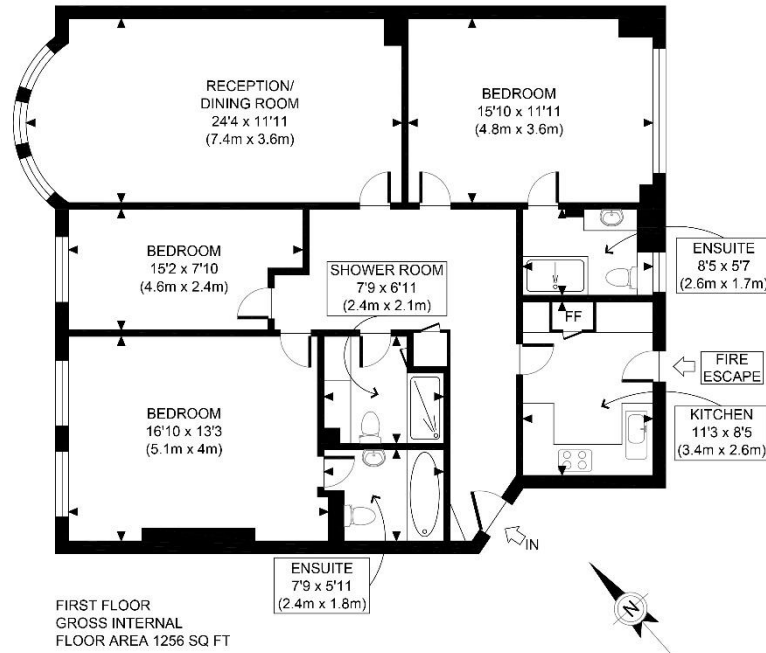
Minimum Term: 12 months
Deposit Required: £14,100.00
Local Authority: Westminster
Council Tax Band: H
EPC Rating: C
Furnished, Unfurnished

Chestertons Mayfair Lettings

47 South Audley Street
 Mayfair
 London
 W1K 2QA

mayfairlettingsusers@chestertons.co.uk

020 7288 8301



<p>APPROX. GROSS INTERNAL FLOOR AREA 1256 SQ FT / 117 SQM</p>	<p>Eaton House W1K</p>
<p>Disclaimer: Floor plan measurements are approximate and are for illustrative purposes only.</p>	<p>date 06/02/21</p>
<p>While we do not doubt the floor plan accuracy and completeness, you or your advisors should conduct a careful, independent investigation of the property in respect of monetary valuation</p>	<p>photoplan</p>

Chesterton UK Services Limited trading as Chestertons for themselves and for the vendor of this property whose agents they are, give notice that (i) these particulars do not constitute any part of an offer or contract, (ii) all statements contained within these particulars are made without responsibility on the part of Chestertons or the vendor, (iii) whilst made in good faith, none of the statements contained within these particulars are to be relied upon as a statement or representation of fact, (iv) any intending purchasers must satisfy themselves by inspection or otherwise as to the correctness of each of the statements contained within these particulars, (v) the vendor does not make or give either Chestertons or any person in their employment any authority to make or give representation or warranty whatsoever in relation to this property. Wide angle lenses may be used. ©Copyright Chestertons | Chesterton Global Ltd | Registered Office 40 Connaught Street, Hyde Park, London W2 2AB Registered Company Number 05334580.

