



Upper Grosvenor Street

Mayfair, W1K

£19,500 per month
(£4,500 per week)

A stunning duplex three bedroom three bathroom apartment situated within a well managed portered building only moments away from Grosvenor Square.

CHESTERTONS



Upper Grosvenor Street

Mayfair, W1K

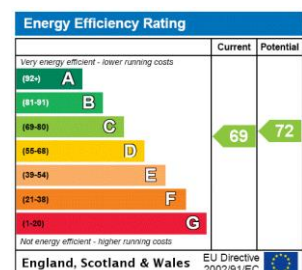
- Air conditioning
- Wooden floors
- Three full bathrooms and guest W/C
- Porter
- List
- Natural light



Situated on first and second floors of sought-after apartment building, this three bedroom apartment extends to over 1,800 sq ft and is located a few moments from Grosvenor Square by the prestigious Chancery Rosewood hotel. Boasting a 37 ft wide double reception room with separate dining area and all five windows facing towards Upper Grosvenor Street, ideal for entertaining. Comprising three double bedrooms, two en-suite bathrooms, additional shower room, separate eat-in kitchen and a guest cloakroom.

The property has access to a communal garden area and further benefits include 24 hour portage and passenger lift to both floors. Upper Grosvenor Street is close to Grosvenor Square and Mount Street with its vast array of boutiques and restaurants.

Minimum Term: 12 months
Deposit Required: £27,000.00
Local Authority: Westminster
Council Tax Band: H
EPC Rating: C
Unfurnished



Chestertons Mayfair Lettings

47 South Audley Street
 Mayfair
 London
 W1K 2QA
mayfairlettingsusers@chestertons.co.uk
 020 7288 8301
chestertons.co.uk

Additional tenant charges apply (fees apply to non-AST tenancies only)
 Tenancy Agreement Fee: £300
 References per Tenant/Guarantor: £60
 Inventory check (approx. £100 – £250 inc. VAT)
chestertons.co.uk/property-to-rent/applicable-fees

Upper Grosvenor Street, W1K

Approximate Gross Internal Area
167.53 sq m / 1,803 sq ft

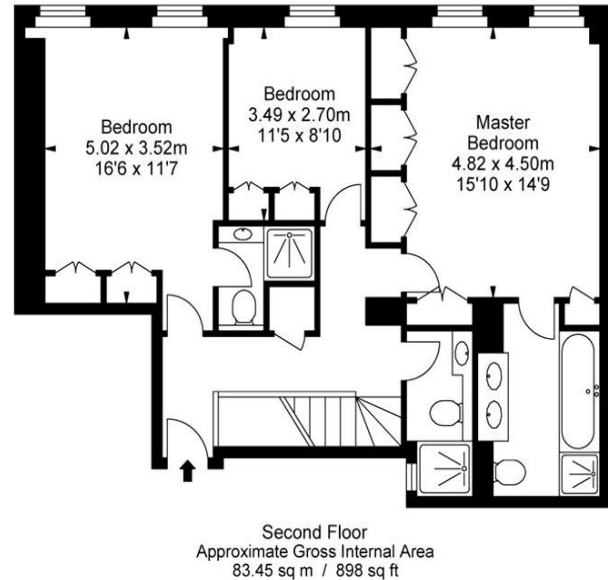
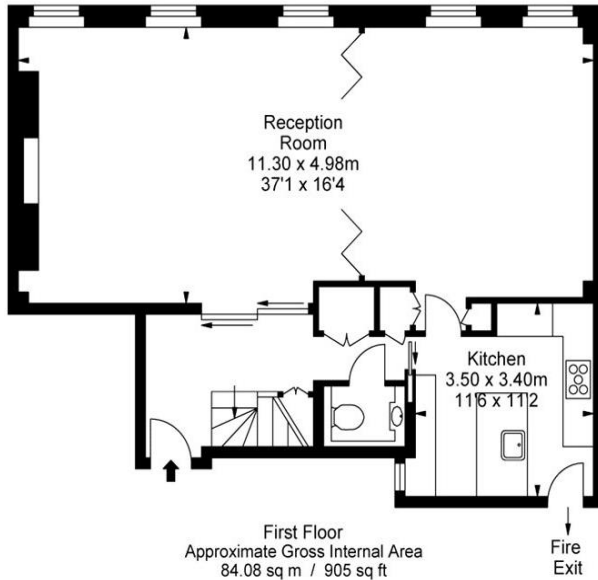


ILLUSTRATION FOR IDENTIFICATION PURPOSES ONLY
ALL MEASUREMENTS ARE MAXIMUM, AND INCLUDE WINDOW BAYS AND WARDROBES WHERE APPLICABLE
THIS PLAN MUST NOT BE REPRODUCED BY ANY OTHER PERSON WITHOUT PERMISSION