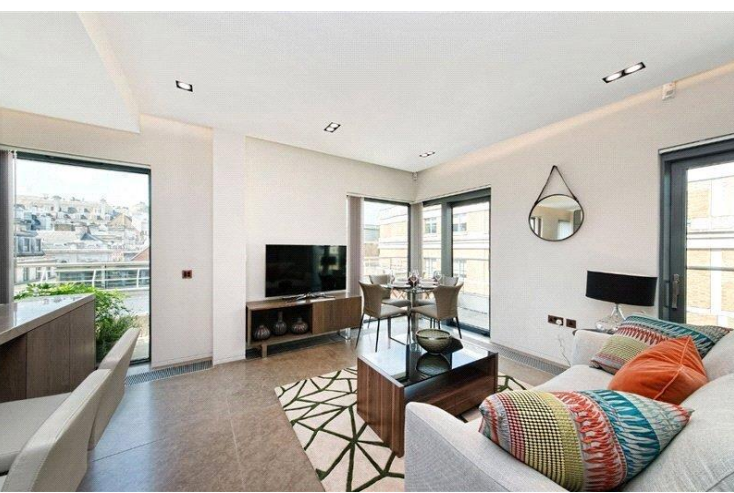




Babmaes Street  
St. James's, SW1Y

CHESTERTONS









All bills included & flexible tenancy lengths - A small boutique development of one, two and three bedroom apartments located only a stone's throw of the world famous Jermyn Street in the heart of St. James's available on flexible terms.

**£9,533.33 pcm**

Additional tenant charges apply (fees apply to non-AST tenancies only)

Tenancy Agreement Fee: £300

References per Tenant/Guarantor: £60

Inventory check (approx. £100 – £250 inc. VAT)

[chestertons.co.uk/property-to-rent/applicable-fees](http://chestertons.co.uk/property-to-rent/applicable-fees)

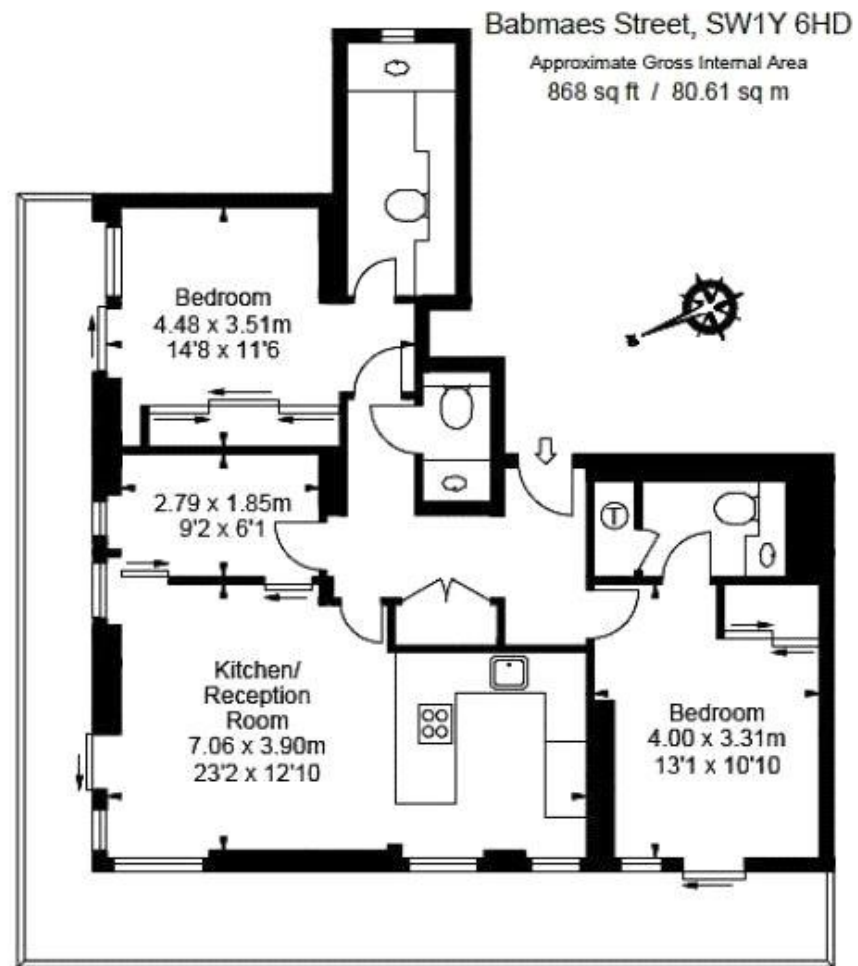
Energy Efficiency Rating		
Energy efficient - lower running costs	Current	Potential
90-100 <b>A</b>		
81-90 <b>B</b>		
69-80 <b>C</b>	80	80
55-68 <b>D</b>		
49-54 <b>E</b>		
41-48 <b>F</b>		
31-39 <b>G</b>		
Not energy efficient - higher running costs		
EU Directive 2002/91/EC		
England, Scotland & Wales		

**Deposit Required:** £4,400.00  
**Local Authority:** City of Westminster  
**Council Tax Band:** G  
**EPC Rating:** C  
**Furnished**

**Chestertons Mayfair Lettings**

47 South Audley Street  
 Mayfair  
 London  
 W1K 2QA

[mayfairlettingsusers@chestertons.co.uk](mailto:mayfairlettingsusers@chestertons.co.uk)  
 020 7288 8301



Seventh Floor

Chesterton UK Services Limited trading as Chestertons for themselves and for the vendor of this property whose agents they are, give notice that (i) these particulars do not constitute any part of an offer or contract, (ii) all statements contained within these particulars are made without responsibility on the part of Chestertons or the vendor, (iii) whilst made in good faith, none of the statements contained within these particulars are to be relied upon as a statement or representation of fact, (iv) any intending purchasers must satisfy themselves by inspection or otherwise as to the correctness of each of the statements contained within these particulars, (v) the vendor does not make or give either Chestertons or any person in their employment any authority to make or give representation or warranty whatsoever in relation to this property. Wide angle lenses may be used. ©Copyright Chestertons | Chesterton Global Ltd | Registered Office 40 Connaught Street, Hyde Park, London W2 2AB Registered Company Number 05334580.



This paper is  
100% recyclable