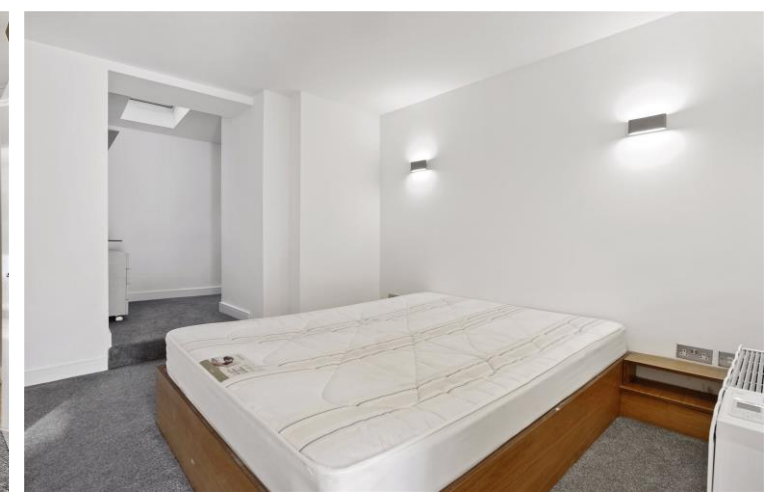




South Molton Street
Mayfair, W1K

CHESTERTONS





A well situated one bedroom apartment located on a pedestrianised street in Mayfair, conveniently located for Oxford Street and moments away from Bond Street underground station.

•

£720 per week (£3,120 pcm)

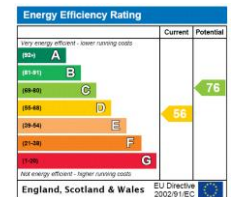
Additional tenant charges apply (fees apply to non-AST tenancies only)

Tenancy Agreement Fee: £300

References per Tenant/Guarantor: £60

Inventory check (approx. £100 – £250 inc. VAT)

chestertons.co.uk/property-to-rent/applicable-fees



Minimum Term: 12 months
Deposit Required: £3,600.00
Local Authority: Westminster
Council Tax Band: E
EPC Rating: D
Furnished, Part Furnished

Chestertons Mayfair Lettings

47 South Audley Street

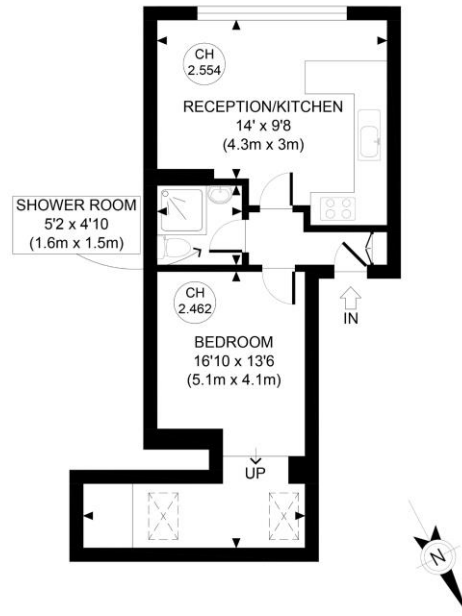
Mayfair

London

W1K 2QA

mayfair@chestertons.co.uk

020 7288 8301



FIRST FLOOR
GROSS INTERNAL
FLOOR AREA 368 SQ FT

APPROX. GROSS INTERNAL FLOOR AREA 368 SQ FT / 34 SQM	South Molton St. W1K
Disclaimer: Floor plan measurements are approximate and are for illustrative purposes only. While we do not doubt the floor plan accuracy and completeness, you or your advisors should conduct a careful, independent investigation of the property in respect of monetary valuation	date 29/07/20
	photoplan

Chesterton Global Ltd trading as Chestertons for themselves and for the vendor of this property whose agents they are, give notice that (i) these particulars do not constitute any part of an offer or contract, (ii) all statements contained within these particulars are made without responsibility on the part of Chestertons or the vendor, (iii) whilst made in good faith, none of the statements contained within these particulars are to be relied upon as a statement or representation of fact, (iv) any intending purchasers must satisfy themselves by inspection or otherwise as to the correctness of each of the statements contained within these particulars, (v) the vendor does not make or give either Chestertons or any person in their employment any authority to make or give representation or warranty whatsoever in relation to this property. Wide angle lenses may be used. ©Copyright Chestertons | Chesterton Global Ltd | Registered Office 40 Connaught Street, Hyde Park, London W2 2AB Registered Company Number 05334580.



This paper is
100% recyclable