



Saddle Yard
Mayfair, W1J

CHESTERTONS





A rarely available three bedroom two bathroom mews house within a gated community.

This mews house is stretched across two floors, with the main living space and kitchen being located on the ground floor, two bedrooms sharing a bathroom on the first floor and the largest bedroom with a small Juliet balcony and bathroom on the second floor.



- Three bedrooms
- Two bathrooms
- Approx. 1,121sqft.
- 24 hour porter service

£1,400 per week (£6,066.67 pcm)

Additional tenant charges apply (fees apply to non-AST tenancies only)

Tenancy Agreement Fee: £300

References per Tenant/Guarantor: £60

Inventory check (approx. £100 – £250 inc. VAT)

chestertons.co.uk/property-to-rent/applicable-fees

Energy Efficiency Rating		Current	Potential
90-100	A		
81-89	B		
72-80	C		82
63-71	D	55	
54-62	E		
45-53	F		
35-44	G		

Not energy efficient - higher running costs

England, Scotland & Wales EU Directive 2002/91/EC

Minimum Term: 12 months
Deposit Required: £8,400.00
Local Authority: City of Westminster
Council Tax Band: H
EPC Rating: D
Furnished

Chestertons Mayfair Lettings

47 South Audley Street

Mayfair

London

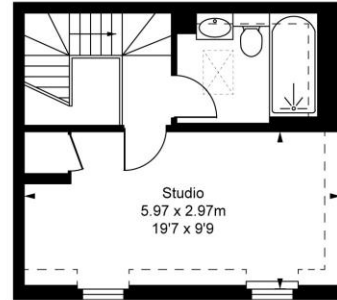
W1K 2QA

mayfair@chestertons.co.uk

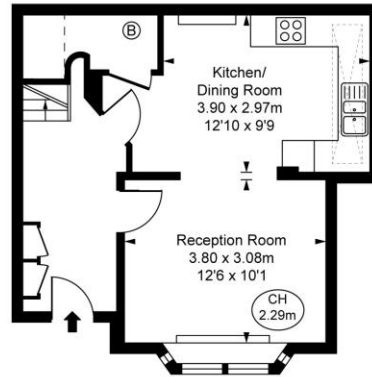
020 7288 8301

Saddle Yard, W1J
 Approximate Gross Internal Area
104.18 sq m / 1,121 sq ft

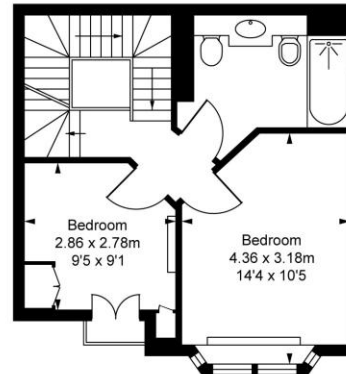
(Including restricted height
 under 1.5m (-----))
 (CH = Ceiling Heights)



Second Floor
 Approximate Gross Internal Area
 30.82 sq m / 332 sq ft



Ground Floor
 Approximate Gross Internal Area
 36.75 sq m / 396 sq ft



First Floor
 Approximate Gross Internal Area
 36.61 sq m / 394 sq ft



This plan is not to scale. It is for guidance and not for valuation purposes.
 All measurements and areas are approximate only, and have been prepared in accordance with the current edition of the RICS Code of Measuring Practice.
 © Fulham Performance

Chesterton Global Ltd trading as Chestertons for themselves and for the vendor of this property whose agents they are, give notice that (i) these particulars do not constitute any part of an offer or contract, (ii) all statements contained within these particulars are made without responsibility on the part of Chestertons or the vendor, (iii) whilst made in good faith, none of the statements contained within these particulars are to be relied upon as a statement or representation of fact, (iv) any intending purchasers must satisfy themselves by inspection or otherwise as to the correctness of each of the statements contained within these particulars, (v) the vendor does not make or give either Chestertons or any person in their employment any authority to make or give representation or warranty whatsoever in relation to this property. Wide angle lenses may be used. ©Copyright Chestertons | Chesterton Global Ltd | Registered Office 40 Connaught Street, Hyde Park, London W2 2AB Registered Company Number 05334580.



This paper is
 100% recyclable