



Grosvenor Square
Mayfair, W1K

CHESTERTONS





Spacious, recently refurbished, duplex apartment on the top two floors of a prestigious building on Grosvenor Square benefitting from lift and 24 hour uniformed on-site portage. Approx. 2,354sqft.

- Four bedrooms
- Three bathrooms
- Sixth and seventh floor duplex with lift
- On-site porter

£4,500 per week (£19,500 pcm)

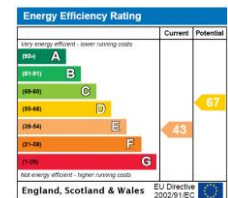
Additional tenant charges apply (fees apply to non-AST tenancies only)

Tenancy Agreement Fee: £300

References per Tenant/Guarantor: £60

Inventory check (approx. £100 – £250 inc. VAT)

chestertons.co.uk/property-to-rent/applicable-fees



Minimum Term: 12 months
Deposit Required: £27,000.00
Local Authority: Westminster City Council
Council Tax Band: TBC
EPC Rating: E

Chestertons Mayfair Lettings

47 South Audley Street

Mayfair

London

W1K 2QA

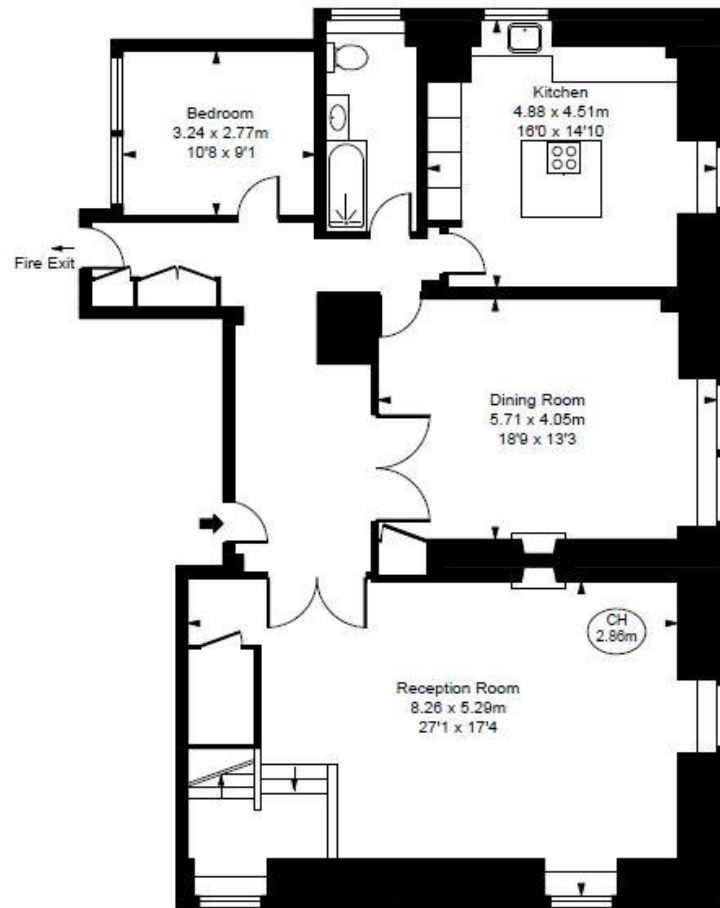
lettings.mayfair@chestertons.co.uk

020 7288 8301

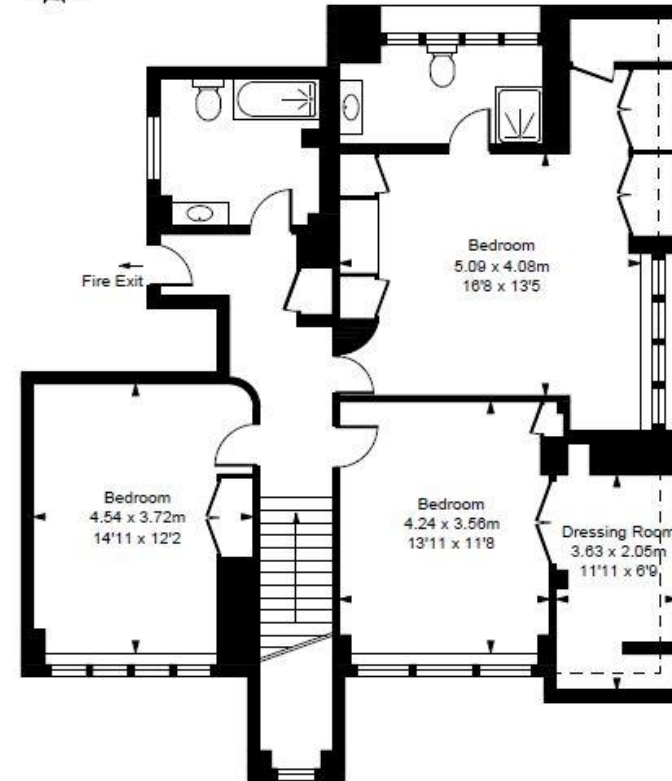
40, 35-37 Grosvenor Square, W1K 2HN

Approximate Gross Internal Area
218.66 sq m / 2,354 sq ft

(Including restricted height
under 1.5m □ □ □ □)
(CH = Ceiling Heights)



Sixth Floor
Approximate Gross Internal Area
120.98 sq m / 1,302 sq ft



Seventh Floor
Approximate Gross Internal Area
97.68 sq m / 1,051 sq ft

This plan is not to scale. It is for guidance and not for valuation purposes.
All measurements and areas are approximate only, and have been prepared in accordance with the current edition of the RICS Code of Measuring Practice.
© Fulham Performance

Chesterton Global Ltd trading as Chestertons for themselves and for the vendor of this property whose agents they are, give notice that (i) these particulars do not constitute any part of an offer or contract, (ii) all statements contained within these particulars are made without responsibility on the part of Chestertons or the vendor, (iii) whilst made in good faith, none of the statements contained within these particulars are to be relied upon as a statement or representation of fact, (iv) any intending purchasers must satisfy themselves by inspection or otherwise as to the correctness of each of the statements contained within these particulars, (v) the vendor does not make or give either Chestertons or any person in their employment any authority to make or give representation or warranty whatsoever in relation to this property. Wide angle lenses may be used. ©Copyright Chestertons | Chesterton Global Ltd | Registered Office 40 Connaught Street, Hyde Park, London W2 2AB Registered Company Number 05334580.



This paper is
100% recyclable