



Morshead Mansions

Morshead Road, W9

£3,500 per month
(£807.69 per week)

Stylish second floor property in this fantastic mansion flat in the heart of Little Venice. The property comprises of bright reception, stylish kitchen, master bedroom with en-suite, two further double bedrooms & family bathroom.

CHESTERTONS



Morshead Mansions

Morshead Road, W9

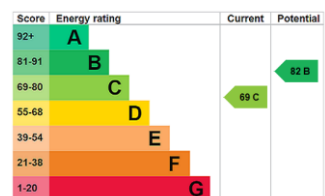
- Smart Mansion Block
- Three Large Bedrooms & Two Modern Bathrooms
- Spacious Reception With Wonderful View Over Paddington Recreation Ground
- Close To Both Warwick Avenue & Maida Vale Tubes



Set on the second floor of this ever popular period mansion block is this larger than average end of terrace stylish and spacious three bedroom apartment.

Spanning approximately 1100 square feet and having been carefully and tastefully refurbished by the current owners to create warm and attractive family accommodation, the apartment includes a large and bright reception room with stunning views over the park and a fully fitted and modern kitchen. A sizeable and quiet master bedroom with abundant storage overlooking the communal gardens benefits from an en suite shower room. Two further large bedrooms use a large and airy family bathroom.

Minimum Term: 12 months
Deposit Required: 5 weeks
Local Authority: City of Westminster
Council Tax Band: E
EPC Rating: C
Unfurnished

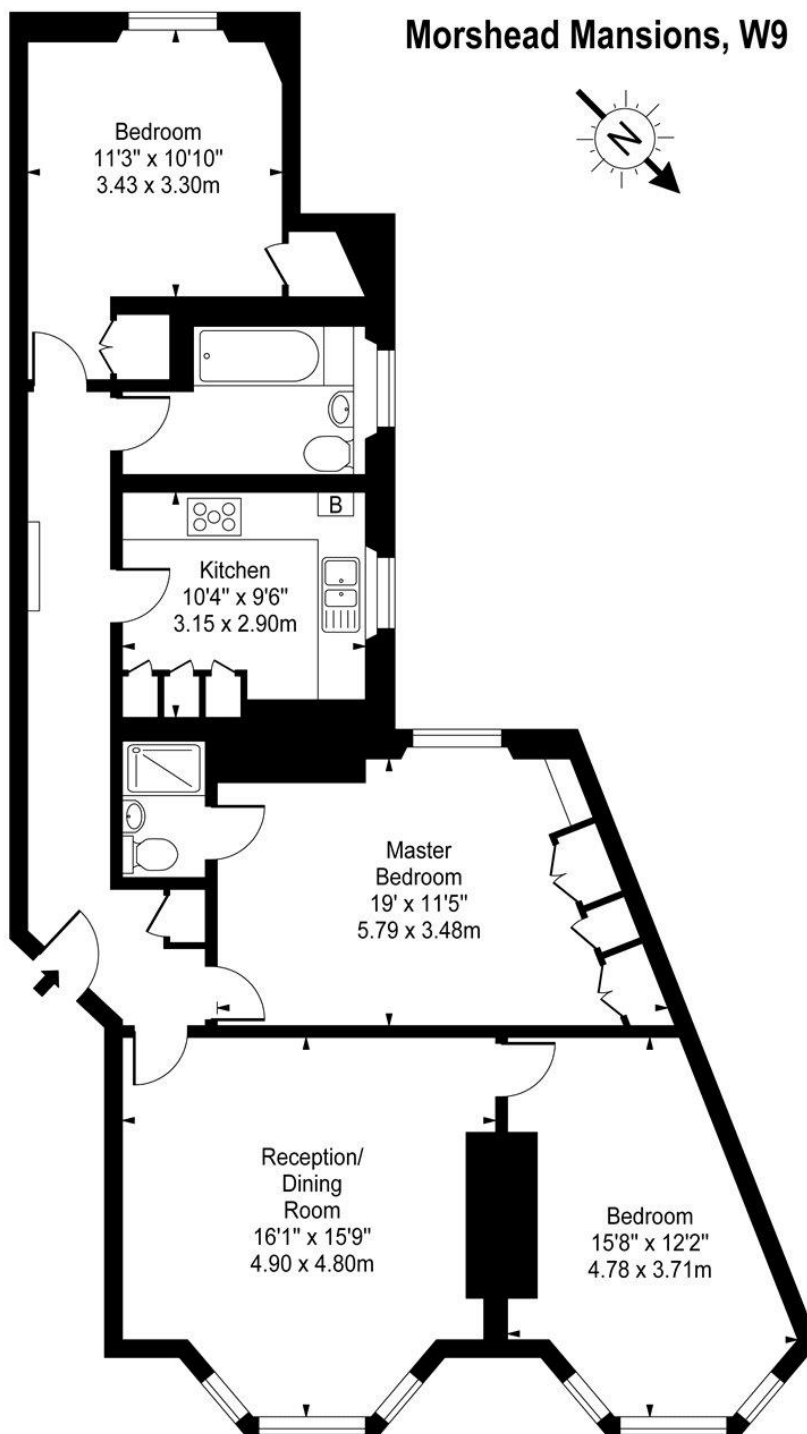


Chestertons Little Venice Lettings

26 Clifton Road
Maida Vale
London
W9 1SX
littlevenicelettingsusers@chestertons.co.uk
02072662369
chestertons.co.uk

Additional tenant charges apply (fees apply to non-AST tenancies only)
Tenancy Agreement Fee: £300
References per Tenant/Guarantor: £60
Inventory check (approx. £100 – £250 inc. VAT)
chestertons.co.uk/property-to-rent/applicable-fees

Morshead Mansions, W9



Second Floor

Approx Gross Internal Area **1074 Sq Ft - 99.77 Sq M**

For Illustration Purposes Only - Not To Scale

www.goldlens.co.uk

Ref. No. 008447J

