



# Clifton Gardens

London, W9

£2,600 per month  
(£600 per week)

A beautiful two bedroom flat in a sought after White stucco set in the heart of Little Venice. Compromising of two double bedrooms, master en-suite, open plan reception and balcony .



# Clifton Gardens

London, W9

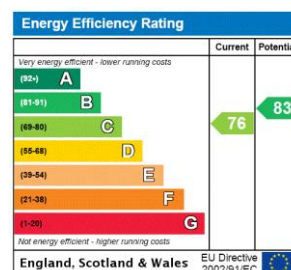
- Two bedrooms
- Two bathroom
- Part furnished
- Balcony
- EPC
- 784 SQFT



A beautiful two bedroom flat in a sought after White stucco set in the heart of Little Venice. Comprising of two double bedrooms, master en-suite, open plan reception and balcony .

Clifton Gardens is ideally situated moments away from all the amenities of Little Venice and close to excellent transport links including Warwick Avenue underground station and the Elizabeth Line from Paddington station.

**Minimum Term:** 12 months  
**Deposit Required:** 5 weeks  
**Local Authority:** City Of Westminster  
**Council Tax Band:** F  
**EPC Rating:** C  
**Part Furnished**



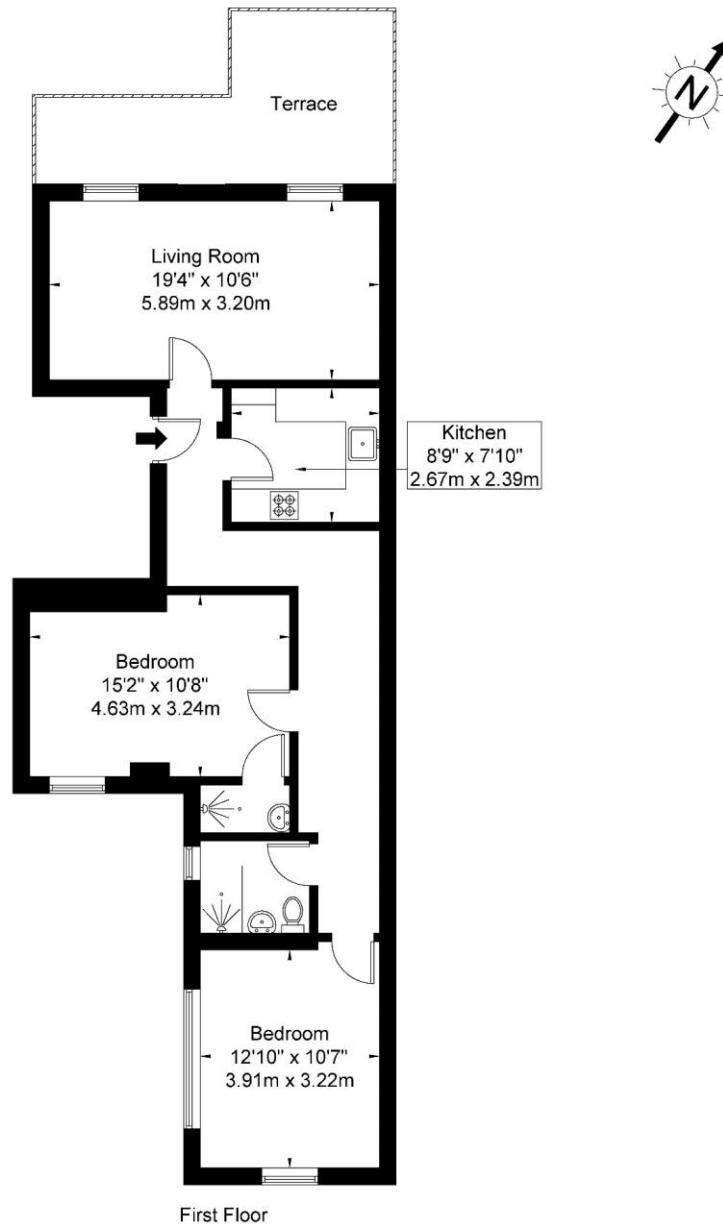
### *Chestertons Little Venice Lettings*

26 Clifton Road  
Maida Vale  
London  
W9 1SX  
littlevenice@chestertons.co.uk  
02072662369  
chestertons.co.uk

Additional tenant charges apply (fees apply to non-AST tenancies only)  
Tenancy Agreement Fee: £300  
References per Tenant/Guarantor: £60  
Inventory check (approx. £100 – £250 inc. VAT)  
chestertons.co.uk/property-to-rent/applicable-fees

# Clifton Gardens W9 1AR

Approx. Gross Internal Area = 76.2 sq m / 820 sq ft



Ref

Copyright **BLEU  
PLAN**

The Floor plan is not to scale and measurements and areas shown are approximate and therefore should be used for illustrative purposes only. The plan has been prepared in accordance with the RICS code of Measuring Practice and whilst we have confidence in the information produced it must not be relied on. If there is any aspect of particular importance, you should carry out or commission your own inspection of the property.

Copyright @ BLEUPLAN

Chesterton Global Ltd trading as Chestertons for themselves and for the vendor of this property whose agents they are, give notice that (i) these particulars do not constitute any part of an offer or contract, (ii) all statements contained within these particulars are made without responsibility on the part of Chestertons or the vendor, (iii) whilst made in good faith, none of the statements contained within these particulars are to be relied upon as a statement or representation of fact, (iv) any intending purchasers must satisfy themselves by inspection or otherwise as to the correctness of each of the statements contained within these particulars, (v) the vendor does not make or give either Chestertons or any person in their employment any authority to make or give representation or warranty whatsoever in relation to this property. Wide angle lenses may be used. ©Copyright Chestertons | Chesterton Global Ltd |

Registered Office 40 Connaught Street, Hyde Park, London W2 2AB Registered Company Number 05334580.



This paper is  
100% recyclable