



Stuart Tower

105 Maida Vale, W9

£2,500 per month
(£576.92 per week)

A beautifully refurbished, bright and modern two bedroom apartment situated in portered block in the heart of Little Venice with a lift.

CHESTERTONS



Stuart Tower
105 Maida Vale, W9

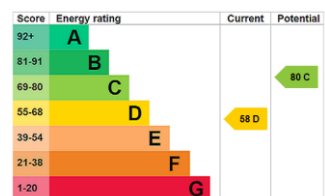


A beautifully refurbished, bright and modern 2 bedroom apartment situated in portered block in the heart of Little Venice with a lift.

This spacious apartment further benefits; concierge, balcony, ample storage and an abundance of natural light.

Stuart Tower is ideally situated moments away from Maida Vale underground station servicing the Bakerloo line and close to local amenities.

Minimum Term: 12 months
Deposit Required: 5 weeks
Local Authority: City of Westminster
Council Tax Band: D
EPC Rating: D
Part Furnished

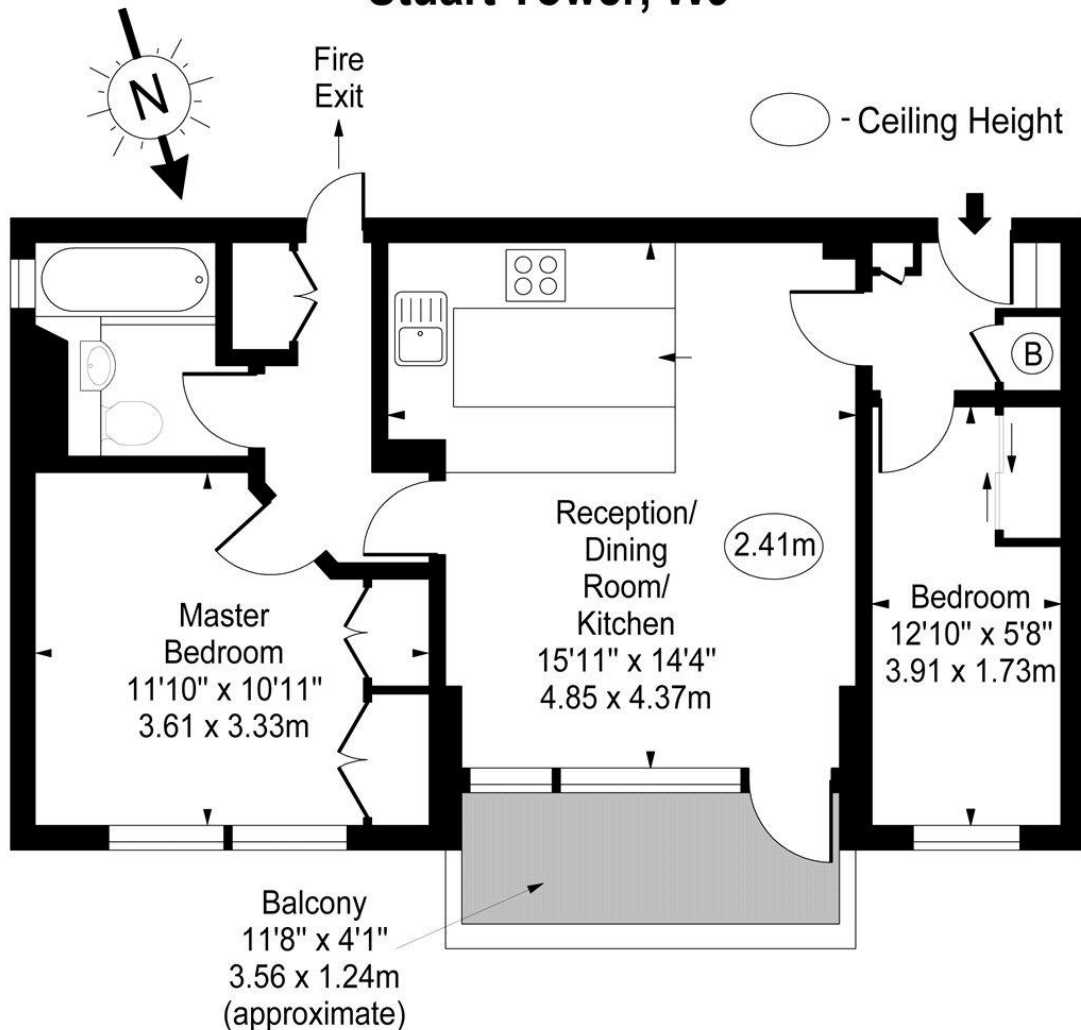


Chestertons Little Venice Lettings

26 Clifton Road
Maida Vale
London
W9 1SX
littlevenicetlettingsusers@chestertons.co.uk
02072662369
chestertons.co.uk

Additional tenant charges apply (fees apply to non-AST tenancies only)
Tenancy Agreement Fee: £300
References per Tenant/Guarantor: £60
Inventory check (approx. £100 – £250 inc. VAT)
chestertons.co.uk/property-to-rent/applicable-fees

Stuart Tower, W9



Thirteenth Floor

Approx Gross Internal Area **530 Sq Ft - 49.24 Sq M**

For Illustration Purposes Only - Not To Scale

www.goldlens.co.uk

Ref. No. 016009M

