



Southwold Mansions

Widley Road, W9

£2,950 per month
(£680.77 per week)

This spacious two double bedroom garden flat is situated within this impressive mansion block with direct access to communal gardens. The property comprises; spacious reception room, bespoke kitchen, two double bedrooms and modern bathroom suite.

CHESTERTONS



Southwold Mansions

Widley Road, W9

- Two bedrooms
- Ground floor
- Unfurnished
- Garden
- EPC C

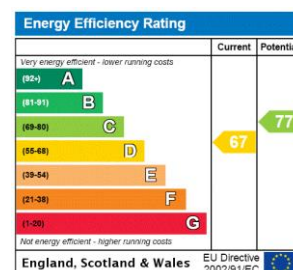


This spacious two double bedroom garden flat is situated within this impressive mansion block with direct access to communal gardens. The property comprises; spacious reception room, separate bespoke kitchen that has just been newly fitted, two double bedrooms and modern bathroom.

This stunning apartment further benefits; high ceilings, ample storage and hard wooden floors. The property is offered unfurnished.

Widley Road is a quiet one way street, ideally located moments from all the amenities of Maida Vale and close to excellent transport links

Minimum Term: 12 months
Deposit Required: 5 weeks
Local Authority: City of Westminster
Council Tax Band: C
EPC Rating: D
Unfurnished



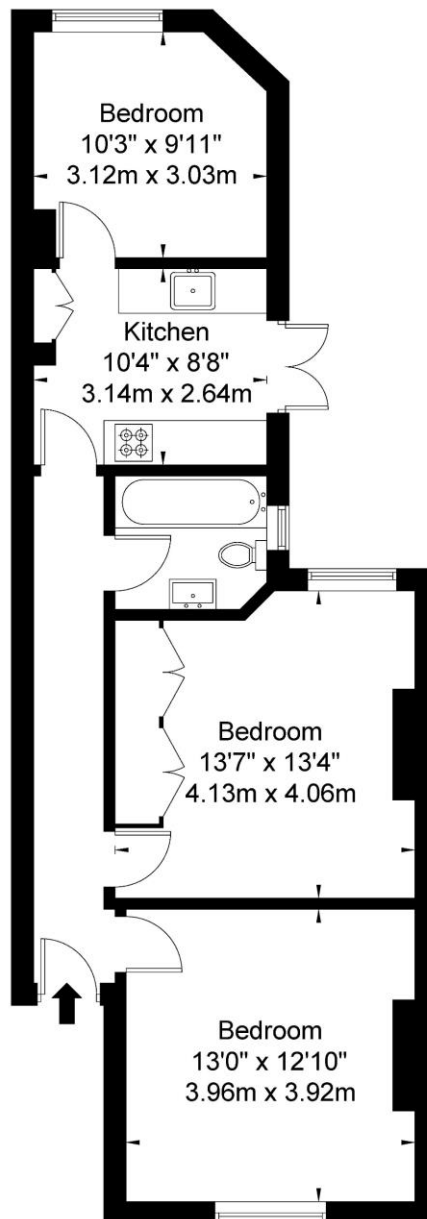
Chestertons Little Venice Lettings

26 Clifton Road
Maida Vale
London
W9 1SX
littlevenicetlettingsusers@chestertons.co.uk
02072662369
chestertons.co.uk

Additional tenant charges apply (fees apply to non-AST tenancies only)
Tenancy Agreement Fee: £300
References per Tenant/Guarantor: £60
Inventory check (approx. £100 – £250 inc. VAT)
chestertons.co.uk/property-to-rent/applicable-fees

Southwold Mansions Widley Road W9 2LE

Approx Gross Internal Area = 62.3 sq m / 670 sq ft



Lower Ground Floor

Ref

Copyright **BLEU
PLAN**

The Floor plan is not to scale and measurements and areas shown are approximate and therefore should be used for illustrative purposes only. The plan has been prepared in accordance with the RICS code of Measuring Practice and whilst we have confidence in the information produced it must not be relied on. If there is any aspect of particular importance, you should carry out or commission your own inspection of the property.

Copyright @ BLEUPLAN

