



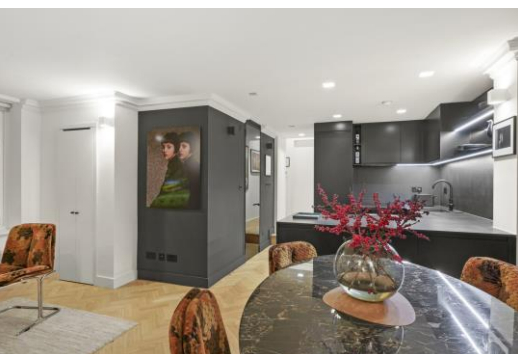
Randolph Avenue

Little Venice, W9

£4,000 per month
(£923.08 per week)

SHORT LET - This well presented one bedroom flat is located on the raised ground floor of a converted house and is moments to Warwick Avenue Station. Comprising : Double bedroom, 2 bathrooms (one en-suite) & open plan reception room & kitchen.

CHESTERTONS



Randolph Avenue

Little Venice, W9

- All bills included
- Period Conversion In Prime Little Venice
- One Double Bedroom, Modern Bathroom & Separate Shower-room
- Open Plan Reception/Kitchen
- Moments From Warwick Avenue Underground



A spacious one bedroom apartment superbly located moments from Regent's Canal, the amenities of Clifton Road, and a couple of minutes from Warwick Avenue underground station.

This well presented one bedroom flat is located on the raised ground floor of a converted house and it comprises a double bedroom, two bathrooms (one en-suite) and an open plan reception room and kitchen.

Randolph Avenue is ideally situated moments away from all the amenities of Little Venice and close to excellent transport links including Warwick Avenue underground station.

Minimum Term: 1 months
Deposit Required: 4 weeks (subject to tenancy length)
Local Authority: Westminster
Council Tax Band: D
EPC Rating: C
Furnished

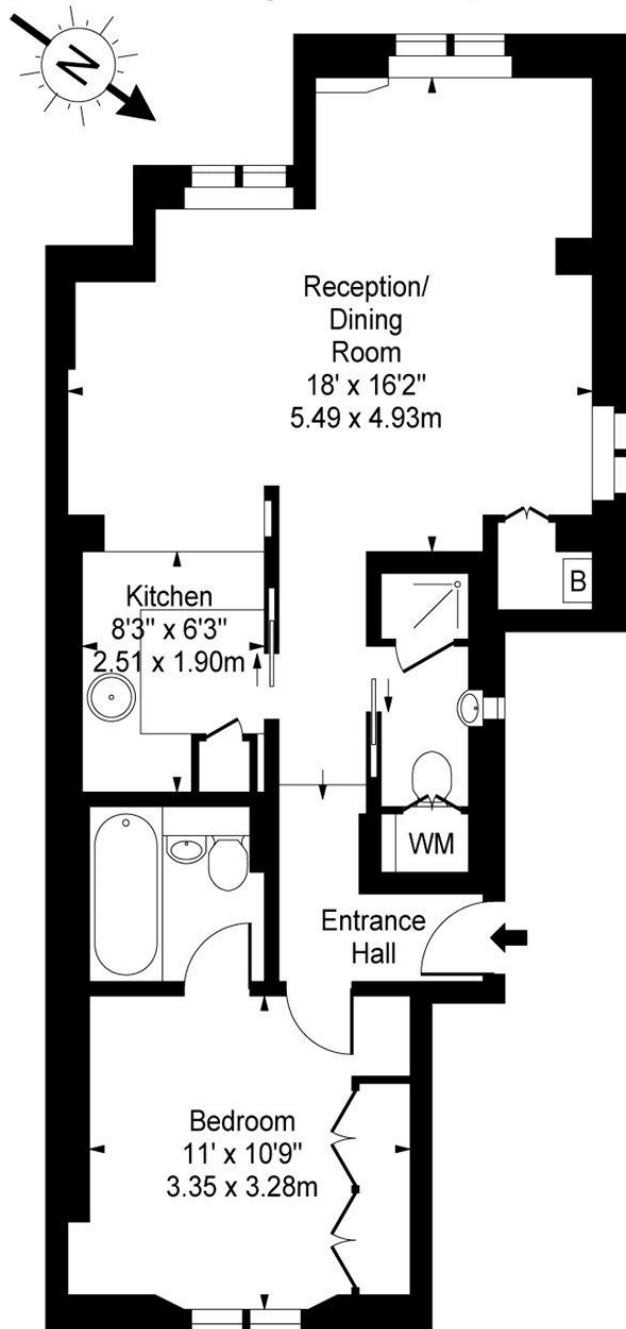
Energy Efficiency Rating		
	Current	Potential
Very energy efficient - lower running costs		
A (92-100)		
B (81-91)		
C (69-80)	77	82
D (55-68)		
E (39-54)		
F (21-38)		
G (1-20)		
Not energy efficient - higher running costs		
England, Scotland & Wales EU Directive 2002/91/EC		

Chestertons Little Venice Lettings

26 Clifton Road
Maida Vale
London
W9 1SX
littlevenicetlettingsusers@chestertons.co.uk
02072662369
chestertons.co.uk

Additional tenant charges apply (fees apply to non-AST tenancies only)
Tenancy Agreement Fee: £300
References per Tenant/Guarantor: £60
Inventory check (approx. £100 – £250 inc. VAT)
chestertons.co.uk/property-to-rent/applicable-fees

Randolph Avenue, W9



Ground Floor

Approx Gross Internal Area **573 Sq Ft - 53.23 Sq M**

For Illustration Purposes Only - Not To Scale

www.goldlens.co.uk

Ref. No. 005893M

