



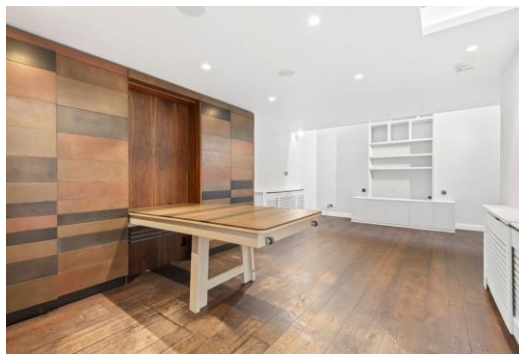
Elnathan Mews

London, W9

£5,000 per month
(£1,153.85 per week)

Recently refurbished 3 double bedroom mews house in this fantastic secluded cobbled street moments from Warwick Avenue Underground Station and the pretty cafes of both Formosa Street & Clifton Road.

CHESTERTONS



Elnathan Mews

London, W9

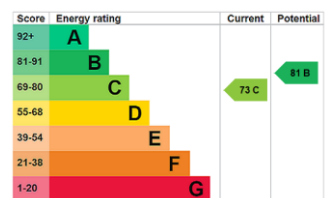
- Mews House
- Popular Location
- Wooden Floors
- Lots of Storage



Recently refurbished 3 double bedroom mews house in this fantastic secluded cobbled street moments from Warwick Avenue Underground Station and the pretty cafes of both Formosa Street & Clifton Road.

Accommodation comprises of: stylish modern kitchen, utility, open plan reception and dining room, guest WC on the ground floor. The first floor offers the master bedroom with walk in wardrobes and a Juliette balcony, a large bathroom with twin sinks and a walk in shower and a study area. The top floor consists of two further double bedrooms and a second large bathroom with twin sinks.

Minimum Term: 12 months
Deposit Required: 6 weeks
Local Authority: City of Westminster
Council Tax Band: G
EPC Rating: To be confirmed
Unfurnished



Chestertons Little Venice Lettings

26 Clifton Road
Maida Vale
London
W9 1SX
littlevenicelettingsusers@chestertons.co.uk
02072662369
chestertons.co.uk

Additional tenant charges apply (fees apply to non-AST tenancies only)
Tenancy Agreement Fee: £300
References per Tenant/Guarantor: £60
Inventory check (approx. £100 – £250 inc. VAT)
chestertons.co.uk/property-to-rent/applicable-fees

Elnathan Mews, W9

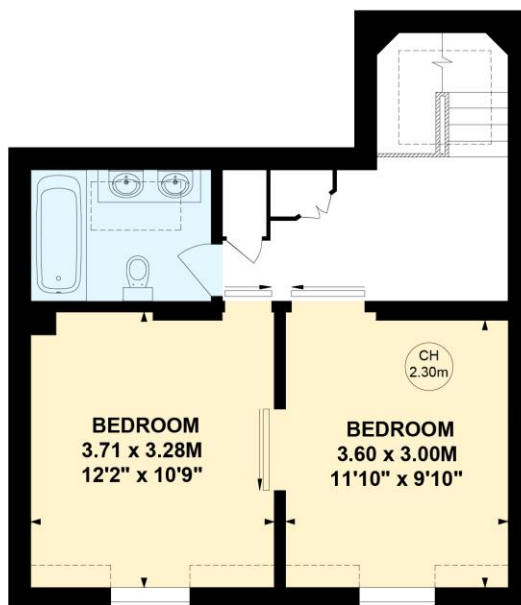
Approximate gross internal area

128.89 sq m / 1387 sq ft

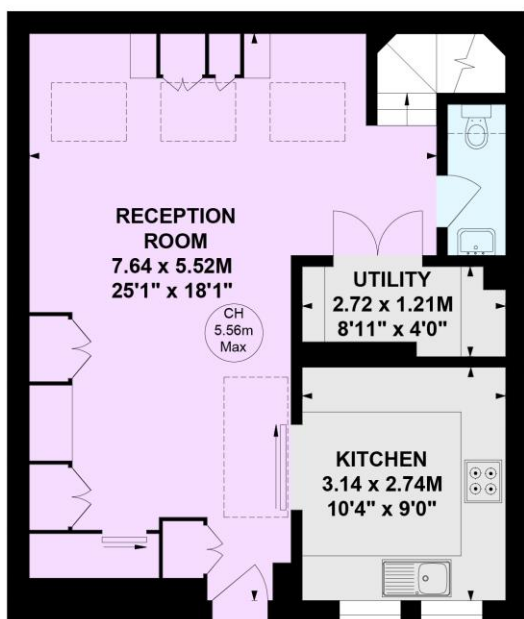
(Excluding Void)

Key :

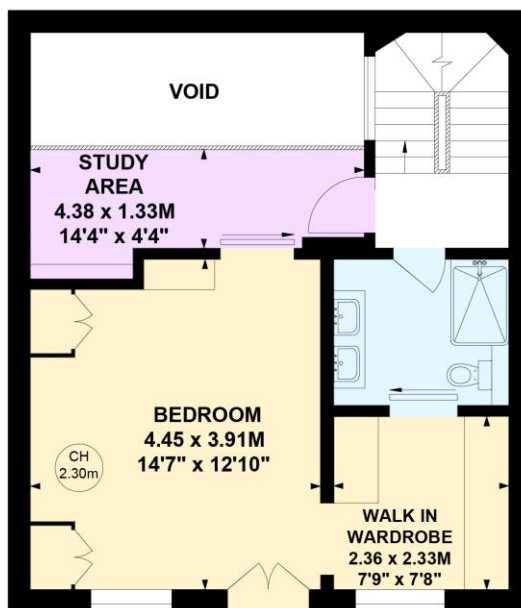
CH - Ceiling Height



Second Floor



Ground Floor



First Floor

This plan is not to scale and must be used as layout guidance only. All measurements and areas are approximate and should not be relied upon to provide accurate information. This plan must not be relied upon when making property valuations, design considerations or any other such relevant decisions. We accept no responsibility or liability (whether in contract, tort or otherwise) in relation to any loss whatsoever arising from or in connection with any use of this plan or the adequacy, accuracy or completeness of it or any information within it.

