



Clifton Gardens

London, W9

£3,750 per month
(£865.38 per week)

A beautiful three bedroom flat in a sought after White stucco set in the heart of Little Venice. Compromising of three double bedrooms, newly renovated bathrooms, open plan reception and balcony to the rear of the property.

CHESTERTONS



Clifton Gardens

London, W9

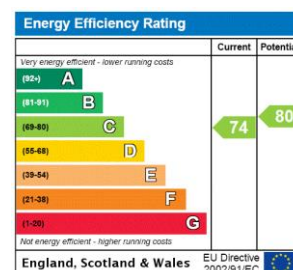
- Sharer Friendly!
- Three bedrooms
- Three bathrooms
- Open plan reception
- Balcony
- 1255 SQFT



A beautiful three bedroom flat in a sought after White stucco set in the heart of Little Venice. Compromising of three double bedrooms, newly renovated bathrooms, open plan reception and balcony to the rear of the property.

Clifton Gardens is ideally situated moments away from all the amenities of Little Venice and close to excellent transport links including Warwick Avenue underground station and the Elizabeth Line from Paddington station.

Minimum Term: 12 months
Deposit Required: 5 weeks
Local Authority: City of Westminster
Council Tax Band: F
EPC Rating: C
Furnished



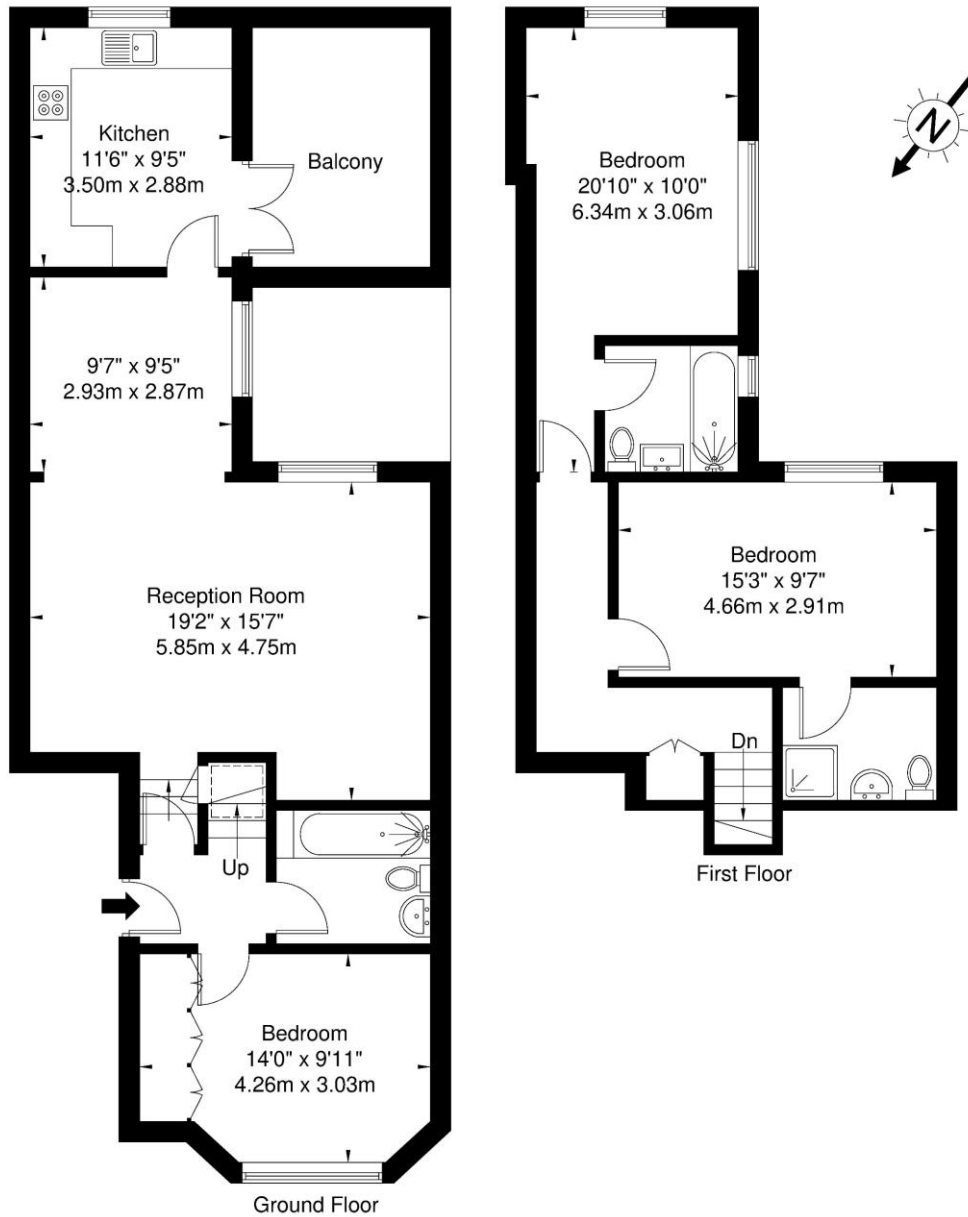
Chestertons Little Venice Lettings

26 Clifton Road
Maida Vale
London
W9 1SX
littlevenicetlettingsusers@chestertons.co.uk
02072662369
chestertons.co.uk

Additional tenant charges apply (fees apply to non-AST tenancies only)
Tenancy Agreement Fee: £300
References per Tenant/Guarantor: £60
Inventory check (approx. £100 – £250 inc. VAT)
chestertons.co.uk/property-to-rent/applicable-fees

Clifton Gardens, W9 1AR, W9 1AR

Approx. Gross Internal Area = 113.8 sq m / 1225 sq ft



Ref

Copyright

**BLEU
PLAN**

The Floor plan is not to scale and measurements and areas shown are approximate and therefore should be used for illustrative purposes only. The plan has been prepared in accordance with the RICS code of Measuring Practice and whilst we have confidence in the information produced it must not be relied on. If there is any aspect of particular importance, you should carry out or commission your own inspection of the property.

Copyright @ BLEUPLAN

