



Clive Court

Maida Vale, W9

£6,000 per month
(£1,384.62 per week)

This striking three double bedroom apartment is situated on the seventh floor (with lift) within this impressive Mansion block.

CHESTERTONS



Clive Court

Maida Vale, W9

- Double Height Ceilings
- Wooden Floors
- Just Repainted Throughout
- Great Storage
- Popular Block
- Balcony



This striking three double bedroom apartment is situated on the seventh floor (with lift) within this impressive Mansion block. The apartment boasts double height ceilings and comprises; spacious reception room, separate kitchen three double bedrooms and two bathrooms.

This stunning apartment further benefits; wooden flooring, spacious accommodation throughout, and has been refurbished to an excellent standard.

Clive Court is situated close to transport, cafes & the canal. With very easy access to Paddington & Central London.

Minimum Term: 12 months
Deposit Required: 6 weeks
Local Authority: City of Westminster
Council Tax Band: G
EPC Rating: To be confirmed
Unfurnished

Chestertons Little Venice Lettings

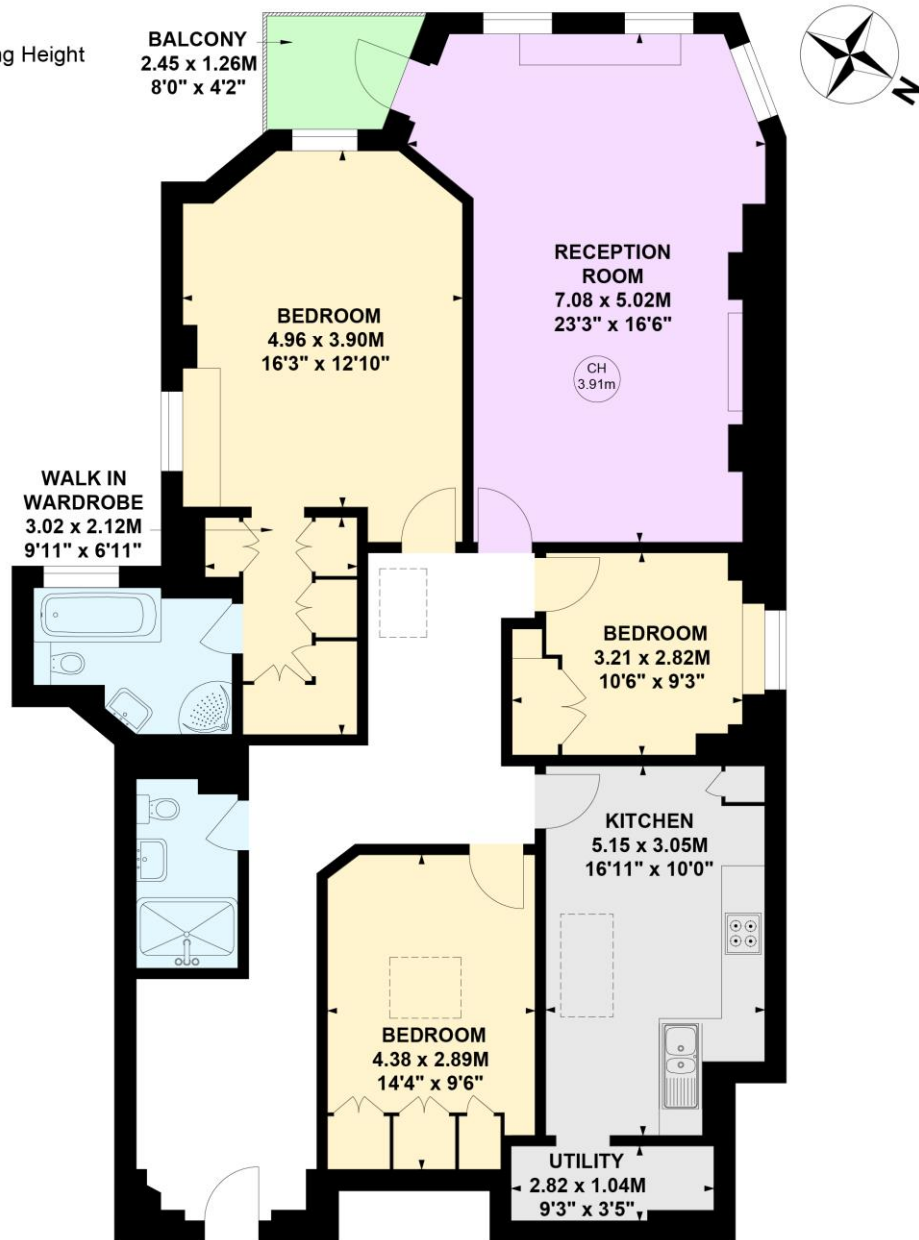
26 Clifton Road
Maida Vale
London
W9 1SX
littlevenicetlettingsusers@chestertons.co.uk
02072662369
chestertons.co.uk

Additional tenant charges apply (fees apply to non-AST tenancies only)
Tenancy Agreement Fee: £300
References per Tenant/Guarantor: £60
Inventory check (approx. £100 – £250 inc. VAT)
chestertons.co.uk/property-to-rent/applicable-fees

Maida Vale, W9

Approximate gross internal area
131.90 sq m / 1420 sq ft

Key :
CH - Ceiling Height



Seventh Floor

This plan is not to scale and must be used as layout guidance only. All measurements and areas are approximate and should not be relied upon to provide accurate information. This plan must not be relied upon when making property valuations, design considerations or any other such relevant decisions. We accept no responsibility or liability (whether in contract, tort or otherwise) in relation to any loss whatsoever arising from or in connection with any use of this plan or the adequacy, accuracy or completeness of it or any information within it.

