



# Robert Close

London, W9

£7,900 per month  
(£1,823.08 per week)

This stunning four double bedroom Mews house is set within this impressive gated development. The property comprises; spacious open plan reception room, four double bedrooms and four bathrooms.

**CHESTERTONS**





# Robert Close

## London, W9

- Great storage
- Pets allowed
- Wooden floors
- Gated development

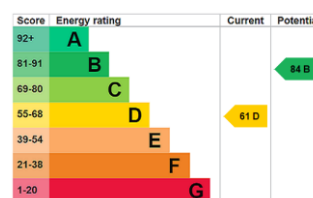


This stunning four double bedroom Mews house is set within this impressive gated development. The property comprises; spacious open plan reception room, four double bedrooms and four bathrooms.

This impressive house further benefits; wooden flooring, modern kitchen, spacious accommodation throughout and has a large room on the ground floor that can be used as a study or playroom. The property is offered unfurnished.

Robert Close is ideally situated moments from all the amenities of Little Venice and close to excellent transport links including Warwick

**Minimum Term:** 12 months  
**Deposit Required:** 6 weeks  
**Local Authority:** City of Westminster  
**Council Tax Band:** H  
**EPC Rating:** D  
**Unfurnished**



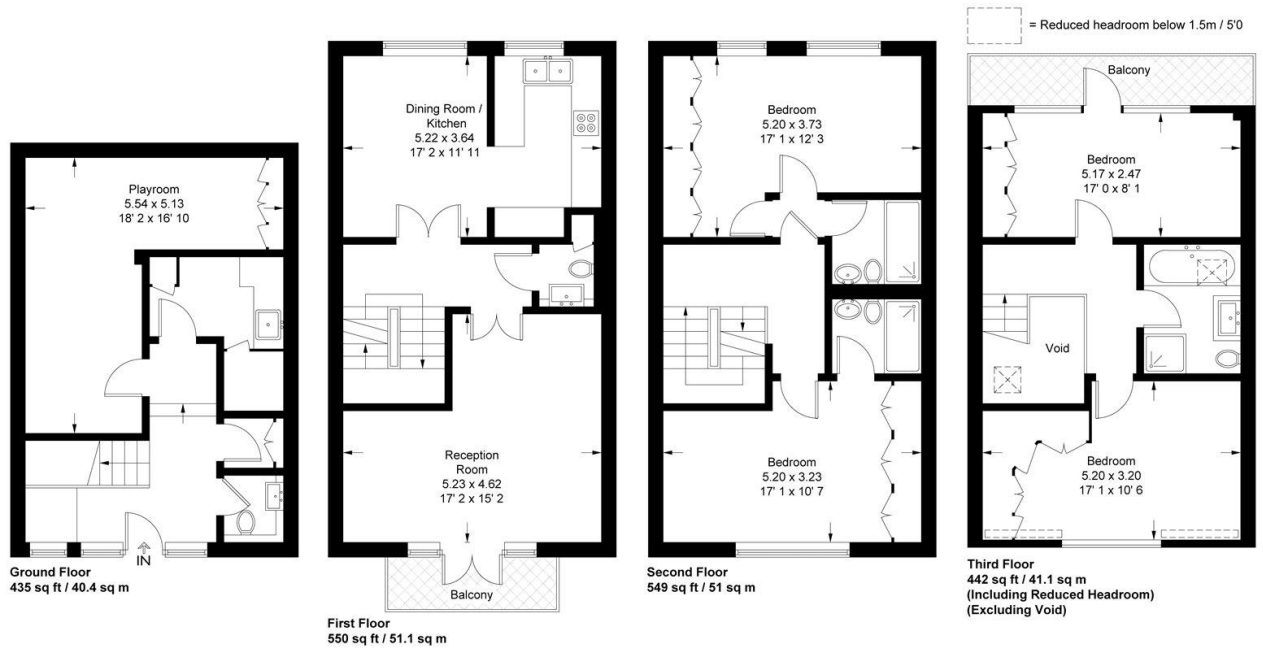
### *Chestertons Little Venice Lettings*

26 Clifton Road  
Maida Vale  
London  
W9 1SX  
littlevenicelettingsusers@chestertons.co.uk  
02072662369  
chestertons.co.uk

Additional tenant charges apply (fees apply to non-AST tenancies only)  
Tenancy Agreement Fee: £300  
References per Tenant/Guarantor: £60  
Inventory check (approx. £100 – £250 inc. VAT)  
chestertons.co.uk/property-to-rent/applicable-fees

## Robert Close

Approximate Gross Internal Area = 1971 sq ft / 183.1 sq m  
(Excluding Reduced Headroom / Void)  
Reduced Headroom = 5 sq ft / 0.5 sq m  
Total = 1976 sq ft / 183.6 sq m



Not to scale, for guidance only and must not be relied upon as a statement of fact  
All measurements and areas are approximate only and have been prepared in  
accordance with the current edition of the RICS Code of Measuring Practice

