



Warwick Avenue

Little Venice, W9

£7,583 per month
(£1,749.92 per week)

A delightful three bedroom flat in the heart of Little Venice. Meticulously refurbished throughout with no expense spared, the flat offers excellent entertaining space, spacious bedrooms & luxury bathrooms. EPC rating E

CHESTERTONS



Warwick Avenue

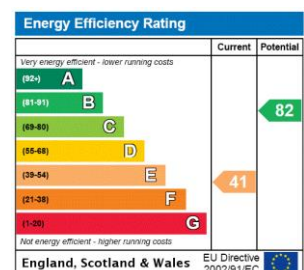
Little Venice, W9

- Stunning Victorian Conversion
- Three Double Bedrooms With Ample Storage Space & Two Modern Bathrooms
- Reception Room, Dining Room & Contemporary Kitchen
- Moments To Warwick Avenue Station
- EPC Rating E



A delightful three bedroom flat in the heart of Little Venice. Meticulously refurbished throughout with no expense spared, the flat has it's own front door and comprises of a spacious, bright entrance hall, dining room, reception room, separate integrated kitchen, master bedroom with stylish en-suite, two further double bedrooms with built in wardrobes, further shower room and additional WC. EPC rating E.

Minimum Term: 12 months
Deposit Required: 6 weeks
Local Authority: City of Westminster
Council Tax Band: G
EPC Rating: E
Furnished

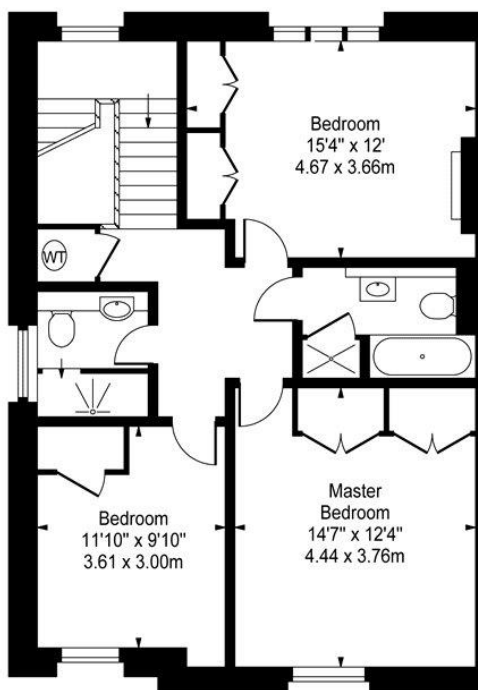


Chestertons Little Venice Lettings

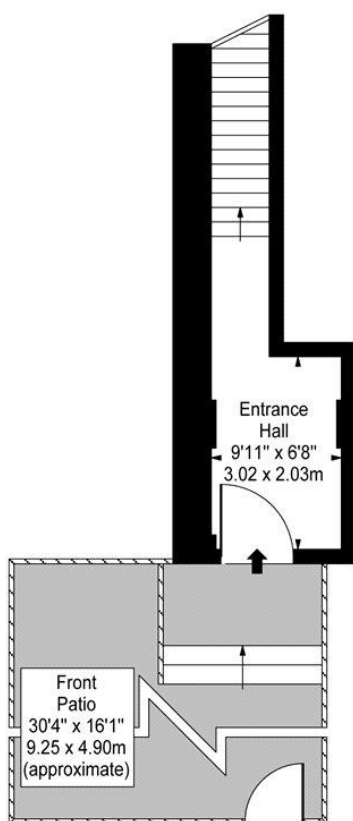
26 Clifton Road
Maida Vale
London
W9 1SX
littlevenicetlettingsusers@chestertons.co.uk
02072662369
chestertons.co.uk

Additional tenant charges apply (fees apply to non-AST tenancies only)
Tenancy Agreement Fee: £300
References per Tenant/Guarantor: £60
Inventory check (approx. £100 – £250 inc. VAT)
chestertons.co.uk/property-to-rent/applicable-fees

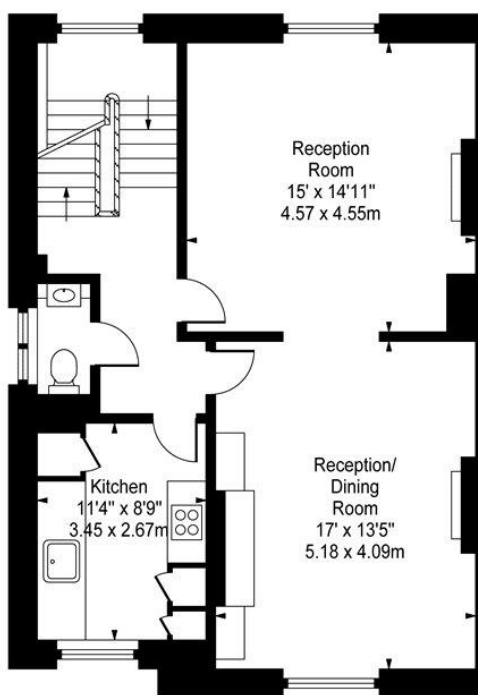
Warwick Avenue, W9



Second Floor



Ground Floor
Entrance



First Floor

Approx Gross Internal Area 1580 Sq Ft - 146.78 Sq M

For Illustration Purposes Only - Not To Scale

www.goldlens.co.uk

Ref. No. 006669K

