



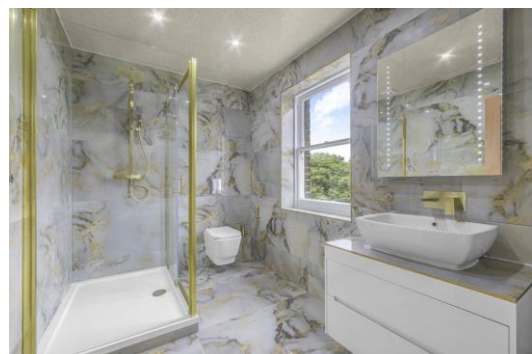
Mowbray Road

London, NW6

£5,000 per month
(£1,153.85 per week)

A spacious three bedroom maisonette occupying the top two floors of an imposing period conversion.

CHESTERTONS



Mowbray Road

London, NW6

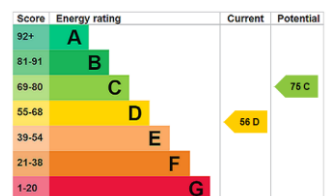
- Three bedroom
- Three bathroom
- Recently refurbished
- Balcony
- Period conversion



A beautiful three bedroom apartment arranged over the top two floors of an impressive period conversion. Spanning over 1,400 sq ft, the property boasts a spacious open-plan kitchen and living area, complete with modern appliances and abundance of natural light.

The property further benefits from being refurbished to a high standard with all detail considered. The apartment features three generously sized bedrooms, two of which benefit from en-suite bathrooms. One bedroom also has direct access to a private roof terrace offering tree lined views.

Minimum Term: 12 months
Deposit Required: 6 weeks
Local Authority: Brent
Council Tax Band: E
EPC Rating: D
Unfurnished

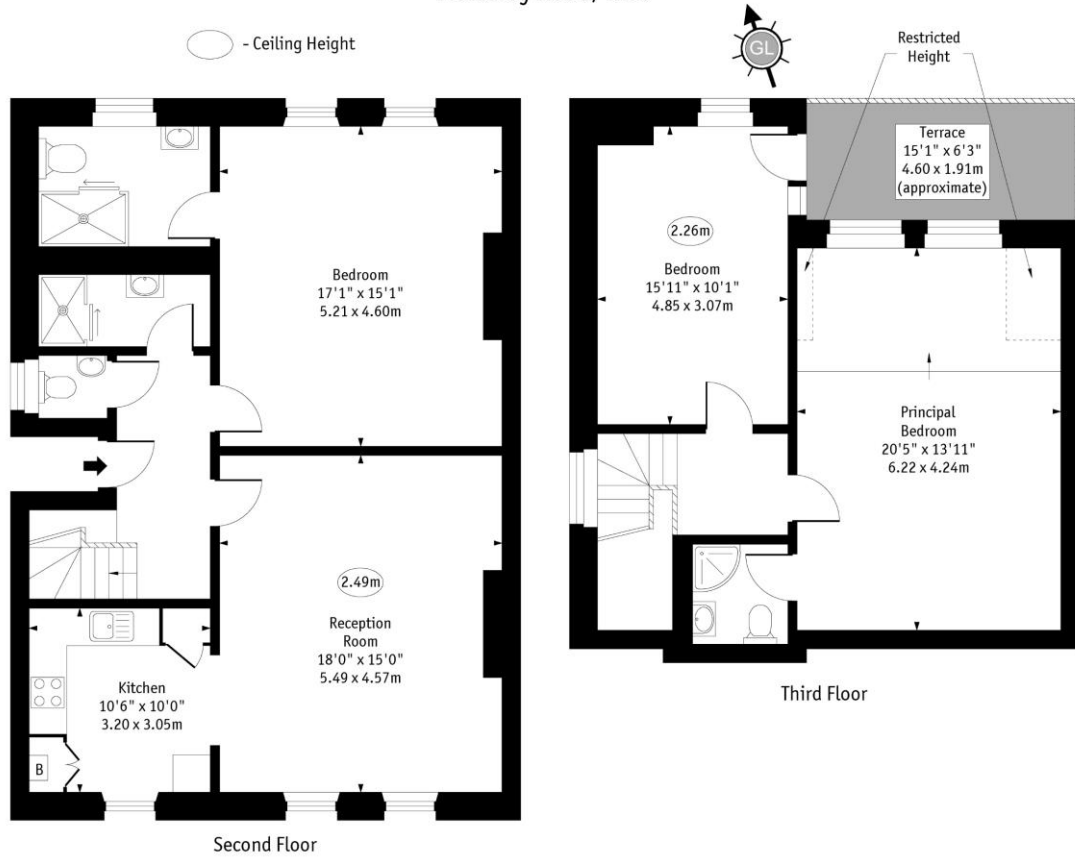


Chestertons Little Venice Lettings

26 Clifton Road
Maida Vale
London
W9 1SX
littlevenicelettingsusers@chestertons.co.uk
02072662369
chestertons.co.uk

Additional tenant charges apply (fees apply to non-AST tenancies only)
Tenancy Agreement Fee: £300
References per Tenant/Guarantor: £60
Inventory check (approx. £100 – £250 inc. VAT)
chestertons.co.uk/property-to-rent/applicable-fees

Mowbray Road, NW6



Approx Gross Internal Area 1422 Sq Ft - 132.10 Sq M

Approx. Floor Area Including Restricted Heights 1440 Sq Ft - 133.78 Sq M

Every attempt has been made to ensure the accuracy of the floor plan shown.
However, all measurements, fixtures, fittings, and data shown are approximate interpretations and
for illustrative purposes only.

Measured according to the RICS IPMS 2. Not To Scale.

www.goldlens.co.uk
Ref. No. 028014.1KH

