



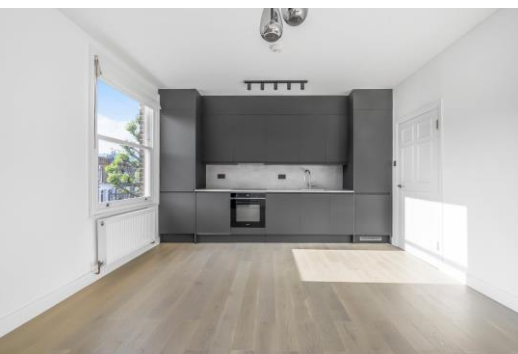
Portnall Road

Maida Hill, W9

£2,275 per month
(£525 per week)

Occupying the first floor of a charming Victorian conversion and offering over 600 sqft of living space, this beautifully refurbished property has been finished to a high standard throughout.

CHESTERTONS



Portnall Road

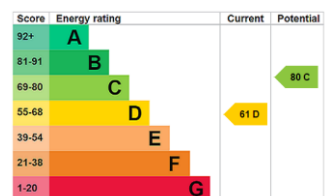
Maida Hill, W9

- Victorian Conversion
- Over 600sqft
- Recently refurbished
- 2 bedrooms



Occupying the first floor of a charming Victorian conversion and offering over 600 sqft of living space, this beautifully refurbished property has been finished to a high standard throughout. The property features a bright and spacious open-plan kitchen and living area, flooded with natural light. The master bedroom includes built-in storage, there is also a second, smaller bedroom making a perfect office or nursery.

Minimum Term: 12 months
Deposit Required: 5 weeks
Local Authority: City of Westminster
Council Tax Band: D
EPC Rating: D
Furnished



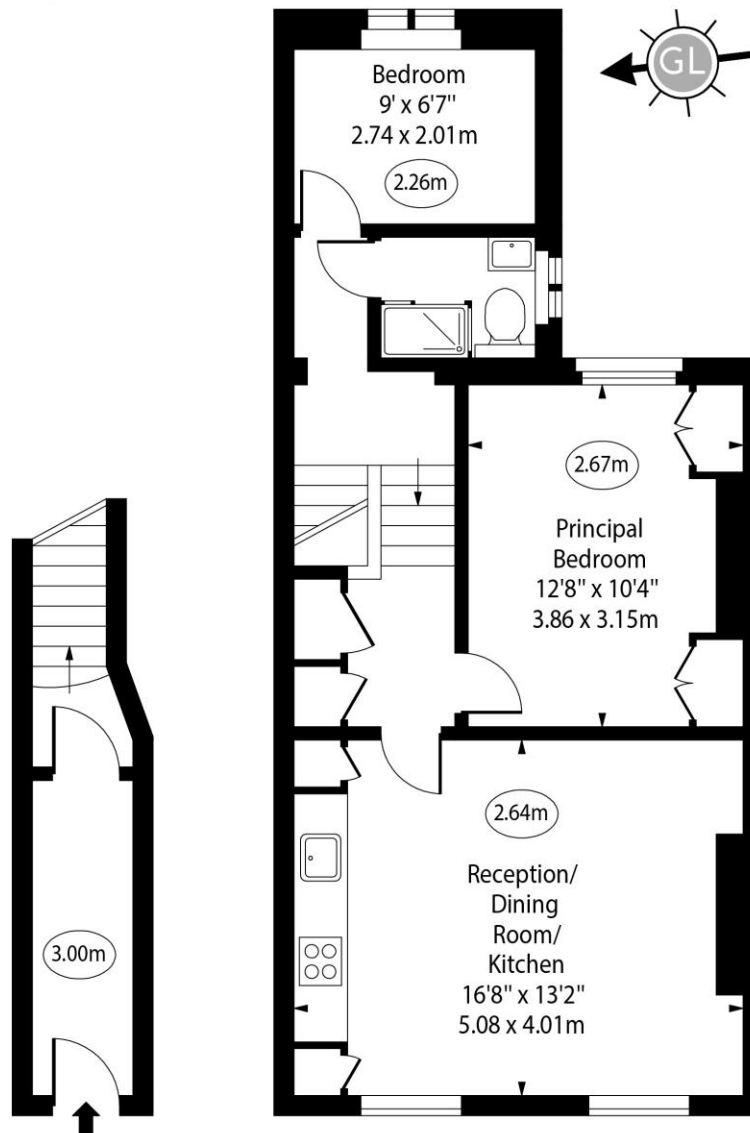
Chestertons Little Venice Sales

26 Clifton Road
Maida Vale
London
W9 1SX
littlevenice@chestertons.co.uk
020 7286 4632
chestertons.co.uk

Additional tenant charges apply (fees apply to non-AST tenancies only)
Tenancy Agreement Fee: £300
References per Tenant/Guarantor: £60
Inventory check (approx. £100 – £250 inc. VAT)
chestertons.co.uk/property-to-rent/applicable-fees

Portnall Road,
Maida Hill, W9

○ - Ceiling Height



Raised Ground Floor

First Floor

Approx Gross Internal Area

630 Sq Ft - 58.53 Sq M

Every attempt has been made to ensure the accuracy of the floor plan shown. However, all measurements, fixtures, fittings, and data shown are approximate interpretations and for illustrative purposes only.

Measured according to the RICS IPMS 2. Not To Scale.

www.goldlens.co.uk

Ref. No. 027948M

