



Clifton Gardens

London, W9

£2,250 per month
(£519.23 per week)

A duplex two bedroom apartment set on the top floor within this stunning Stucco fronted building in the heart of Little Venice. The property comprises; spacious open plan reception room, two bedrooms and one bathroom.

CHESTERTONS



Clifton Gardens

London, W9

- Two bedrooms
- One bathroom
- Period conversion
- Open plan reception room
- Perfectly situated
- Lift

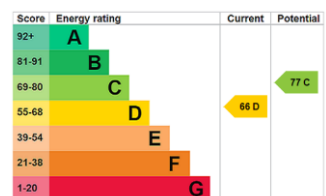


A duplex two bedroom apartment set on the top floor within this stunning Stucco fronted building (with lift) in the heart of Little Venice. The property comprises; spacious open plan reception room, one double bedroom, one single bedroom and one bathroom.

This property further benefits; wooden flooring in the reception room, modern kitchen, one bathroom, spacious accommodation and an abundance of natural light.

Clifton Gardens is ideally situated moments away from all the amenities of Little Venice and close to excellent transport links including Warwick Avenue underground station.

Minimum Term: 12 months
Deposit Required: £2,596.15
Local Authority: City of Westminster
Council Tax Band: E
EPC Rating: D
Furnished



Chestertons Little Venice Lettings

26 Clifton Road
Maida Vale
London
W9 1SX
littlevenicetlettingsusers@chestertons.co.uk
02072662369
chestertons.co.uk

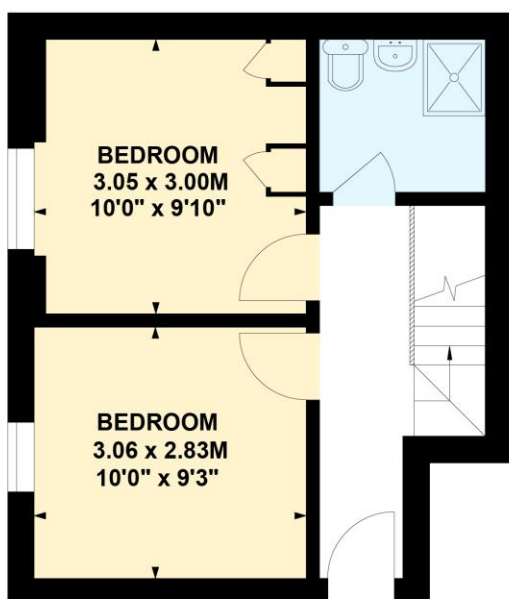
Additional tenant charges apply (fees apply to non-AST tenancies only)
Tenancy Agreement Fee: £300
References per Tenant/Guarantor: £60
Inventory check (approx. £100 – £250 inc. VAT)
chestertons.co.uk/property-to-rent/applicable-fees

Clifton Gardens, W9

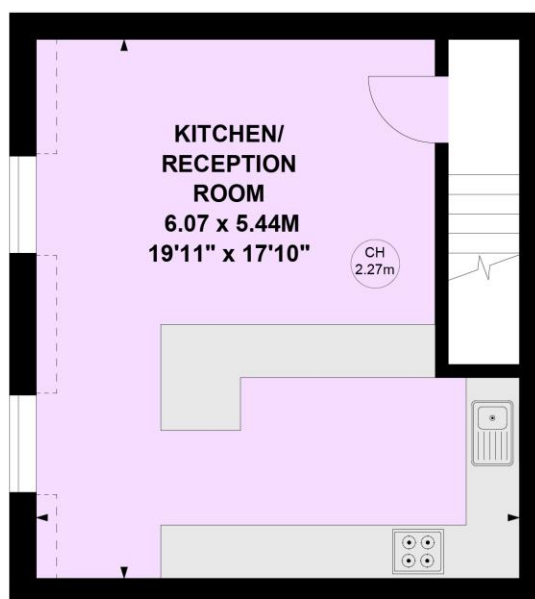
Approximate gross internal area

62.10 sq m / 668 sq ft

Key :
CH - Ceiling Height



Third Floor



Fourth Floor

This plan is not to scale and must be used as layout guidance only. All measurements and areas are approximate and should not be relied upon to provide accurate information. This plan must not be relied upon when making property valuations, design considerations or any other such relevant decisions. We accept no responsibility or liability (whether in contract, tort or otherwise) in relation to any loss whatsoever arising from or in connection with any use of this plan or the adequacy, accuracy or completeness of it or any information within it.

