



# Randolph Crescent

London, W9

£7,000 per month  
(£1,615.38 per week)

A beautifully presented three bedroom lateral apartment located in one of Little Venice's prime tree lined Crescents. In addition to a huge open plan reception/dining room/kitchen there are 2 full bathrooms.

CHESTERTONS





# Randolph Crescent

## London, W9

- Beautiful Lateral Period Conversion
- 3 Bedrooms (Master with En-Suite)
- Views & Access To Beautiful Gardens
- Sought After Crescent moments to Canal & Underground
- EPC Rating C





A beautifully presented 3 bedroom apartment located in one of Little Venice's prime tree lined Crescents. Light filled and contemporary, the property comprises: spacious open plan reception/dining room/kitchen with large sash windows to the rear (overlooking the gardens), 3 double bedrooms (one with en-suite bathroom) a further family bathroom.

The property benefits from a vast amount of storage and lots of original features. Randolph Crescent is just moments from the canal, the cafes of Clifton Road and Warwick Avenue Underground Station. Offered unfurnished.

**Minimum Term:** 12 months  
**Deposit Required:** 6 weeks  
**Local Authority:** Westminster City Council  
**Council Tax Band:** G  
**EPC Rating:** C  
**Unfurnished**

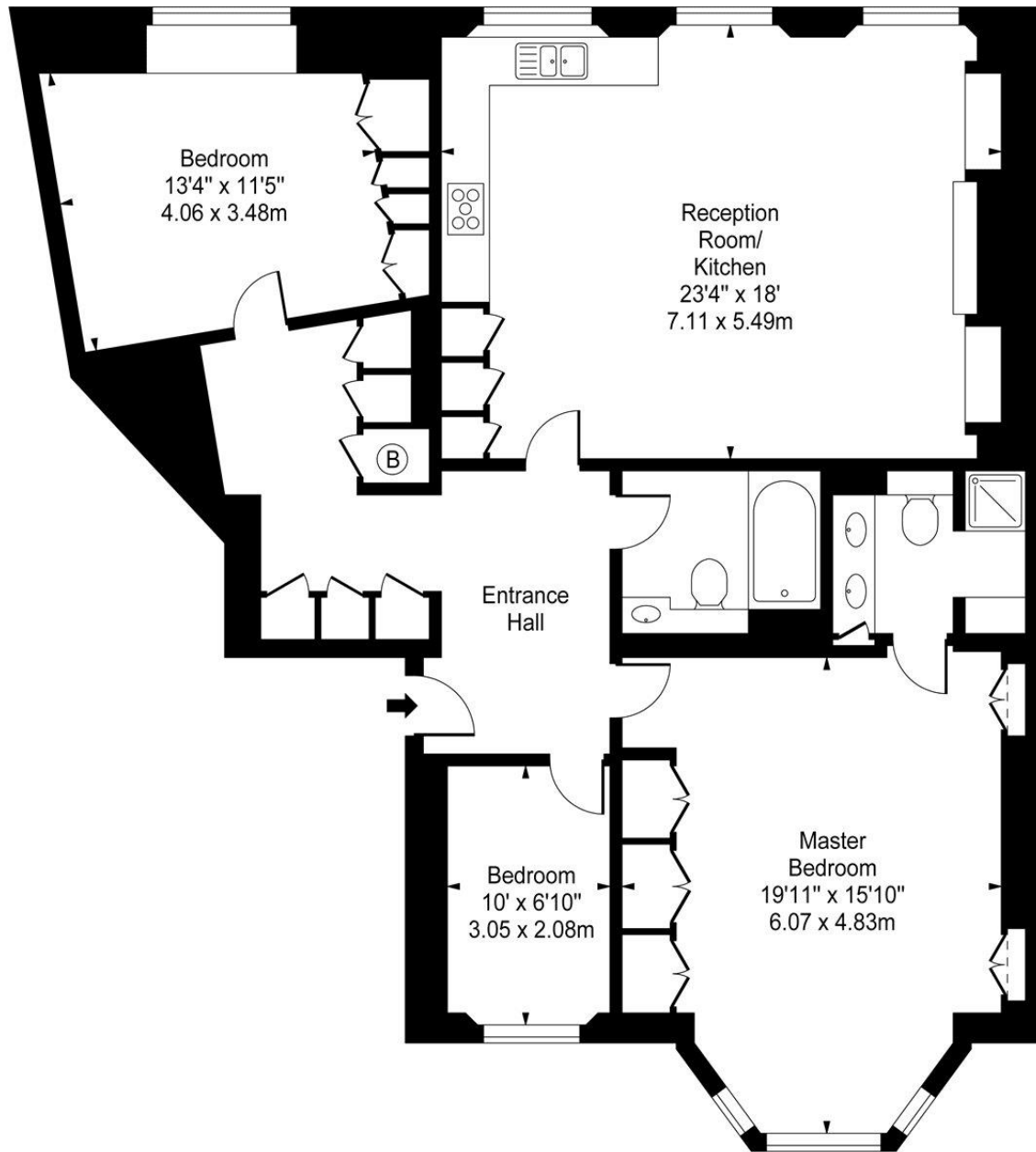
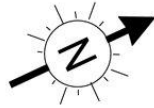
Energy Efficiency Rating		
	Current	Potential
Very energy efficient - lower running costs		
A (94-100)		
B (81-93)		
C (69-80)		
D (55-68)	64	80
E (39-54)		
F (21-38)		
G (1-20)		
Not energy efficient - higher running costs		
England, Scotland & Wales EU Directive 2002/91/EC		

### *Chestertons Little Venice Lettings*

26 Clifton Road  
 Maida Vale  
 London  
 W9 1SX  
[littlevenicetlettingsusers@chestertons.co.uk](mailto:littlevenicetlettingsusers@chestertons.co.uk)  
 02072662369  
[chestertons.co.uk](http://chestertons.co.uk)

Additional tenant charges apply (fees apply to non-AST tenancies only)  
 Tenancy Agreement Fee: £300  
 References per Tenant/Guarantor: £60  
 Inventory check (approx. £100 – £250 inc. VAT)  
[chestertons.co.uk/property-to-rent/applicable-fees](http://chestertons.co.uk/property-to-rent/applicable-fees)

## Randolph Crescent, W9



First Floor

Approx Gross Internal Area **1298 Sq Ft - 120.58 Sq M**

For Illustration Purposes Only - Not To Scale

[www.goldlens.co.uk](http://www.goldlens.co.uk)

Ref. No. 008816J

