



Blomfield Road

London, W9

£2,350 per month
(£542.31 per week)

An attractive and well presented very spacious one bedroom apartment on the first floor of a delightful period building. The property comprises; spacious reception room, brand new separate kitchen, large master bedroom and three piece bathroom suite.

CHESTERTONS



Blomfield Road

London, W9

- Gorgeous one bedroom apartment
- Communal garden access
- Brand new kitchen
- High ceilings
- Great location

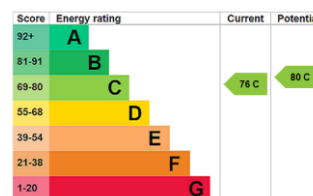


An attractive and well presented very spacious one bedroom apartment on the first floor of a delightful period building. The property comprises; spacious reception room, brand new separate kitchen, large master bedroom and three piece bathroom suite.

This stunning apartment further benefits high ceilings and spacious accommodation throughout with an abundance of natural light.

Blomfield Road is situated directly on the canal close to all amenities of Little Venice and moments from Warwick Avenue underground station.

Minimum Term: 12 months
Deposit Required: 5 weeks
Local Authority: City of Westminster
Council Tax Band: D
EPC Rating: C
Part Furnished



Chestertons Little Venice Lettings

26 Clifton Road
Maida Vale
London
W9 1SX
littlevenicetlettingsusers@chestertons.co.uk
02072662369
chestertons.co.uk

Additional tenant charges apply (fees apply to non-AST tenancies only)
Tenancy Agreement Fee: £300
References per Tenant/Guarantor: £60
Inventory check (approx. £100 – £250 inc. VAT)
chestertons.co.uk/property-to-rent/applicable-fees

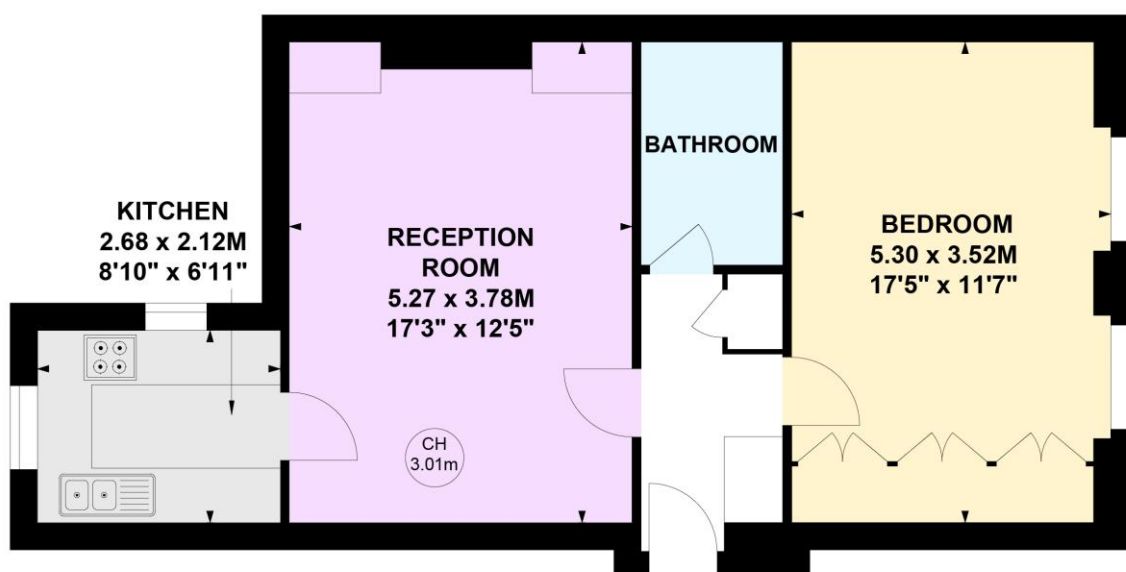
Blomfield Road, W9

Approximate gross internal area

54.41 sq m / 586 sq ft

Key :

CH - Ceiling Height



First Floor

This plan is not to scale and must be used as layout guidance only. All measurements and areas are approximate and should not be relied upon to provide accurate information. This plan must not be relied upon when making property valuations, design considerations or any other such relevant decisions. We accept no responsibility or liability (whether in contract, tort or otherwise) in relation to any loss whatsoever arising from or in connection with any use of this plan or the adequacy, accuracy or completeness of it or any information within it.

