



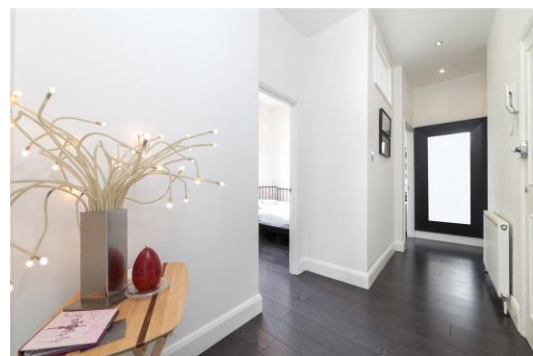
Warrington Crescent

London, W9

£3,250 per month
(£750 per week)

This spacious three bedroom apartment is situated on the second floor within this stunning stucco fronted house in the heart of Little Venice. The property comprises; large reception room, eat-in kitchen, three bedrooms and two bathrooms.

CHESTERTONS



Warrington Crescent

London, W9

- Three bedroom
- Two bathrooms
- Unfurnished
- Wooden floors
- 806 SQFT
- EPC D

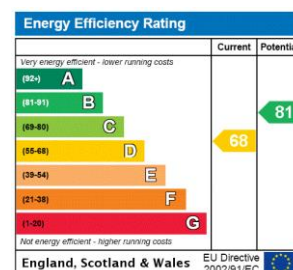


This spacious three bedroom apartment is situated on the second floor within this stunning stucco fronted house in the heart of Little Venice. The property comprises; large reception room, eat-in kitchen, three bedrooms and two bathrooms.

The property has been recently refurbished and further benefits; impressive views, stunning communal gardens and spacious accommodation throughout.

Warrington Crescent is situated moments from Warwick Avenue underground station and close to all the amenities of Formosa Street and Little Venice.

Minimum Term: 12 months
Deposit Required: 5 weeks
Local Authority: City Of Westminster
Council Tax Band: F
EPC Rating: D
Unfurnished

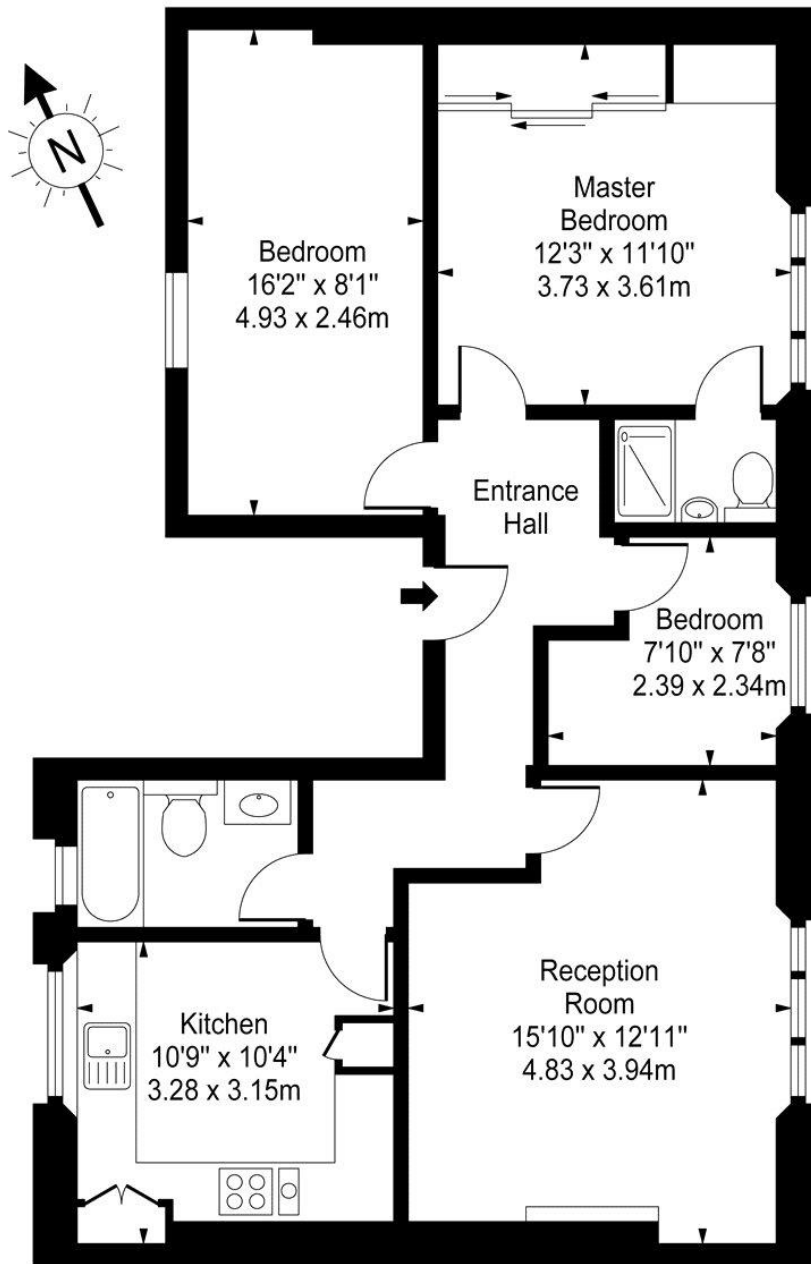


Chestertons Little Venice Lettings

26 Clifton Road
Maida Vale
London
W9 1SX
littlevenicetlettingsusers@chestertons.co.uk
02072662369
chestertons.co.uk

Additional tenant charges apply (fees apply to non-AST tenancies only)
Tenancy Agreement Fee: £300
References per Tenant/Guarantor: £60
Inventory check (approx. £100 – £250 inc. VAT)
chestertons.co.uk/property-to-rent/applicable-fees

Warrington Crescent, W9



Second Floor

Approx Gross Internal Area **806 Sq Ft - 74.88 Sq M**

For Illustration Purposes Only - Not To Scale

www.goldlens.co.uk

Ref. No. 002183

