



Warwick Avenue

Little Venice, W9

£2,350 per month
(£542.31 per week)

This stunning one double bedroom apartment is situated on the raised ground floor within this impressive period conversion. The property comprises; open plan reception room, master bedroom and three piece bathroom suite.



Warwick Avenue

Little Venice, W9

- Smart Raised Ground Floor Conversion
- 1 Bedroom & Study
- Modern Kitchen
- Moments To Warwick Avenue

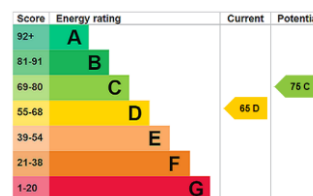


This stunning one double bedroom apartment is situated on the raised ground floor within this impressive period conversion. The property comprises; open plan reception room, master bedroom, an additional study and three piece bathroom suite.

This stunning apartment further benefits; wooden flooring, high ceilings, period features including original coving and wooden shutters and a separate office/store room. The property is offered furnished.

Warwick Avenue is ideally situated moments away from local amenities and close to excellent transport links into the City.

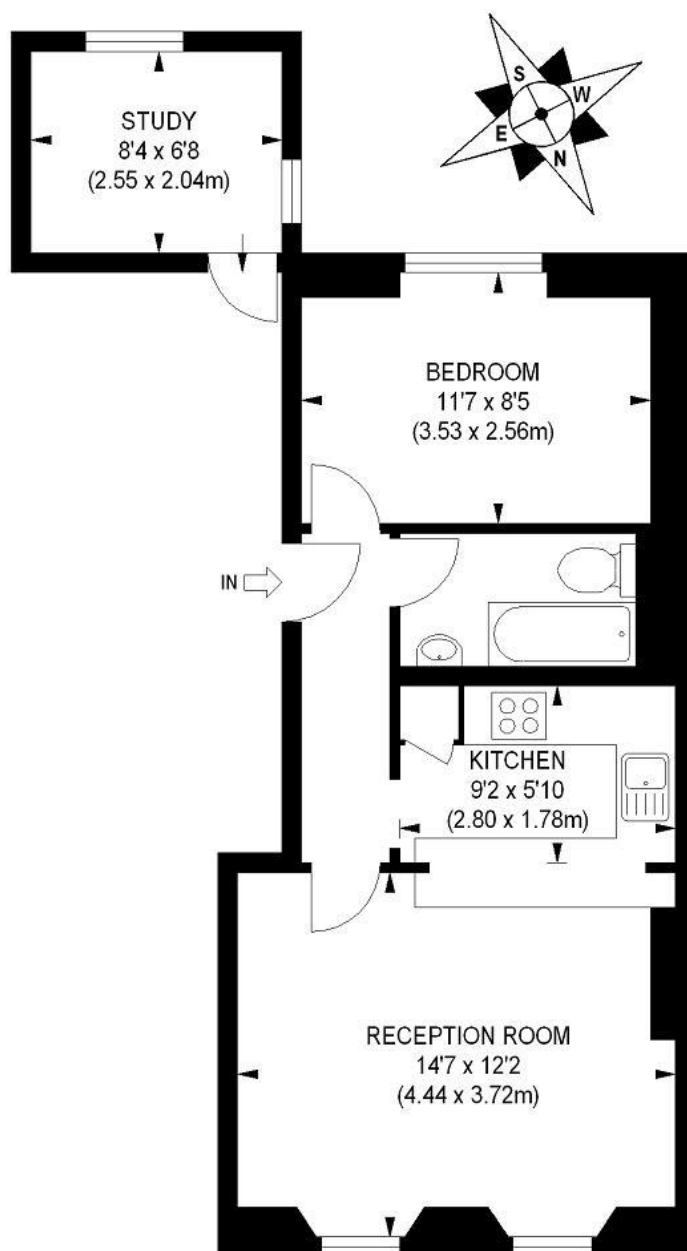
Minimum Term: 12 months
Deposit Required: 5 weeks
Local Authority: Westminster City Council
Council Tax Band: D
EPC Rating: D
Furnished



Chestertons Little Venice Lettings

26 Clifton Road
Maida Vale
London
W9 1SX
littlevenicelettingsusers@chestertons.co.uk
02072662369
chestertons.co.uk

Additional tenant charges apply (fees apply to non-AST tenancies only)
Tenancy Agreement Fee: £300
References per Tenant/Guarantor: £60
Inventory check (approx. £100 – £250 inc. VAT)
chestertons.co.uk/property-to-rent/applicable-fees



RAISED GROUND FLOOR

APPROX. GROSS INTERNAL FLOOR AREA 456 SQ FT / 42 SQ M

Illustration for identification purposes only, not to scale

All measurements are maximum, and includes wardrobes and window bays where applicable

Prepared by Pixangle © . Tel 020 8870 2118

