



# Morshead Road

London, W9

£4,500 per month  
(£1,038.46 per week)

A wonderfully bright flat situated on the 5th floor (with lift), a short walk from Warwick Avenue underground. Comprising of large reception room, 3 double bedrooms, 2 bathrooms, modern kitchen, balcony, communal terrace & off-street parking. EPC B

CHESTERTONS





# Morshead Road

London, W9

- Beautifully Light Apartment With Lift
- Three Spacious Bedrooms & Two Bathrooms
- Large Reception, Separate Kitchen & Off Street Parking
- Close To Warwick Avenue Station
- EPC Rating B

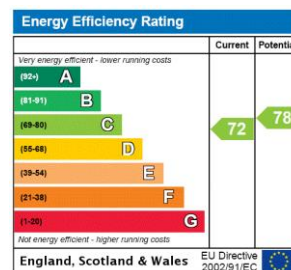


A wonderfully bright flat situated on the 5th floor (with lift) in central Maida Vale, a short walk from Warwick Avenue underground and the shops and cafe's the area has to offer.

Comprising of a large reception room with multiple windows and masses of light, three double bedrooms, two modern bathrooms, contemporary kitchen, balcony, communal terrace and off-street parking.

EPC Rating B.

**Minimum Term:** 12 months  
**Deposit Required:** 6 weeks  
**Local Authority:** City of Westminster  
**Council Tax Band:** H  
**EPC Rating:** E  
**Furnished**

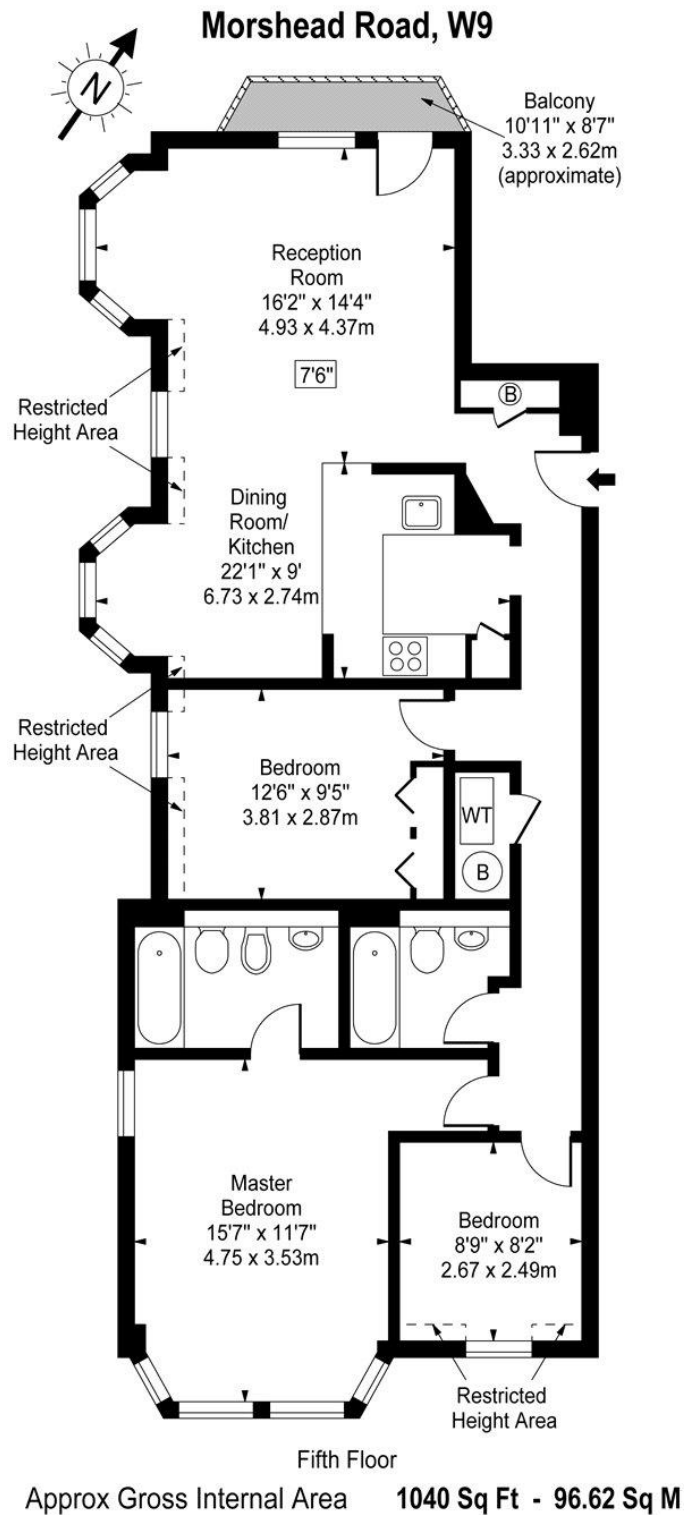


### Chestertons Little Venice Lettings

26 Clifton Road  
 Maida Vale  
 London  
 W9 1SX  
[littlevenicetlettingsusers@chestertons.co.uk](mailto:littlevenicetlettingsusers@chestertons.co.uk)  
 02072662369  
[chestertons.co.uk](http://chestertons.co.uk)

Additional tenant charges apply (fees apply to non-AST tenancies only)  
 Tenancy Agreement Fee: £300  
 References per Tenant/Guarantor: £60  
 Inventory check (approx. £100 – £250 inc. VAT)  
[chestertons.co.uk/property-to-rent/applicable-fees](http://chestertons.co.uk/property-to-rent/applicable-fees)





(Including Restricted Height Area)

For Illustration Purposes Only - Not To Scale

[www.goldlens.co.uk](http://www.goldlens.co.uk)

Ref. No. 007312M

