



# Crophthorne Court

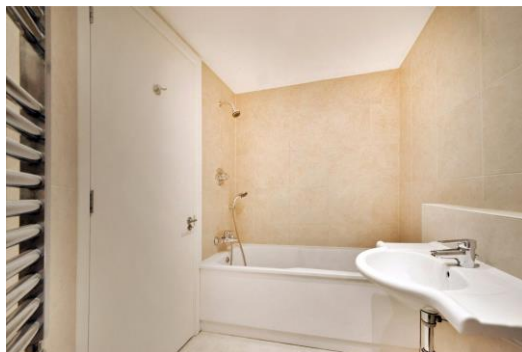
20-28 Maida Vale, W9

£4,000 per month  
(£923.08 per week)

A large three bedroom newly refurbished lateral flat in this imposing building in the heart of W9. Double reception with wooden floors & flooded with natural light. Three spacious bedrooms & two bathrooms. EPC C.

**CHESTERTONS**





# Crophthorne Court

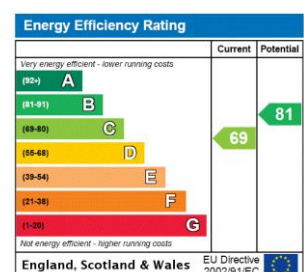
20-28 Maida Vale, W9

- Smart Mansion Block
- Double Reception & Smart Integrated Kitchen
- Three Spacious Bedrooms & Two Modern Bathrooms
- Moments To Warwick Avenue Station & Local Amenities
- EPC Rating C



A large three bedroom newly refurbished lateral flat in this imposing building in the heart of W9. The property is flooded with natural light throughout and comprises of a large double reception with wooden floors, separate integrated kitchen, master bedroom with en-suite, two further double bedrooms & additional bathroom. The property is moments to Warwick Avenue & the amenities of Clifton Road. EPC C.

**Minimum Term:** 12 months  
**Deposit Required:** 5 weeks  
**Local Authority:** City of Westminster  
**Council Tax Band:** G  
**EPC Rating:** C  
**Unfurnished**

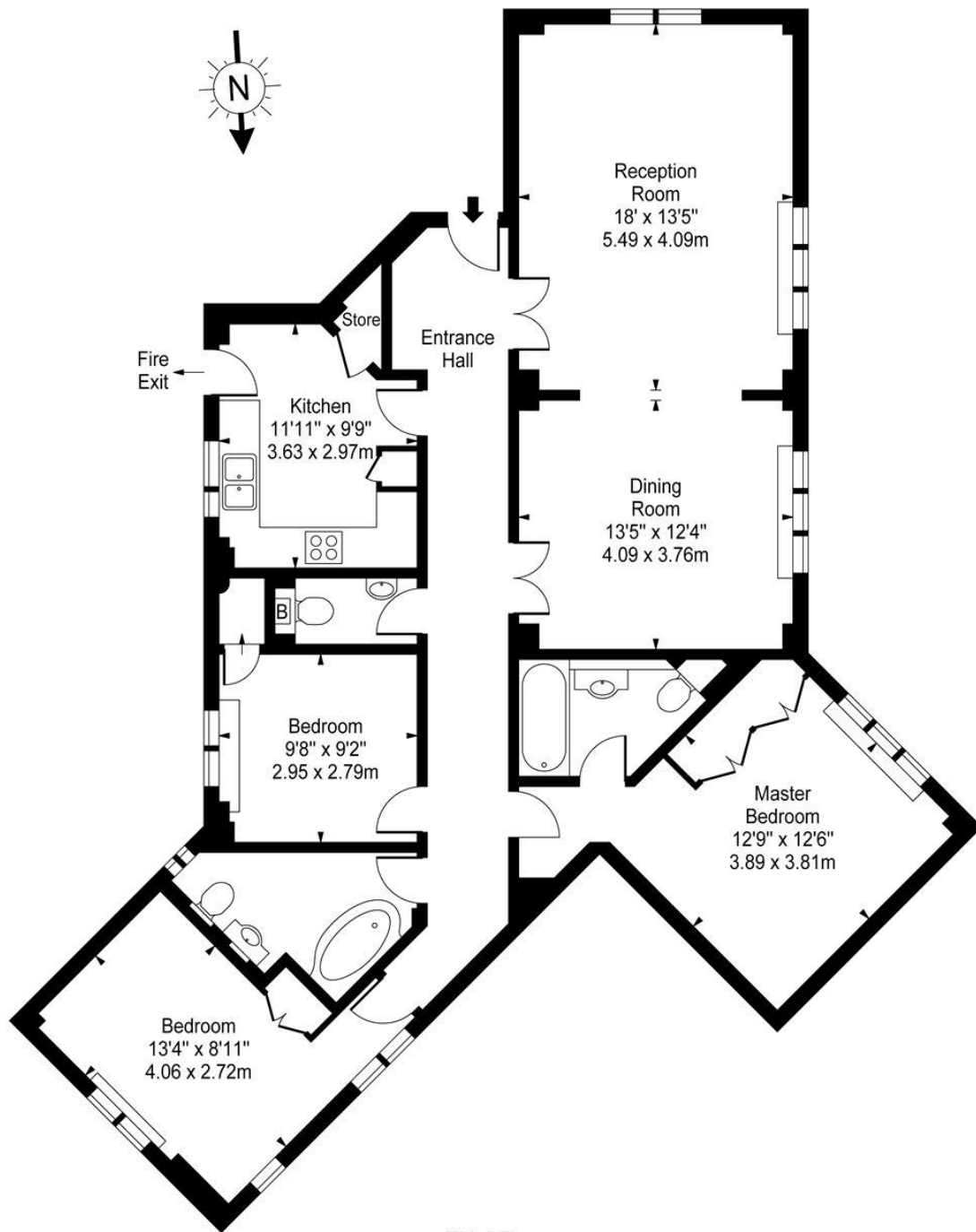


### *Chestertons Little Venice Lettings*

26 Clifton Road  
Maida Vale  
London  
W9 1SX  
[littlevenicelettingsusers@chestertons.co.uk](mailto:littlevenicelettingsusers@chestertons.co.uk)  
02072662369  
[chestertons.co.uk](http://chestertons.co.uk)

Additional tenant charges apply (fees apply to non-AST tenancies only)  
Tenancy Agreement Fee: £300  
References per Tenant/Guarantor: £60  
Inventory check (approx. £100 – £250 inc. VAT)  
[chestertons.co.uk/property-to-rent/applicable-fees](http://chestertons.co.uk/property-to-rent/applicable-fees)

# Crophthorne Court, Maida Vale, W9



Third Floor

Approx Gross Internal Area **1310 Sq Ft - 121.70 Sq M**

For Illustration Purposes Only - Not To Scale

[www.goldlens.co.uk](http://www.goldlens.co.uk)

Ref. No. 006029M

