



Carlton Mansions

213 Randolph Avenue, W9

£3,500 per month
(£807.69 per week)

Bright and spacious ground floor two bedroom apartment in this lovely mansion block overlooking Paddington Recreation Ground.



Carlton Mansions

213 Randolph Avenue, W9



Minimum Term: 12 months
Deposit Required: 5 weeks
Local Authority: City of Westminster
Council Tax Band: E
EPC Rating: C
Part Furnished

Chestertons Little Venice Lettings

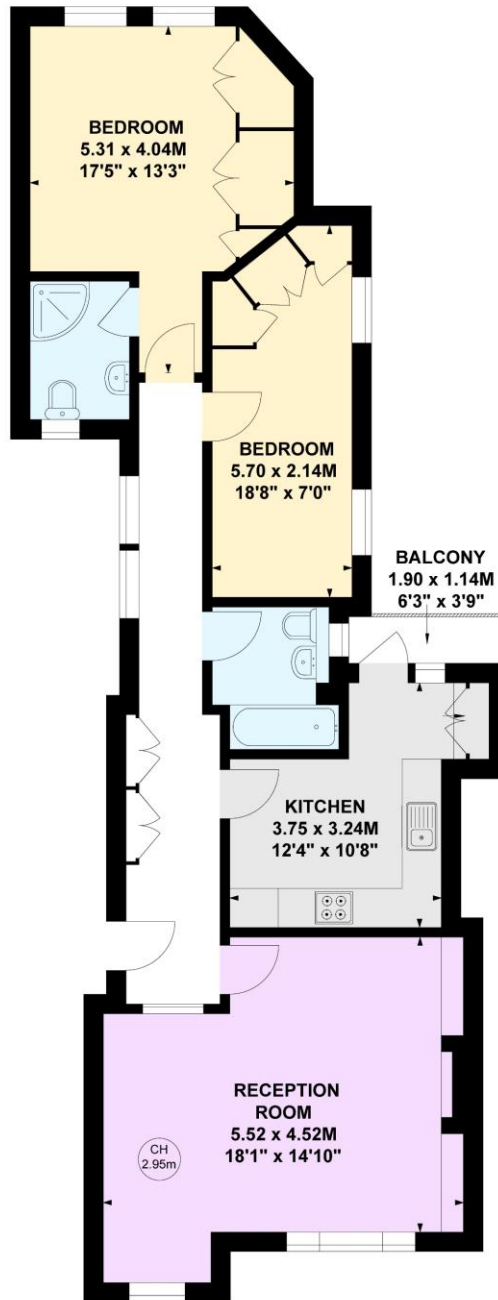
26 Clifton Road
Maida Vale
London
W9 1SX
littlevenicelettingsusers@chestertons.co.uk
02072662369
chestertons.co.uk

Additional tenant charges apply (fees apply to non-AST tenancies only)
Tenancy Agreement Fee: £300
References per Tenant/Guarantor: £60
Inventory check (approx. £100 – £250 inc. VAT)
[chestertons.co.uk/property-to-rent/applicable-fees](https://www.chestertons.co.uk/property-to-rent/applicable-fees)

Carlton Mansions, W9

Approximate gross internal area
84.73 sq m / 912 sq ft

Key :
CH - Ceiling Height



Ground Floor

**Not to scale, for guidance only and must not be relied upon as a statement of fact.
All measurements and areas are approximate only**

