



Atherstone Court

Delamere Terrace, W2

£2,750 per month
(£634.62 per week)

This completely refurbished three bedroom apartment is situated on the third floor within this purpose built development. The apartment comprises; large reception room, separate eat in kitchen, three bedrooms and bathroom.



Atherstone Court

Delamere Terrace, W2

- **This property does not have a HMO licence**
- Three Bedrooms
- Modern Kitchen
- Stylish Bathroom



****This property does not have a HMO licence****

This stunning apartment is located with canal views of the Grand Union Canal and has a private balcony!

This completely refurbished three double bedroom apartment is situated on the third floor within this secure purpose built development. The apartment comprises; large reception room, separate eat in kitchen, three double bedrooms and modern bathroom.

This apartment further benefits; brand new modern kitchen, stylish

Minimum Term:	12 months
Deposit Required:	5 weeks
Local Authority:	City of Westminster
Council Tax Band:	D
EPC Rating:	C
Unfurnished	

Chestertons Little Venice Lettings

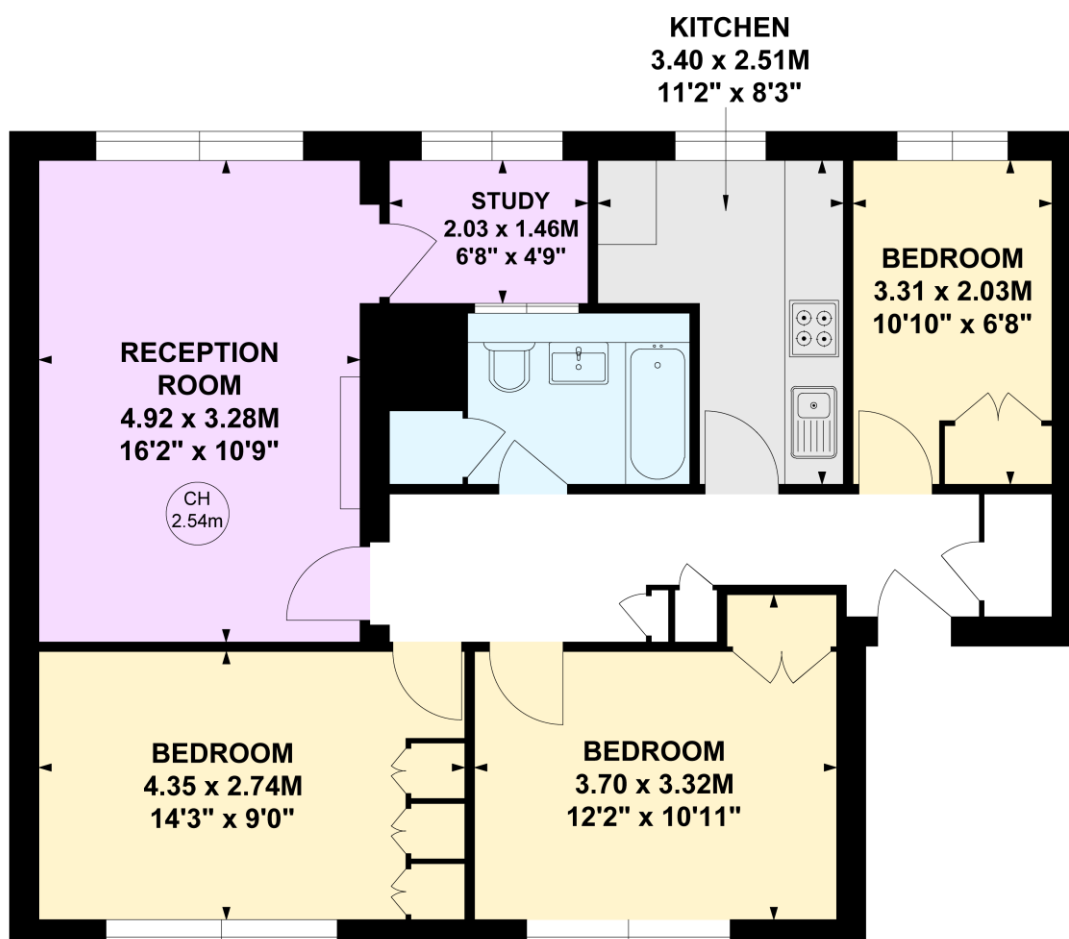
26 Clifton Road
Maida Vale
London
W9 1SX
littlevenicelettingsusers@chestertons.co.uk
02072662369
chestertons.co.uk

Additional tenant charges apply (fees apply to non-AST tenancies only)
Tenancy Agreement Fee: £300
References per Tenant/Guarantor: £60
Inventory check (approx. £100 – £250 inc. VAT)
chestertons.co.uk/property-to-rent/applicable-fees

Atherstone Court, W2

Approximate gross internal area
73.50 sq m / 791 sq ft

Key :
CH - Ceiling Height



Third Floor

Not to scale, for guidance only and must not be relied upon as a statement of fact.
All measurements and areas are approximate only

