



# Victoria Mansions

Grange Road, NW10

£2,396 per month  
(£552.92 per week)

Bright and well proportioned three bedroom apartment on the second floor of this popular mansion block. The property features a fully fitted kitchen with modern appliances, bathroom with a shower, large reception room and wooden flooring throughout.

**CHESTERTONS**



# Victoria Mansions

## Grange Road, NW10

- Suitable For Sharers!
- Popular Mansion Block
- Three Bedrooms
- Flexible on Furniture





**\*\*SUITABLE FOR SHARERS\*\***

Bright and well proportioned three bedroom apartment on the second floor of this popular mansion block. The property features a fully fitted kitchen with modern appliances, bathroom with a shower, large reception room and wooden flooring throughout.

This property is conveniently located to the local amenities of Willesden and Willesden Green.

---

<b>Minimum Term:</b>	<b>12 months</b>
<b>Deposit Required:</b>	<b>5 weeks</b>
<b>Local Authority:</b>	<b>Brent</b>
<b>Council Tax Band:</b>	<b>C</b>
<b>EPC Rating:</b>	<b>D</b>
<b>Furnished, Unfurnished</b>	

---

### *Chestertons Little Venice Lettings*

26 Clifton Road  
Maida Vale  
London  
W9 1SX  
littlevenicetlettingsusers@chestertons.co.uk  
02072662369  
chestertons.co.uk

Additional tenant charges apply (fees apply to non-AST tenancies only)  
Tenancy Agreement Fee: £300  
References per Tenant/Guarantor: £60  
Inventory check (approx. £100 – £250 inc. VAT)  
chestertons.co.uk/property-to-rent/applicable-fees

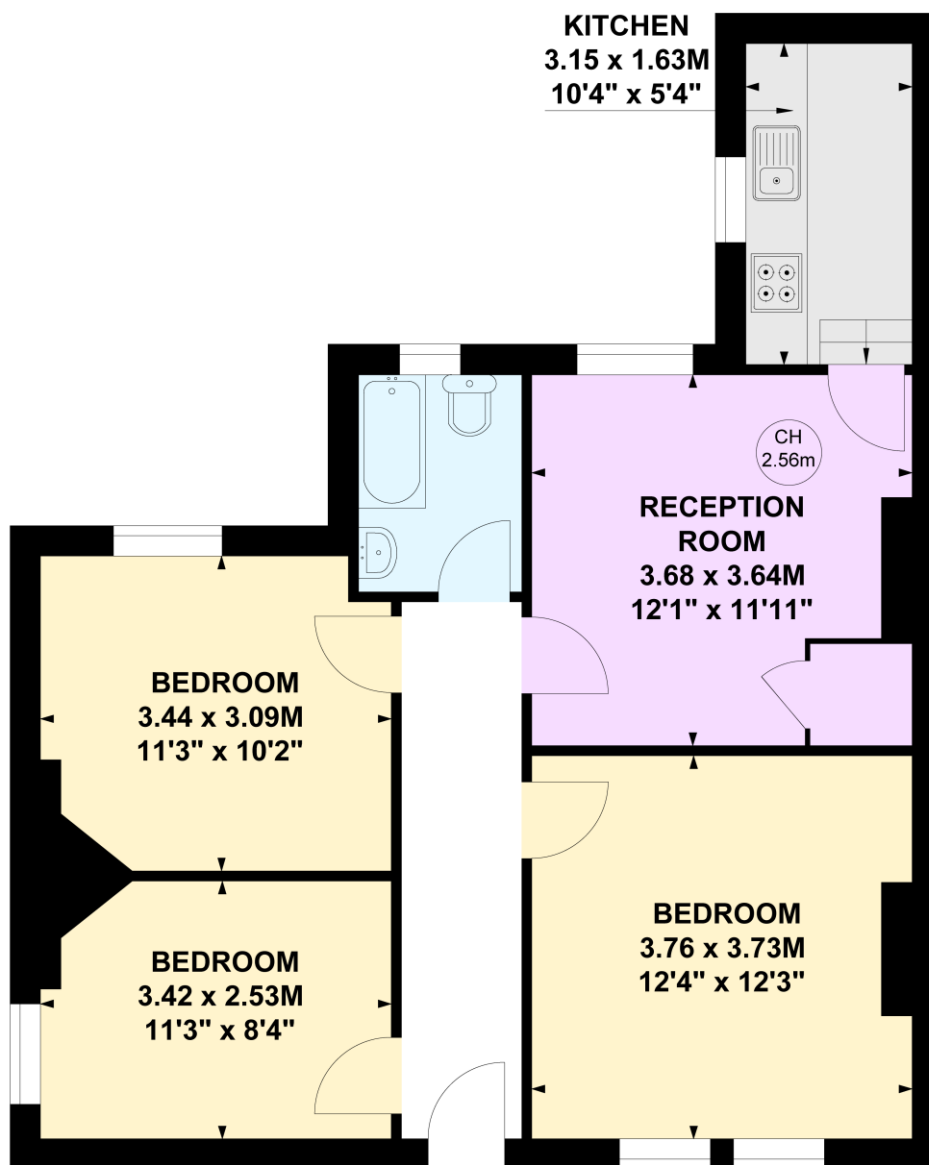
# Victoria Mansions, NW10

Approximate gross internal area

63.86 sq m / 687 sq ft

Key :

CH - Ceiling Height



## Second Floor

Not to scale, for guidance only and must not be relied upon as a statement of fact.

All measurements and areas are approximate only

