



Hansel Road

Kilburn Park, NW6

£2,950 per month
(£680.77 per week)

A large and bright two double bedroom flat spanning approximately 750 square foot and finished to a high specification throughout.

CHESTERTONS



Hansel Road

Kilburn Park, NW6

- Two Bedrooms
- Balcony
- Popular Block
- Great Location



A large and bright two double bedroom flat spanning approximately 750 square foot and finished to a high specification throughout, with an open plan kitchen towards the rear, eat-in kitchen, private balcony, lots of storage and on the fifth floor with far reaching views across London (with lift).

Hansel Road is near Paddington Recreational Ground, all local transport links and the shops and restaurants of Maida Vale and Queen's Park.

Minimum Term: 12 months
Deposit Required: 5 weeks
Local Authority: Brent
Council Tax Band: C
EPC Rating: B
Furnished

Chestertons Little Venice Lettings

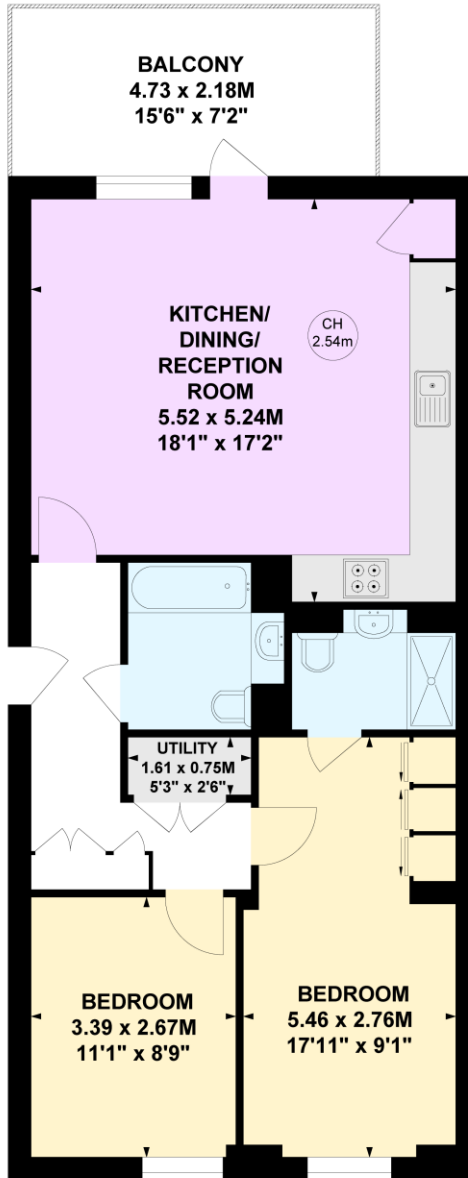
26 Clifton Road
Maida Vale
London
W9 1SX
littlevenicelettingsusers@chestertons.co.uk
02072662369
chestertons.co.uk

Additional tenant charges apply (fees apply to non-AST tenancies only)
Tenancy Agreement Fee: £300
References per Tenant/Guarantor: £60
Inventory check (approx. £100 – £250 inc. VAT)
chestertons.co.uk/property-to-rent/applicable-fees

Hansel Road, NW6

Approximate gross internal area
68.77 sq m / 740 sq ft

Key :
CH - Ceiling Height



Fifth Floor

Not to scale, for guidance only and must not be relied upon as a statement of fact.
All measurements and areas are approximate only