



Elizabeth Close

London, W9

£6,500 per month
(£1,500 per week)

Tucked away in a quiet gated close in the heart of Little Venice is this stylish and very well presented townhouse that benefits from off-street parking and a garage. The property boasts a beautiful, contemporary finish over four floors.



Elizabeth Close

London, W9

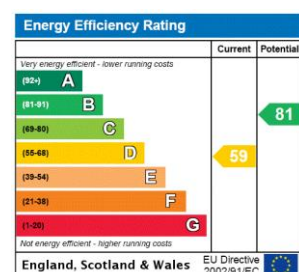


Tucked away in a quiet gated close in the heart of Little Venice is this stylish and very well presented townhouse that benefits from off-street parking. The property boasts a beautiful, contemporary finish over four floors.

Accommodation comprises: spacious eat in kitchen complete with a west facing balcony leading on to the bright reception room, four bedrooms with the principal suite occupying the entire top floor of the house with its own balcony, three bathrooms, guest cloakroom and large utility room.

Elizabeth Close is a gated development of beautiful houses in the

Minimum Term: 12 months
Deposit Required: 6 weeks
Local Authority: City of Westminster
Council Tax Band: H
EPC Rating: D
Part Furnished, Unfurnished



Chestertons Little Venice Lettings

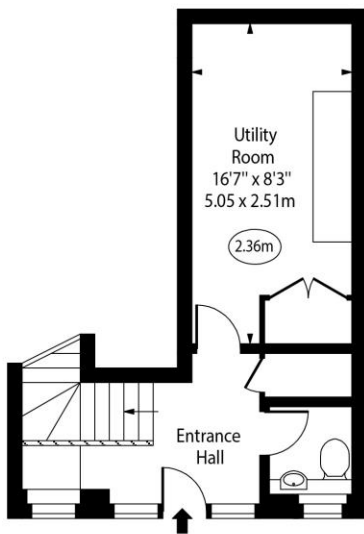
26 Clifton Road
Maida Vale
London
W9 1SX
littlevenicetlettingsusers@chestertons.co.uk
02072662369
chestertons.co.uk

Additional tenant charges apply (fees apply to non-AST tenancies only)
Tenancy Agreement Fee: £300
References per Tenant/Guarantor: £60
Inventory check (approx. £100 – £250 inc. VAT)
chestertons.co.uk/property-to-rent/applicable-fees

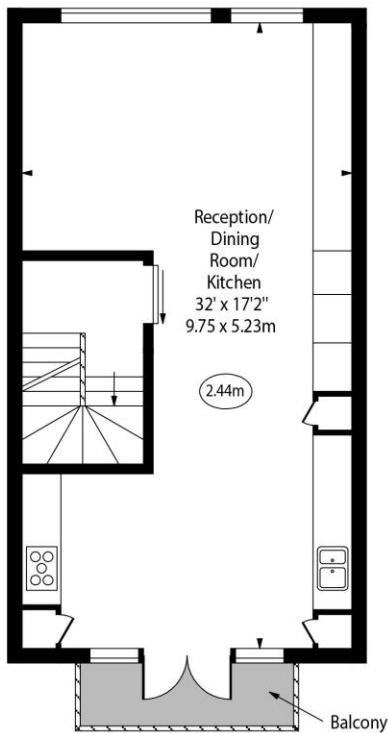
Elizabeth Close, W9



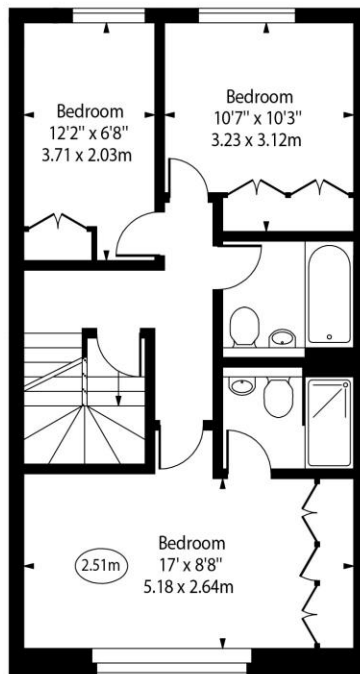
○ - Ceiling Height



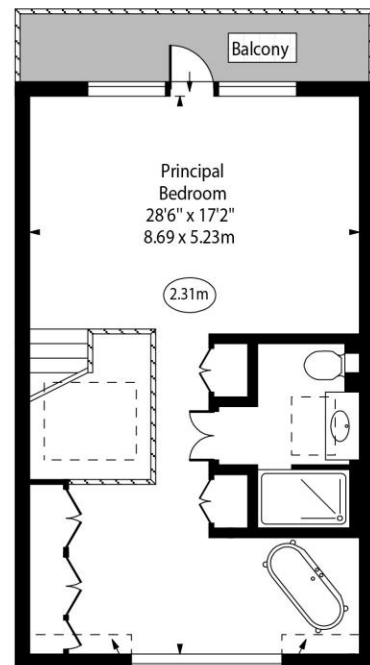
Ground Floor



First Floor



Second Floor



Third Floor

Approx Gross Internal Area 1832 Sq Ft - 170.19 Sq M

Approx. Floor Area Including Restricted Heights 1842 Sq Ft - 171.12 Sq M

For Illustration Purposes Only - Not To Scale
www.goldlens.co.uk
Ref. No. 025185E

