



# Randolph Road

Little Venice, W9

£5,000 per month  
(£1,153.85 per week)

Stunning three bedroom split level apartment set over the second and third floors of a beautiful period house in one of Little Venice's premier roads, just moments to the canal.

CHESTERTONS





# Randolph Road

## Little Venice, W9

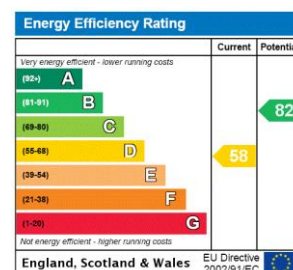
- Stunning Stucco Building
- Two/Three Double Bedrooms Over Two Floors
- One/Two Reception Rooms & Wooden Floors
- Moments to Canal & Warwick Avenue Underground



A stunning three bedroom split level apartment set over the second and third floors of a beautiful period house in one of Little Venice's premier roads, just moments to the canal. Compromising of bright reception rooms, modern kitchen, smart bathroom and a separate WC.

Located just moments to the cafes of Clifton Road, with Warwick Avenue Underground on the doorstep and an easy connection to Paddington.

**Minimum Term:** 12 months  
**Deposit Required:** 6 weeks  
**Local Authority:** Westminster City Council  
**Council Tax Band:** G  
**EPC Rating:** D  
**Part Furnished, Unfurnished**



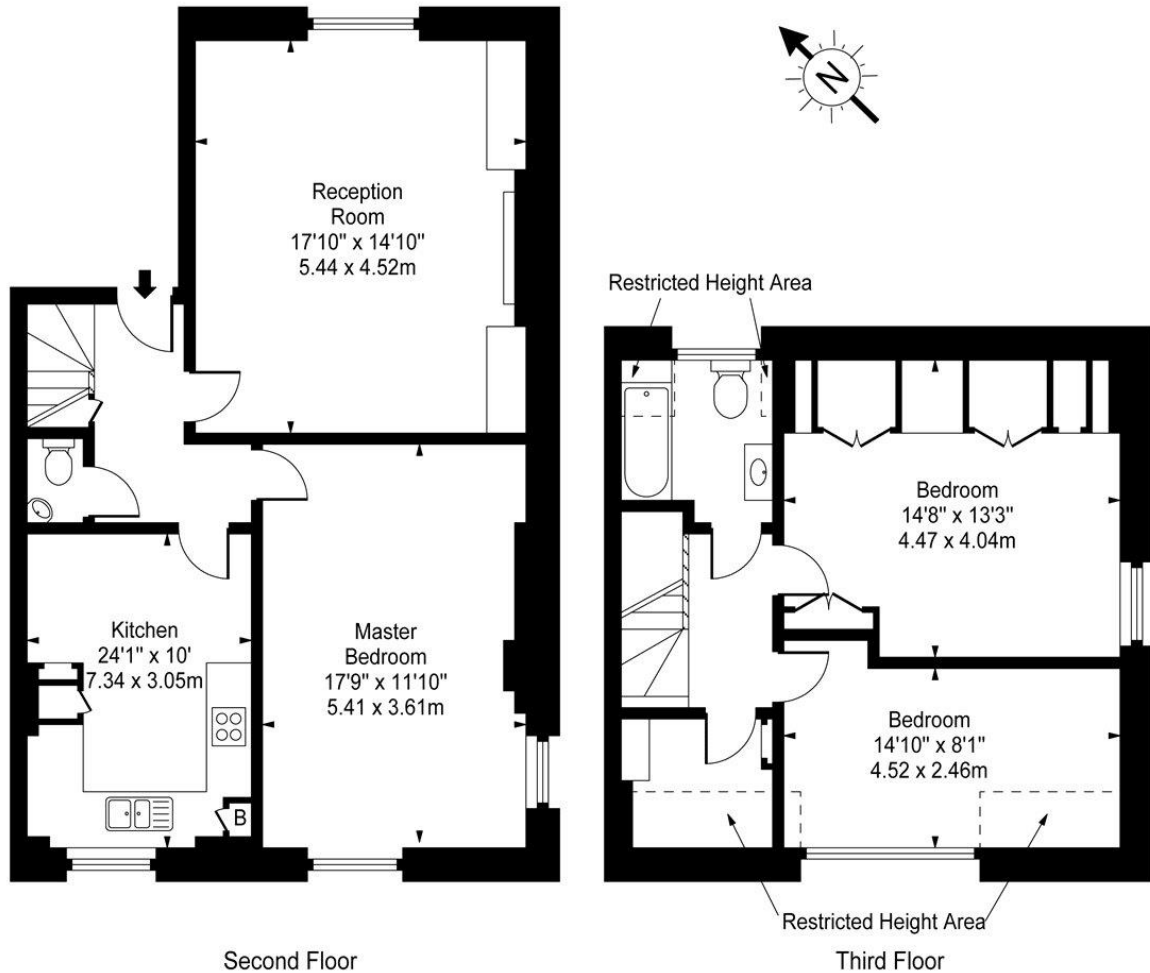
### *Chestertons Little Venice Lettings*

26 Clifton Road  
Maida Vale  
London  
W9 1SX  
littlenicelettingsusers@chestertons.co.uk  
02072662369  
chestertons.co.uk

Additional tenant charges apply (fees apply to non-AST tenancies only)  
Tenancy Agreement Fee: £300  
References per Tenant/Guarantor: £60  
Inventory check (approx. £100 – £250 inc. VAT)  
chestertons.co.uk/property-to-rent/applicable-fees



## Randolph Road, W9



**Approx Gross Internal Area 1200 Sq Ft - 111.48 Sq M**  
(Including Restricted Height Area)

For Illustration Purposes Only - Not To Scale  
[www.goldlens.co.uk](http://www.goldlens.co.uk)  
Ref. No. 008513K

