



Randolph Court

221 Randolph Avenue, W9

£3,250 per month
(£750 per week)

SHORT LET This spacious two double bedroom apartment is situated on the third floor within this stunning period conversion.



Randolph Court

221 Randolph Avenue, W9

- Smart Red Brick Block
- Two Spacious Bedrooms & Modern Bathroom
- Large Reception With Wooden Floors & Integrated Kitchen
- Close To Maida Vale Station

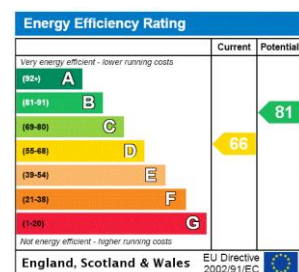


This spacious two double bedroom apartment is situated on the third floor within this stunning period conversion. The property comprise; spacious reception room, separate modern kitchen, two large double bedrooms and family bathroom.

This stunning apartment further benefits; wooden flooring, private balcony, spacious accommodation and an abundance of natural light. The property is offered furnished or unfurnished and available June.

The property is within close proximity to Maida Vale station and Paddington Recreation Ground.

Minimum Term: 1 months
Deposit Required: 4 weeks (subject to tenancy length)
Local Authority: City of Westminster
Council Tax Band: E
EPC Rating: D

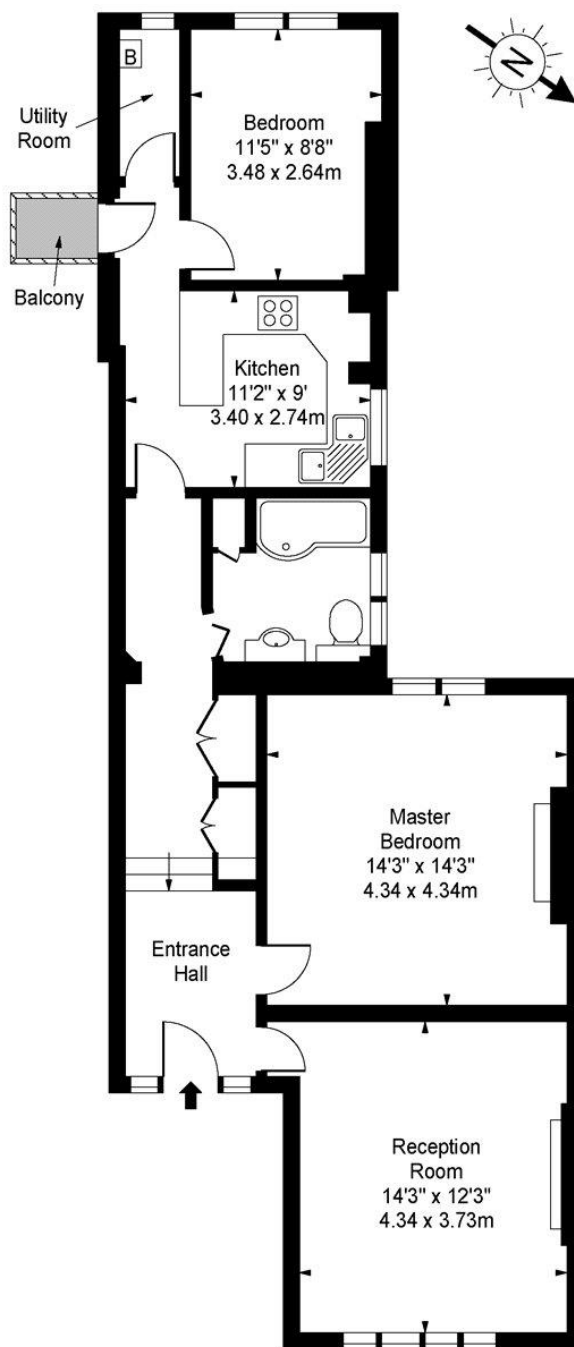


Chestertons Little Venice Lettings

26 Clifton Road
Maida Vale
London
W9 1SX
littlevenicelettingsusers@chestertons.co.uk
02072662369
chestertons.co.uk

Additional tenant charges apply (fees apply to non-AST tenancies only)
Tenancy Agreement Fee: £300
References per Tenant/Guarantor: £60
Inventory check (approx. £100 – £250 inc. VAT)
chestertons.co.uk/property-to-rent/applicable-fees

**Randolph Court,
Randolph Avenue, W9**



Second Floor

Approx Gross Internal Area 845 Sq Ft - 78.50 Sq M

For Illustration Purposes Only - Not To Scale

www.goldlens.co.uk

Ref. No. 004462M

