



Wymering Mansions

Wymering Road, W9

£4,000 per month
(£923.08 per week)

This handsome period apartment is on the second floor and comprises: Reception with BAY WINDOW; 3 good size double bedrooms; Modern kitchen; Contemporary bathroom, BALCONY. Close to the cafes of Clifton Road and Maida Vale. EPC rating D.

CHESTERTONS



Wymering Mansions

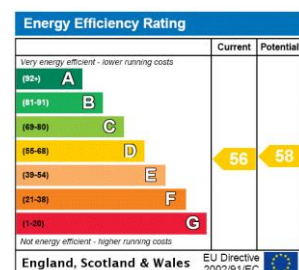
Wymering Road, W9

- Light & Bright Period Mansion Flat
- 3 Double Bedrooms & 1 Bathroom
- Spacious Reception & Balcony
- Close To Underground & EPC Rating D



A WELL PRESENTED APARTMENT in this pretty residential street moments from the green spaces of Paddington Recreational Ground. This handsome period apartment is on the second floor and comprises: Reception with BAY WINDOW and gas fire; 3 good size double bedrooms; Modern kitchen; Contemporary bathroom with UNDER FLOOR HEATING and SUNNY BALCONY. Good storage throughout and close to Warwick Avenue underground and the cafes of Clifton Road and Maida Vale. EPC rating D.

Minimum Term: 1 months
Deposit Required: 4 weeks (subject to tenancy length)
Local Authority: Westminster City Council
Council Tax Band: E
EPC Rating: C
Furnished, Part Furnished, Unfurnished



Chestertons Little Venice Lettings

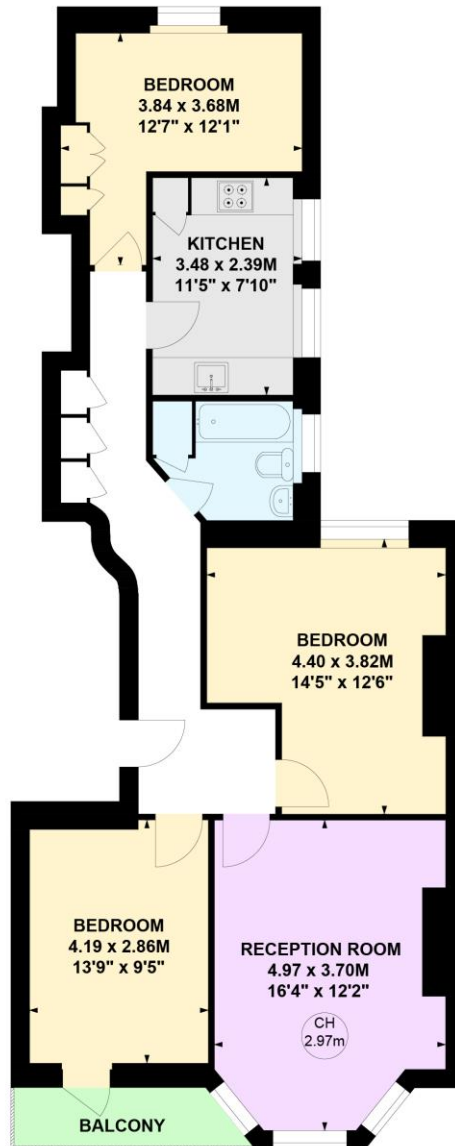
26 Clifton Road
Maida Vale
London
W9 1SX
littlevenicelettingsusers@chestertons.co.uk
02072662369
chestertons.co.uk

Additional tenant charges apply (fees apply to non-AST tenancies only)
Tenancy Agreement Fee: £300
References per Tenant/Guarantor: £60
Inventory check (approx. £100 – £250 inc. VAT)
chestertons.co.uk/property-to-rent/applicable-fees

Wymering Mansions, W9

Approximate gross internal area
78.69 sq m / 847 sq ft

Key :
CH - Ceiling Height



Second Floor

Not to scale, for guidance only and must not be relied upon as a statement of fact.
All measurements and areas are approximate only

