



# Shirland Road

London, W9

£4,000 per month  
(£923.08 per week)

A recently refurbished two bedroom garden apartment in a period conversion. Finished to a high standard throughout the property is well placed for access to the green spaces of Paddington Recreation and the transport links of Warwick Avenue station.



# Shirland Road

London, W9

- Large Garden Apartment
- Semi Open Plan Kitchen/Reception Room
- Two Double Bedrooms
- Two Modern Bathrooms
- Private Rear Garden

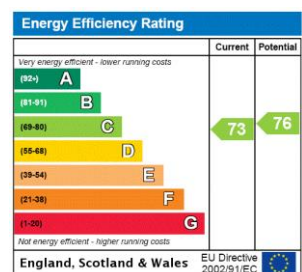


A recently refurbished two bedroom garden apartment set in a period conversion.

The property comprises a semi open plan kitchen and reception room, two double bedrooms, two modern bathrooms and a private rear garden.

Finished to a high standard throughout the property is well placed for access to the green spaces of Paddington Recreation and the transport links of Warwick Avenue underground station.

**Minimum Term:** 12 months  
**Deposit Required:** 6 weeks  
**Local Authority:** City of Westminster  
**Council Tax Band:** E  
**EPC Rating:** C  
**Furnished**

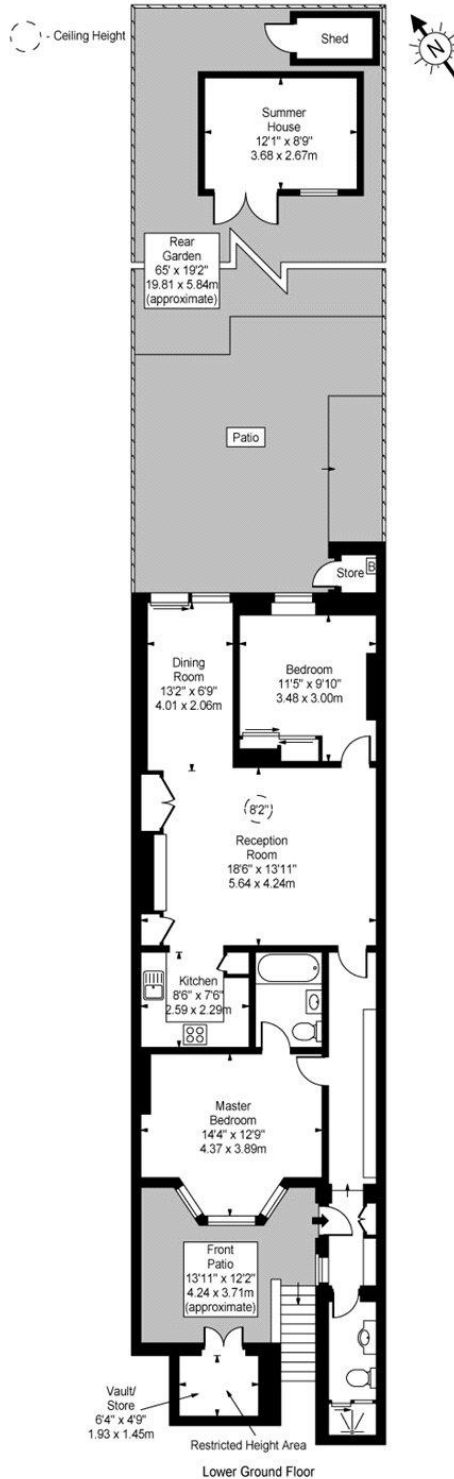


### *Chestertons Little Venice Lettings*

26 Clifton Road  
Maida Vale  
London  
W9 1SX  
littlevenice@chestertons.co.uk  
02072662369  
chestertons.co.uk

Additional tenant charges apply (fees apply to non-AST tenancies only)  
Tenancy Agreement Fee: £300  
References per Tenant/Guarantor: £60  
Inventory check (approx. £100 – £250 inc. VAT)  
chestertons.co.uk/property-to-rent/applicable-fees

Shirland Road, W9



Lower Ground Floor

Approx Gross Internal Area **915 Sq Ft - 85.00 Sq M**  
(Excluding Summer House, Vault & Store)

Summer House Area **106 Sq Ft - 9.85 Sq M**

For Illustration Purposes Only - Not To Scale  
www.goldens.co.uk  
Ref. No. 010489M

Chesterton Global Ltd trading as Chestertons for themselves and for the vendor of this property whose agents they are, give notice that (i) these particulars do not constitute any part of an offer or contract, (ii) all statements contained within these particulars are made without responsibility on the part of Chestertons or the vendor, (iii) whilst made in good faith, none of the statements contained within these particulars are to be relied upon as a statement or representation of fact, (iv) any intending purchasers must satisfy themselves by inspection or otherwise as to the correctness of each of the statements contained within these particulars, (v) the vendor does not make or give either Chestertons or any person in their employment any authority to make or give representation or warranty whatsoever in relation to this property. Wide angle lenses may be used. ©Copyright Chestertons | Chesterton Global Ltd | Registered Office 40 Connaught Street, Hyde Park, London W2 2AB Registered Company Number 05334580.



This paper is 100% recyclable