



Wellesley Court

Maida Vale, W9

£3,878.33 per month
(£895.00 per week)

This spacious four bedroom apartment is situated within this well maintained portered building.



Wellesley Court

Maida Vale, W9

- 4 Bedrooms
- Two bathrooms
- Open plain reception room
- Modern kitchen
- Porter
- Popular location
- Close to transport links



This spacious one four bedroom apartment is situated on the ground floor within this well maintained portered building.

This stunning apartment further benefits; access to communal gardens and ample storage.

Wellesley Court is ideally situated moments away from all the amenities of Little Venice and close to Warwick Avenue underground station.

Minimum Term: 12 months
Deposit Required: 5 weeks
Local Authority: City Of Westminster
Council Tax Band: F
EPC Rating: E
Part Furnished

Energy Efficiency Rating		Current	Potential
Very energy efficient - lower running costs			
(92-100)	A		
(81-91)	B		
(69-80)	C		77
(55-68)	D		
(39-54)	E	48	
(21-38)	F		
(1-20)	G		
Not energy efficient - higher running costs			
England, Scotland & Wales		EU Directive 2002/91/EC	

Chestertons Little Venice Lettings

26 Clifton Road
Maida Vale
London
W9 1SX
littlevenice@chestertons.co.uk
02072662369
chestertons.co.uk

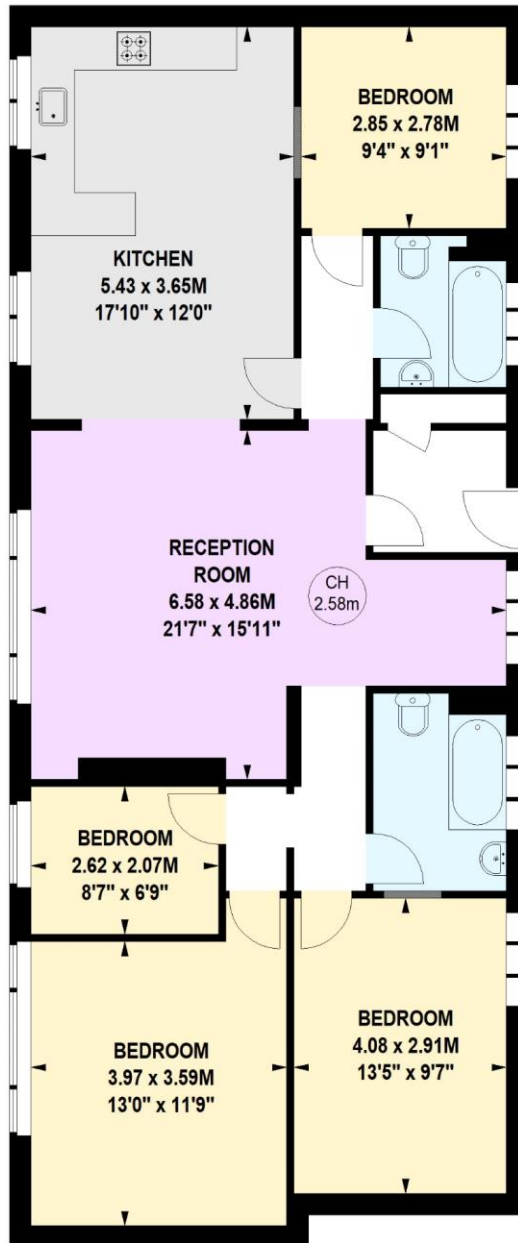
Additional tenant charges apply (fees apply to non-AST tenancies only)
Tenancy Agreement Fee: £300
References per Tenant/Guarantor: £60
Inventory check (approx. £100 – £250 inc. VAT)
chestertons.co.uk/property-to-rent/applicable-fees

Wellesley Court, Maida Vale, W9

Approximate gross internal area

Key :
CH - Ceiling Height

108.69 sq m / 1170 sq ft



Fourth Floor

Not to scale, for guidance only and must not be relied upon as a statement of fact.
All measurements and areas are approximate only

