



St Peters Place

Little Venice, W9

£4,750 per month
(£1,096.15 per week)

A three bedroom, two bathroom modern townhouse set in a quiet gated mews development. The property benefits from an integrated garage and a private patio garden, whilst it is well located for access to both Maida Vale and Warwick Avenue stations.



St Peters Place

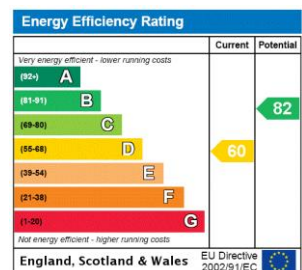
Little Venice, W9

- Attractive Modern Mews House
- 3 Bedrooms
- Courtyard
- Private Garage
- Off Road Parking
- Quiet Gated Development
- Close to Transport & Cafes



A three bedroom modern townhouse set in a quiet gated mews development. The property comprises a reception/dining room and a separate kitchen on the ground floor, a second reception room, double bedroom and a bathroom on the first floor, then two double bedrooms and a further bathroom and eve's storage on the second floor. Further benefits include an integrated garage and a private rear patio garden, whilst the property is well located for access to both Maida Vale and Warwick Avenue stations.

Minimum Term: 12 months
Deposit Required: 6 weeks
Local Authority: City Of Westminster
Council Tax Band: G
EPC Rating: D
Unfurnished

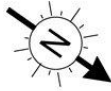


Chestertons Little Venice Lettings

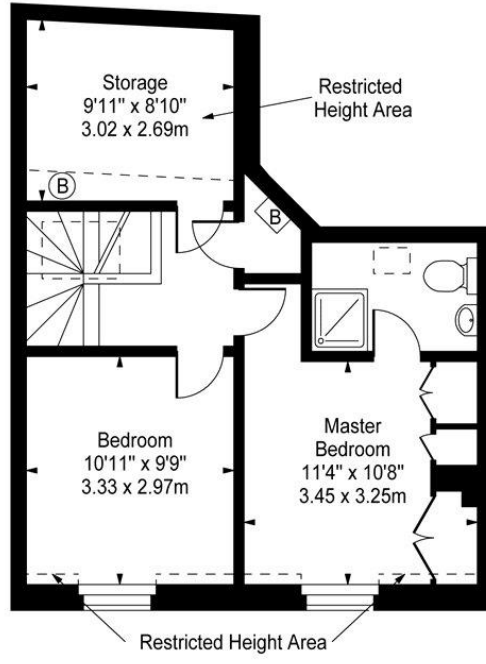
26 Clifton Road
Maida Vale
London
W9 1SX
littlevenice@chestertons.co.uk
02072662369
chestertons.co.uk

Additional tenant charges apply (fees apply to non-AST tenancies only)
Tenancy Agreement Fee: £300
References per Tenant/Guarantor: £60
Inventory check (approx. £100 – £250 inc. VAT)
chestertons.co.uk/property-to-rent/applicable-fees

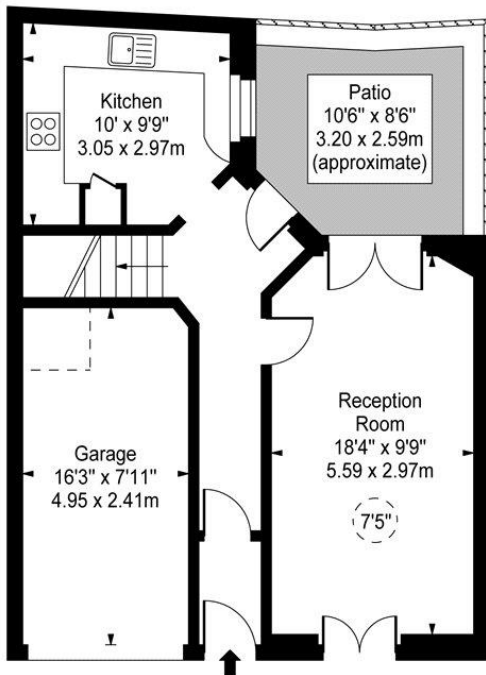
St Peters Place, W9



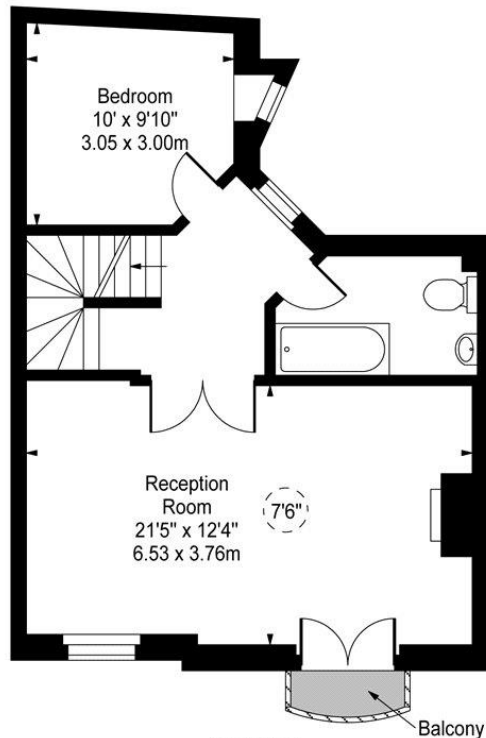
○ - Ceiling Height



Second Floor



Ground Floor



First Floor

Approx Gross Internal Area 1518 Sq Ft - 141.02 Sq M
(Including Garage & Restricted Height Area)

For Illustration Purposes Only - Not To Scale
www.goldlens.co.uk
Ref. No. 010737J

