



# Edbrooke Road

London, W9

£6,500 per month  
(£1,500 per week)

(SHORT LET) A spacious and well-maintained family home in the heart of Maida Vale with its own private entrance. The property offers 3 bedrooms, a large open plan kitchen/ living room with a newly refurbished kitchen and top-of-the line appliances.





# Edbrooke Road

## London, W9

- Short let
- Available 2nd October - 1st November
- Newly refurbished
- Three bedrooms
- Two bathrooms
- Wooden floors
- Furnished
- 1205SFT



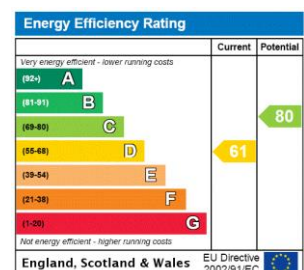


A spacious and well-maintained family home in the heart of Maida Vale with its own private entrance. The duplex property offers a large open plan kitchen/ living room with a newly refurbished kitchen and top-of-the line appliances. The bright and airy principal bedroom comes with a separate seating area offering ample space, in addition to a second double bedroom and third single bedroom.

Further benefits include: a sizable family bathroom that has also just been renovated, an additional shower room, floor to ceiling windows and hard wooden flooring throughout.

Located moments from the local amenities of Maida Vale within

**Minimum Term:** 12 months  
**Deposit Required:** 6 weeks  
**Local Authority:** City Of Westminster  
**Council Tax Band:** D  
**EPC Rating:** D  
**Furnished**



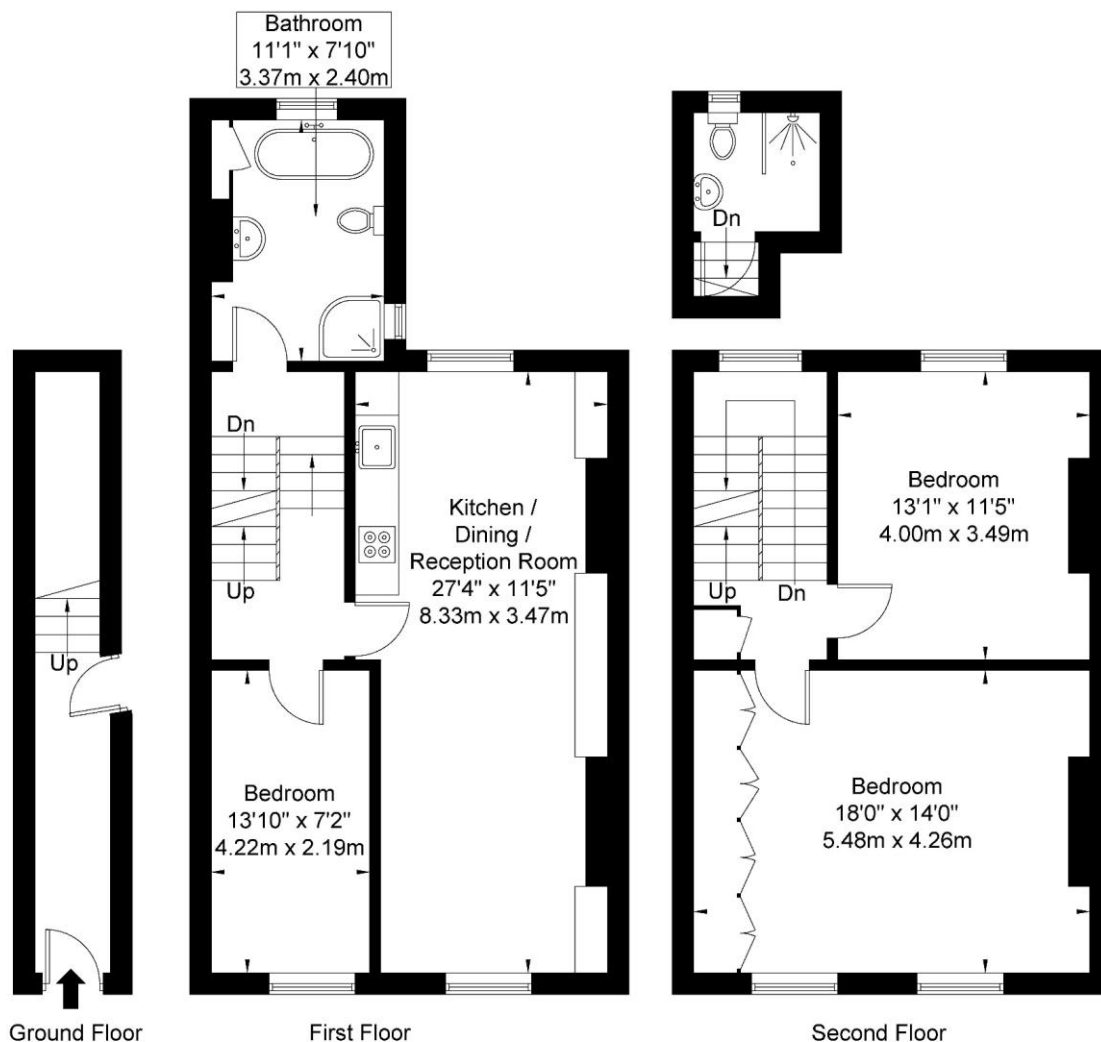
### Chestertons Little Venice Lettings

26 Clifton Road  
 Maida Vale  
 London  
 W9 1SX  
 littlevenice@chestertons.co.uk  
 02072662369  
 chestertons.co.uk

Additional tenant charges apply (fees apply to non-AST tenancies only)  
 Tenancy Agreement Fee: £300  
 References per Tenant/Guarantor: £60  
 Inventory check (approx. £100 – £250 inc. VAT)  
[chestertons.co.uk/property-to-rent/applicable-fees](http://chestertons.co.uk/property-to-rent/applicable-fees)

# Edbrooke Road, W9 2DG

Approx. Gross Internal Area = 112.0 sq m / 1205 sq ft



Ref

Copyright **BLEU  
PLAN**

The Floor plan is not to scale and measurements and areas shown are approximate and therefore should be used for illustrative purposes only. The plan has been prepared in accordance with the RICS code of Measuring Practice and whilst we have confidence in the information produced it must not be relied on. If there is any aspect of particular importance, you should carry out or commission your own inspection of the property.

Copyright @ BLEUPLAN

