



# Clifton Gardens

Little Venice, W9

£2,600 per month  
(£600 per week)

A light & airy two bedroom second floor apartment in this handsome White Stucco fronted conversion, located in a prime Little Venice.



# Clifton Gardens

Little Venice, W9

- Stucco Fronted Victorian Conversion
- 2 Double Bedrooms
- Bright and Airy Reception Room Space
- Moments to Cafes & Underground Station

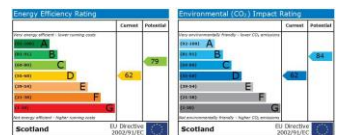
A light & airy two bedroom second floor apartment in this handsome White Stucco fronted conversion, located in a prime Little Venice.

The accommodation comprises: a good size reception room overlooking stunning communal gardens; galley kitchen, family bathroom and two bedrooms.

The property also benefits from access to sought after communal gardens and off street parking, and is located just moments from: The Canal, Warwick Avenue Underground Station and the many cafes of Clifton Road.

---

**Minimum Term:** 12 months  
**Deposit Required:** 5 weeks  
**Local Authority:** Westminster City Council  
**Council Tax Band:** F  
**EPC Rating:** C  
**Unfurnished**



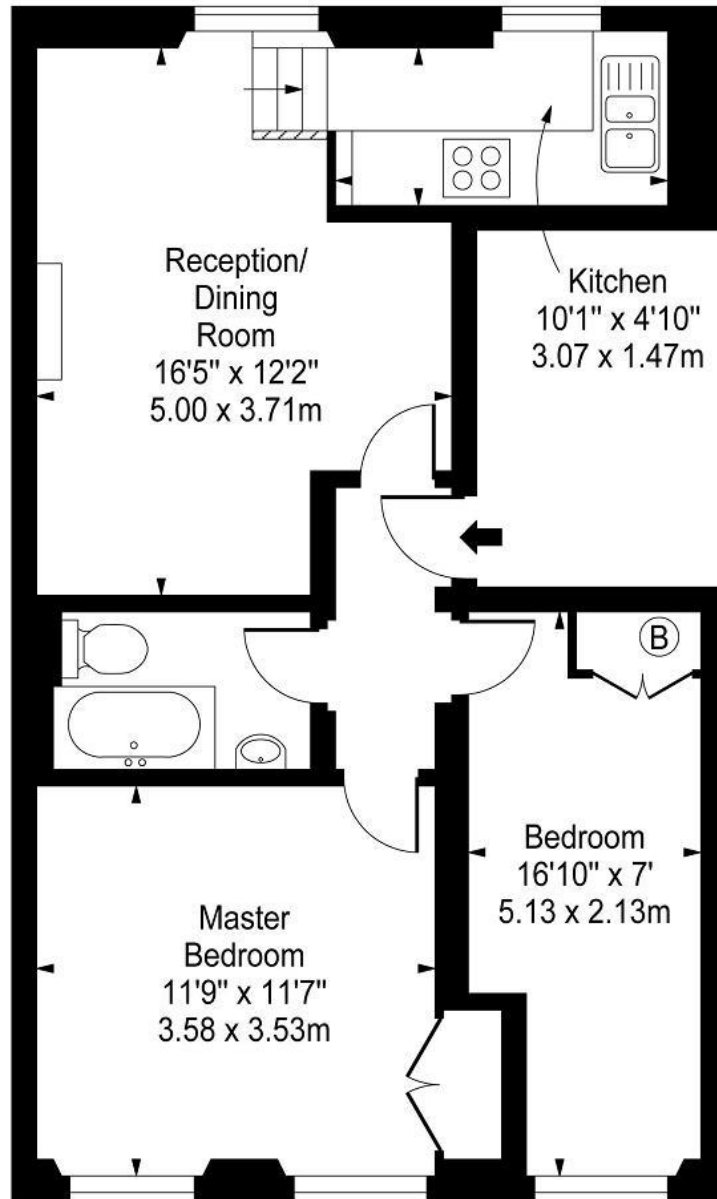
---

### *Chestertons Little Venice Lettings*

26 Clifton Road  
Maida Vale  
London  
W9 1SX  
littlevenice@chestertons.co.uk  
02072662369  
chestertons.co.uk

Additional tenant charges apply (fees apply to non-AST tenancies only)  
Tenancy Agreement Fee: £300  
References per Tenant/Guarantor: £60  
Inventory check (approx. £100 – £250 inc. VAT)  
chestertons.co.uk/property-to-rent/applicable-fees

# Clifton Gardens, Little Venice, W9



Second Floor

Approx Gross Internal Area **588 Sq Ft - 54.63 Sq M**

For Illustration Purposes Only - Not To Scale

Floor Plan by [www.bpmmediagroup.com](http://www.bpmmediagroup.com)

Ref: No. P53321

