



Elgin Mansions

Elgin Avenue, W9

£3,350 per month
(£773.08 per week)

A fantastic second floor three bedroom apartment in this prestigious mansion block moments to Paddington Recreation. The property comprises reception with high ceilings and a bay window, large eat in kitchen and two bathrooms.



Elgin Mansions

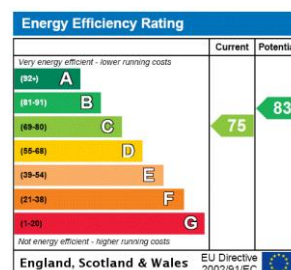
Elgin Avenue, W9

- Handsome Mansion Block
- Two Double Bedrooms & Study Or Third Bedroom
- Large Reception With Bay Window & Private Balcony
- Moments To Maida Vale Underground
- EPC Rating C



A fantastic second floor three bedroom apartment in this prestigious mansion block moments to Paddington Recreation. The property comprises reception with high ceilings and a bay window, master bedroom with ample storage and an en-suite bathroom, second double bedroom with access to a private balcony, great size study or small third bedroom, large eat in kitchen and second shower room. The property benefits from wooden floors throughout and is within walking distance to Maida Vale underground station.

Minimum Term: 12 months
Deposit Required: 6 weeks
Local Authority: Westminster City Council
Council Tax Band: F
EPC Rating: C
Unfurnished



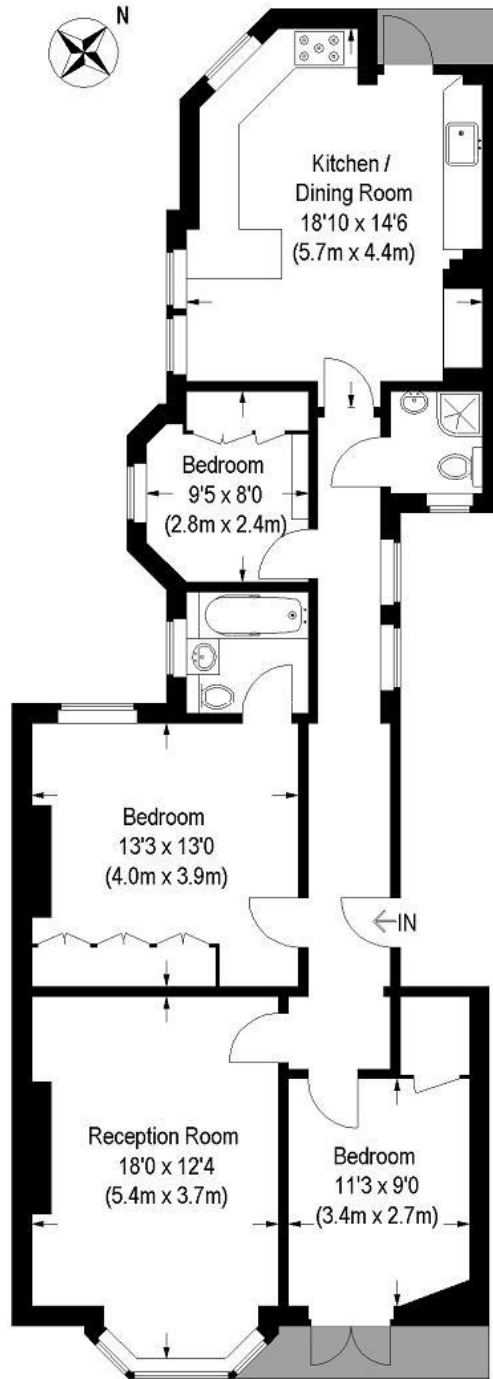
Chestertons Little Venice Lettings

26 Clifton Road
Maida Vale
London
W9 1SX
littlevenice@chestertons.co.uk
02072662369
chestertons.co.uk

Additional tenant charges apply (fees apply to non-AST tenancies only)
Tenancy Agreement Fee: £300
References per Tenant/Guarantor: £60
Inventory check (approx. £100 – £250 inc. VAT)
chestertons.co.uk/property-to-rent/applicable-fees

Elgin Avenue, W9

Approximate Gross Internal Area :- 1033 sq ft / 96 sq m



Second Floor

This plan is for layout guidance only. Not drawn to scale unless stated. Windows and door openings are approximate. Whilst every care is taken in the preparation of this plan, please check all dimensions, shapes and compass bearings before making any decisions reliant upon them. (ID42724)

