



Carriage House

88-90 Randolph Avenue, W9

£2,500 per month
(£576.92 per week)

A bright newly decorated one bedroom in this fabulous period conversion in the heart of W9. Comprising of bright open plan integrated kitchen & reception, double bedroom with storage & modern bathroom. Moments to Warwick Avenue. EPC rating C.



Carriage House

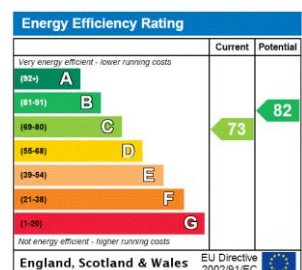
88-90 Randolph Avenue, W9

- Fantastic Period Conversion
- Newly Decorated Throughout With Bright Reception
- Modern Kitchen & Double Bedroom
- Moments To Warwick Avenue
- EPC Rating C



A bright newly decorated one bedroom in this fabulous period conversion in the heart of W9. Comprising of a bright open plan integrated kitchen & reception with wooden floors, double bedroom with storage & modern bathroom. Moments to Warwick Avenue. EPC rating C.

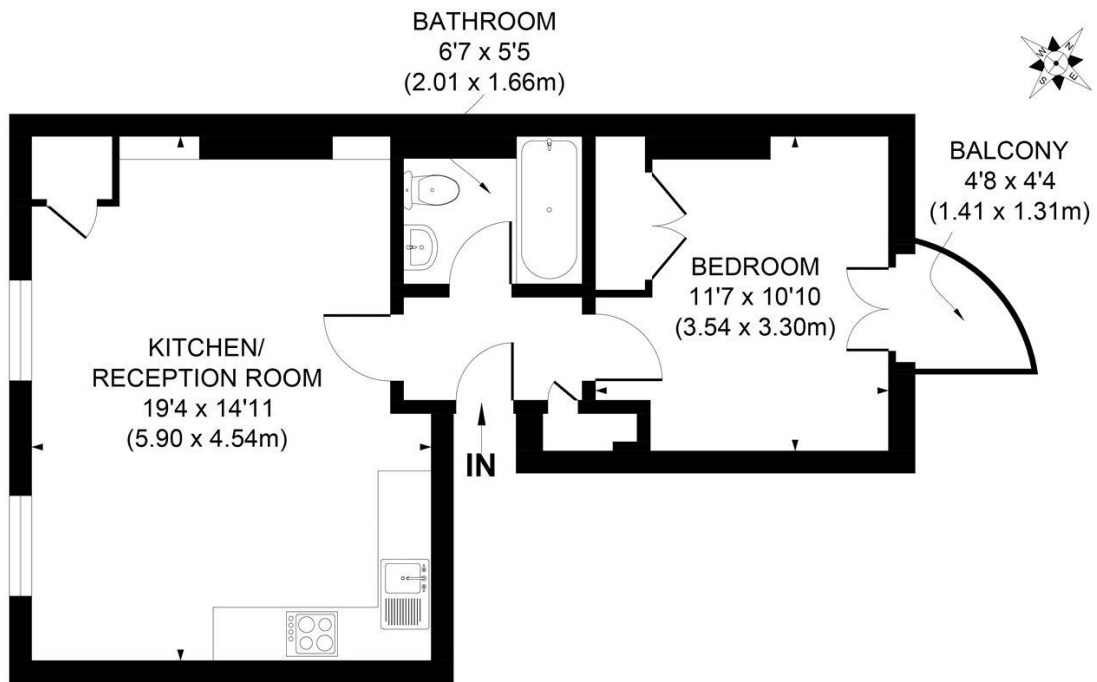
Minimum Term: 12 months
Deposit Required: 5 weeks
Local Authority: City Of Westminster
Council Tax Band: E
EPC Rating: C
Furnished



Chestertons Little Venice Lettings

26 Clifton Road
Maida Vale
London
W9 1SX
littlevenice@chestertons.co.uk
02072662369
chestertons.co.uk

Additional tenant charges apply (fees apply to non-AST tenancies only)
Tenancy Agreement Fee: £300
References per Tenant/Guarantor: £60
Inventory check (approx. £100 – £250 inc. VAT)
chestertons.co.uk/property-to-rent/applicable-fees



SECOND FLOOR

APPROX. GROSS INTERNAL FLOOR AREA 474 SQ. FT / 44.06 SQ. M

Illustration for identification purpose only, not to scale
 All measurements are maximum, and includes wardrobes and window bays where applicable
 Prepared by Pixangle ©. Tel 020 8870 2118

