



Chevening Road

London, NW6

£2,058.33 per month
(£475 per week)

A lovely two bedroom apartment situated on the top floor of this period building. Compromising of two bedrooms, open plan reception and family bathroom.



Chevening Road

London, NW6

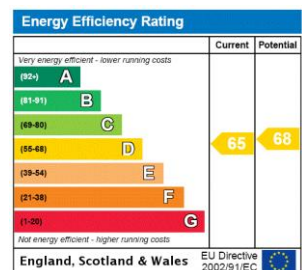
- Two bedroom
- Second floor
- Part furnished
- EPC D
- 622 SQFT



A lovely two bedroom apartment situated on the second floor of this period building. Compromising of two bedrooms, open plan reception and family bathroom.

Queens Park is within a conservation area with Queens Park Bakerloo Line (zone 2), National Railway offering easy access into the West End.

Minimum Term: 12 months
Deposit Required: 5 weeks
Local Authority: London Borough of Brent
Council Tax Band: D
EPC Rating: D
Furnished, Part Furnished



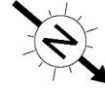
Chestertons Little Venice Lettings


26 Clifton Road
 Maida Vale
 London
 W9 1SX
 littlevenice@chestertons.co.uk
 02072662369
 chestertons.co.uk

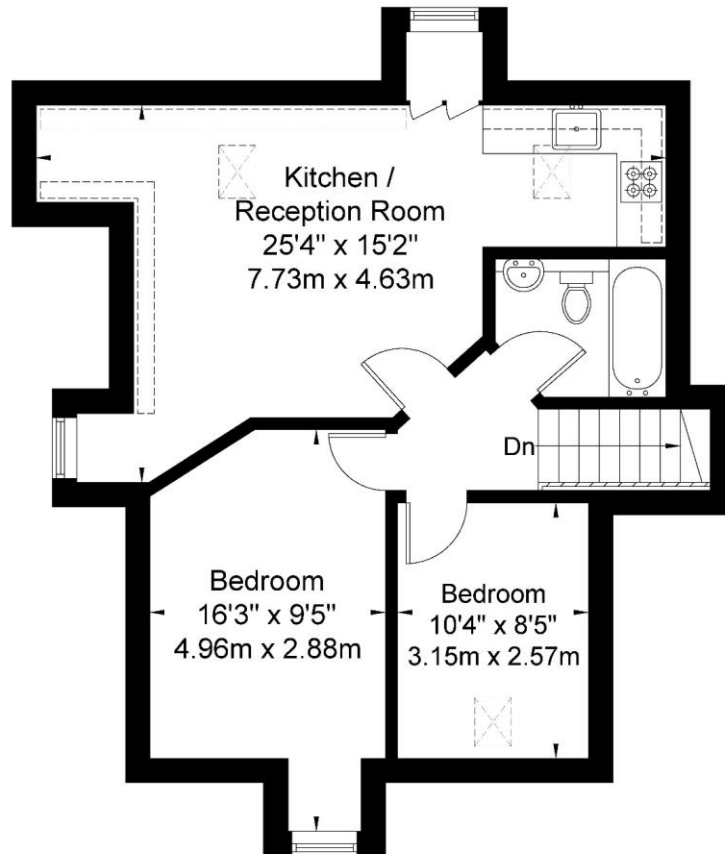
Additional tenant charges apply (fees apply to non-AST tenancies only)
 Tenancy Agreement Fee: £300
 References per Tenant/Guarantor: £60
 Inventory check (approx. £100 – £250 inc. VAT)
chestertons.co.uk/property-to-rent/applicable-fees

Chevening Road, NW6 6DA

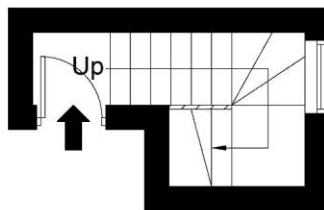
Approx Gross Internal Area = 57.8 sq m / 622 sq ft



 = Reduced headroom below 1.5m / 5'0



Second Floor



First Floor

Ref

Copyright **BLEU
PLAN**

The Floor plan is not to scale and measurements and areas shown are approximate and therefore should be used for illustrative purposes only. The plan has been prepared in accordance with the RICS code of Measuring Practice and whilst we have confidence in the information produced it must not be relied on. If there is any aspect of particular importance, you should carry out or commission your own inspection of the property.

Copyright @ BLEUPLAN

