



Elgin Avenue

Little Venice, W9

£2,800 per month
(£646.15 per week)

This newly refurbished two double bedroom apartment is situated on the top floor within this impressive period conversion. The property comprises; open plan reception room, two double bedrooms and two bathrooms.



Elgin Avenue

Little Venice, W9

- Two bedrooms
- Two bathrooms
- Long let
- Furnished
- EPC C

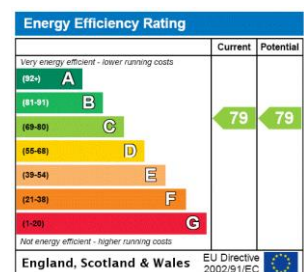


This newly refurbished two double bedroom apartment is situated on the top floor within this impressive period conversion. The property comprises; open plan reception room, two double bedrooms and two bathrooms.

This stunning apartment further benefits; high ceilings, en-suite bathroom, modern kitchen and an abundance of natural light. The property is offered part-furnished and available NOW.

Elgin Avenue is ideally situated moments from local amenities and close to Warwick Avenue underground station.

Minimum Term: 12 months
Deposit Required: 5 weeks
Local Authority: City Of Westminster
Council Tax Band: D
EPC Rating: C
Furnished



Chestertons Little Venice Lettings

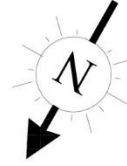
26 Clifton Road
Maida Vale
London
W9 1SX
littlevenice@chestertons.co.uk
02072662369
chestertons.co.uk

Additional tenant charges apply (fees apply to non-AST tenancies only)
Tenancy Agreement Fee: £300
References per Tenant/Guarantor: £60
Inventory check (approx. £100 – £250 inc. VAT)
chestertons.co.uk/property-to-rent/applicable-fees

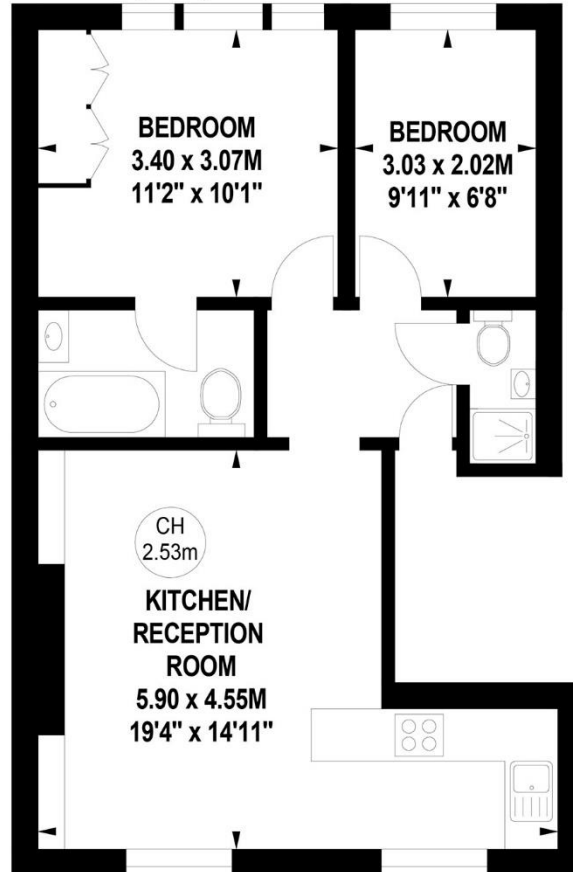
Elgin Avenue, W9

Approximate gross internal area

48.03 sq m / 517 sq ft



Key :
CH - Ceiling Height



Second Floor

The floor plan is not to scale and measurements and areas shown are approximate and therefore should be used for illustrative purposes only.

The plan has been prepared in accordance with the RICS code of Measuring Practice and whilst we have confidence in the information produced, it must not be relied on.

If there is any aspect of particular importance, you should carry out or commission your own inspection of the property.

Copyright of FeaturePRO.

