



Lanark Road

London, W9

£2,750 per month
(£634.62 per week)

A bright & spacious two bedroom in the heart of Maida Vale. Recently refurbished & benefitting from ample storage. Reception with wooden floors, contemporary integrated kitchen, two double bedrooms & modern bathroom. EPC C



Lanark Road

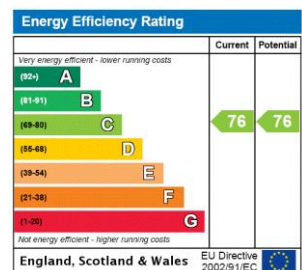
London, W9

- Modern Flat
- Two Spacious Bedrooms & Contemporary Kitchen & Bathroom
- Recently Refurbished & Offering Ample Storage
- Close To Maida Vale Station



A bright & modern spacious two bedroom in the heart of Maida Vale. Recently refurbished & benefitting from ample storage throughout. There is a spacious reception with wooden floors leading to a contemporary integrated kitchen, two double bedrooms & modern bathroom. Further benefitting from a private front door, walking distance to Maida Vale station and the amenities of Elgin Avenue. EPC rating C.

Minimum Term: 12 months
Deposit Required: 5 weeks
Local Authority: City Of Westminster
Council Tax Band: F
EPC Rating: C
Part Furnished



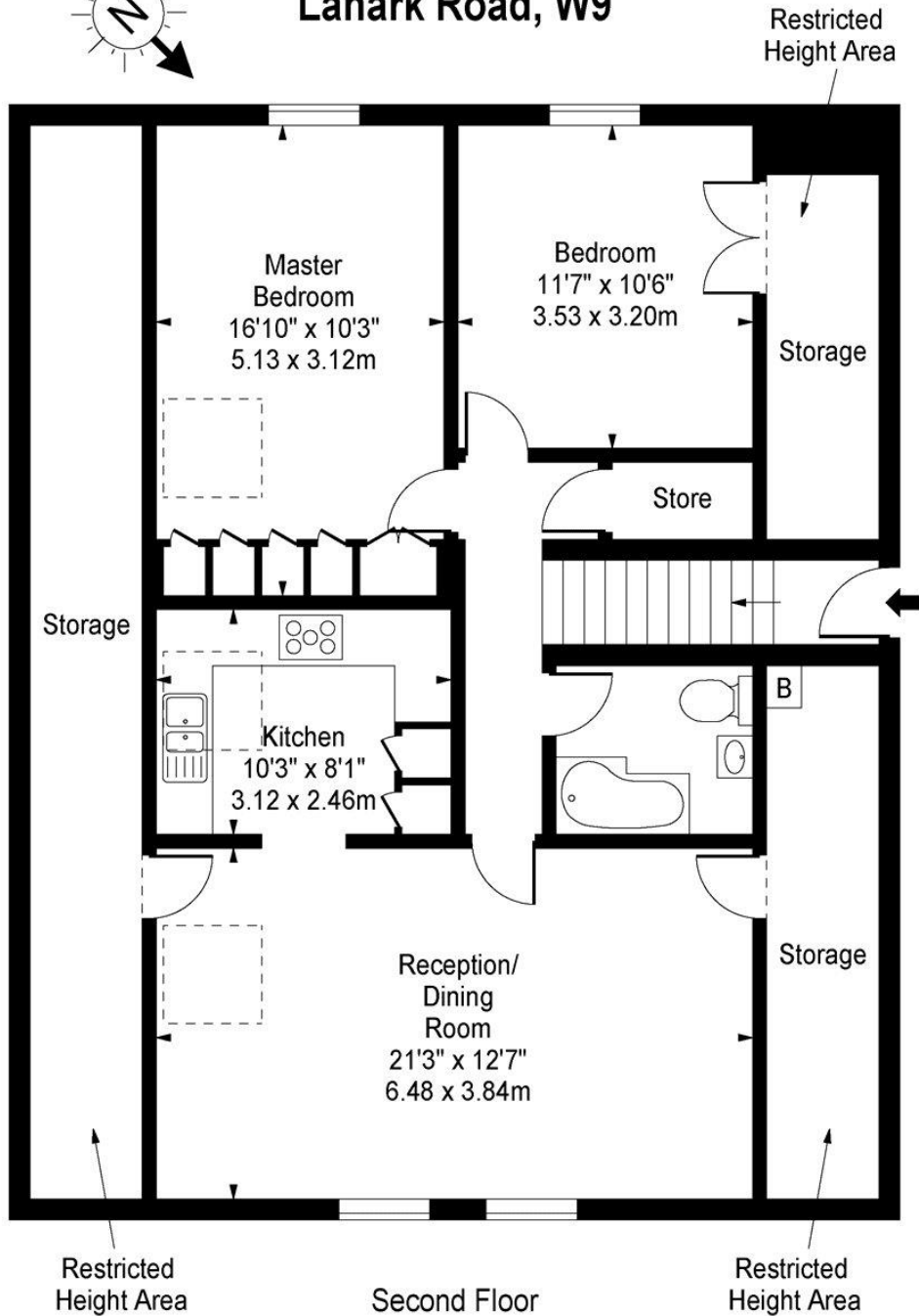
Chestertons Little Venice Lettings

26 Clifton Road
Maida Vale
London
W9 1SX
littlevenice@chestertons.co.uk
02072662369
chestertons.co.uk

Additional tenant charges apply (fees apply to non-AST tenancies only)
Tenancy Agreement Fee: £300
References per Tenant/Guarantor: £60
Inventory check (approx. £100 – £250 inc. VAT)
chestertons.co.uk/property-to-rent/applicable-fees



Lanark Road, W9



Approx Gross Internal Area **1149 Sq Ft - 106.74 Sq M**
(Including Restricted Height Area)

For Illustration Purposes Only - Not To Scale

www.goldlens.co.uk

Ref. No. 004408J

