



# Kilburn Park Road

London, NW6

£2,145 per month  
(£495 per week)

A delightful recently refurbished one bedroom apartment set on the raised ground floor of a period conversion located close to Paddington Recreational Ground. The property is well finished and enjoys many period features throughout.





# Kilburn Park Road

London, NW6

- Pet Friendly With Private Garden!
- Well Finished One Bedroom Garden Apartment
- Bright Reception Room With Bay Window
- Separate Kitchen With Access To The Garden
- Double Bedroom With Built-in Storage
- Modern Bathroom



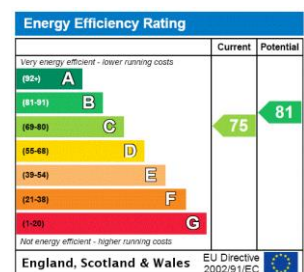


Pet friendly!

A delightful recently refurbished one bedroom apartment set on the raised ground floor of a period conversion located close to Paddington Recreational Ground. The property comprises; bright reception room, separate kitchen, double bedroom with built-in storage, modern bathroom and a private rear garden.

Located only moments from the open green spaces of Paddington Recreational Grounds and within close proximity of Maida Vale for its shops and cafes as well as the underground station for the

**Minimum Term:** 12 months  
**Deposit Required:** 5 weeks  
**Local Authority:** City Of Westminster  
**Council Tax Band:** D  
**EPC Rating:** C  
**Furnished**

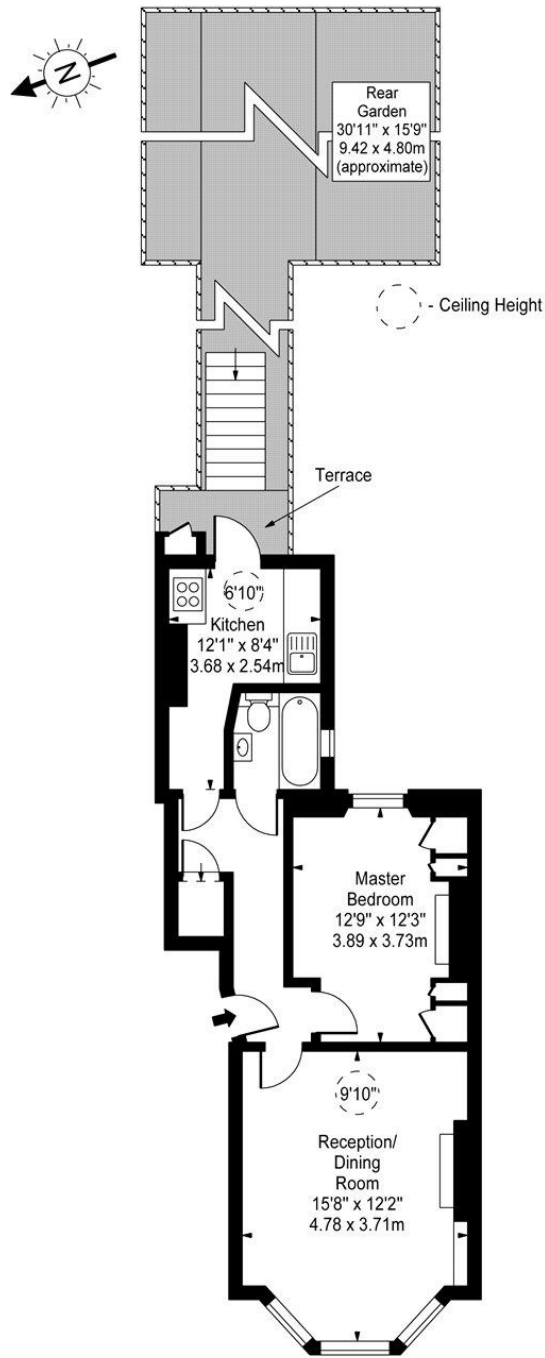


### *Chestertons Little Venice Lettings*

26 Clifton Road  
Maida Vale  
London  
W9 1SX  
littlevenice@chestertons.co.uk  
02072662369  
chestertons.co.uk

Additional tenant charges apply (fees apply to non-AST tenancies only)  
Tenancy Agreement Fee: £300  
References per Tenant/Guarantor: £60  
Inventory check (approx. £100 – £250 inc. VAT)  
chestertons.co.uk/property-to-rent/applicable-fees

# Kilburn Park Road, NW6



Raised Ground Floor

Approx Gross Internal Area **470 Sq Ft - 43.66 Sq M**

For Illustration Purposes Only - Not To Scale  
www.goldlens.co.uk  
Ref. No. 015530M

