



Randolph Avenue

Maida Vale, W9

£2,500 per month
(£576.92 per week)

Set on the first floor of a Victorian stucco fronted building is the bright and modern one bedroom apartment spanning approximately 590 square feet. EPC C.



Randolph Avenue

Maida Vale, W9

- A charming and modern apartment positioned on the first floor.
- Abundantly high ceilings throughout and plentiful natural light.
- Benefitting from a share in the freehold.
- Spanning approximately 590 square feet.

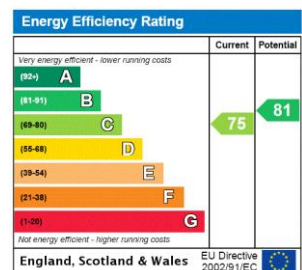


Set on the first floor of a Victorian stucco fronted building is the bright and modern one bedroom apartment spanning approximately 590 square feet.

With wonderfully high ceilings and an abundance of natural light throughout, the accommodation comprises a large open plan kitchen reception room with a large bay window overlooking Randolph Avenue, a spacious bedroom with plentiful storage and a modern and fully fitted bathroom.

Randolph Avenue is superbly located to take advantage of the amenities of Maida Vale, which include Paddington recreation

Minimum Term: 12 months
Deposit Required: 5 weeks
Local Authority: City of Westminster
Council Tax Band: E
EPC Rating: C
Unfurnished



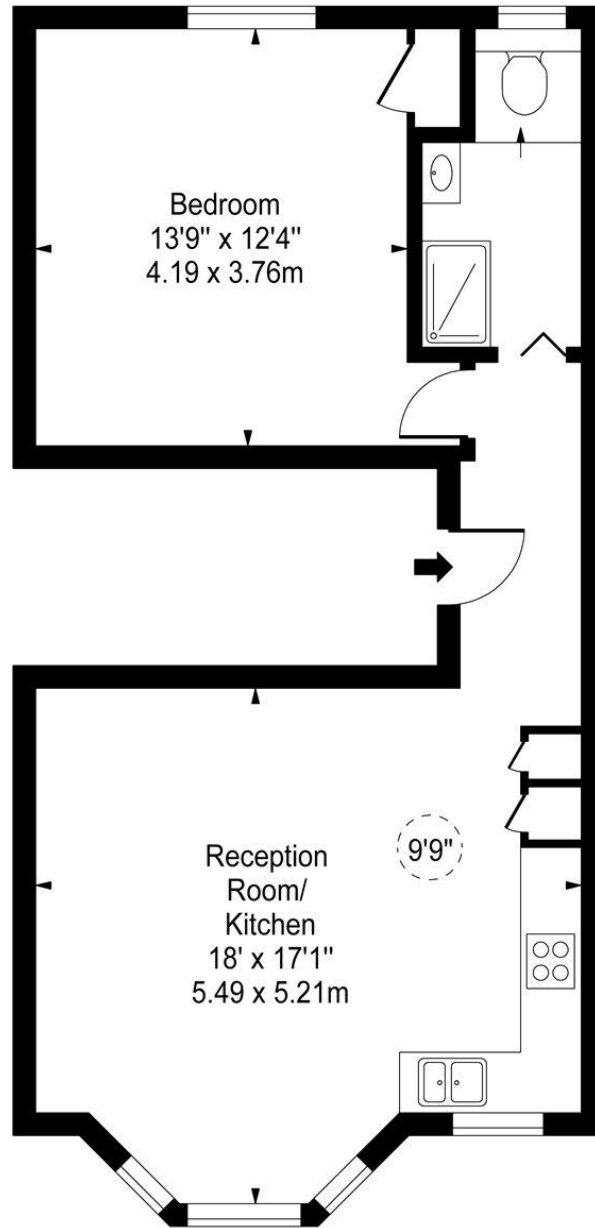
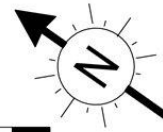
Chestertons Little Venice Lettings

26 Clifton Road
 Maida Vale
 London
 W9 1SX
 littlevenice@chestertons.co.uk
 02072662369
 chestertons.co.uk

Additional tenant charges apply (fees apply to non-AST tenancies only)
 Tenancy Agreement Fee: £300
 References per Tenant/Guarantor: £60
 Inventory check (approx. £100 – £250 inc. VAT)
chestertons.co.uk/property-to-rent/applicable-fees

Randolph Avenue, W9

 - Ceiling Height



First Floor

Approx Gross Internal Area **590 Sq Ft - 54.81 Sq M**

For Illustration Purposes Only - Not To Scale

