



Sutherland Avenue

Little Venice, W9

£3,750 per month
(£865.38 per week)

Rare to come to the market, this top floor two-bedroom, two-bathroom apartment is especially light and quiet. Its spectacular views of Formosa Gardens with a large private roof terrace and balcony.



Sutherland Avenue

Little Venice, W9

- Lovely Period Conversion
- Large Reception & Stunning Roof Terrace
- Two Double Bedrooms & Two Bathrooms
- Moments To Warwick Avenue
- EPC Rating C

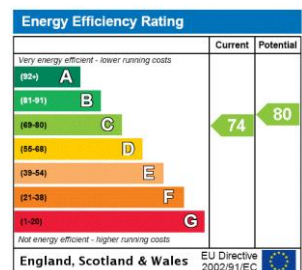


Rare to come to the market, this top floor two-bedroom, two-bathroom apartment is especially light and quiet. Its spectacular views of Formosa Gardens with a large private roof terrace and balcony.

The large sitting room with a feature fireplace opens up to a balcony with views of the communal gardens at one of their widest points, ensuring one of Little Venice's best views.

Within a few minutes' walk to Warwick Avenue tube station, this furnished apartment in an elegant Victorian conversion is situated in the top end of the broad, residential and leafy Sutherland Avenue

Minimum Term: 12 months
Deposit Required: 5 weeks
Local Authority: Westminster City Council
Council Tax Band: G
EPC Rating: C
Furnished

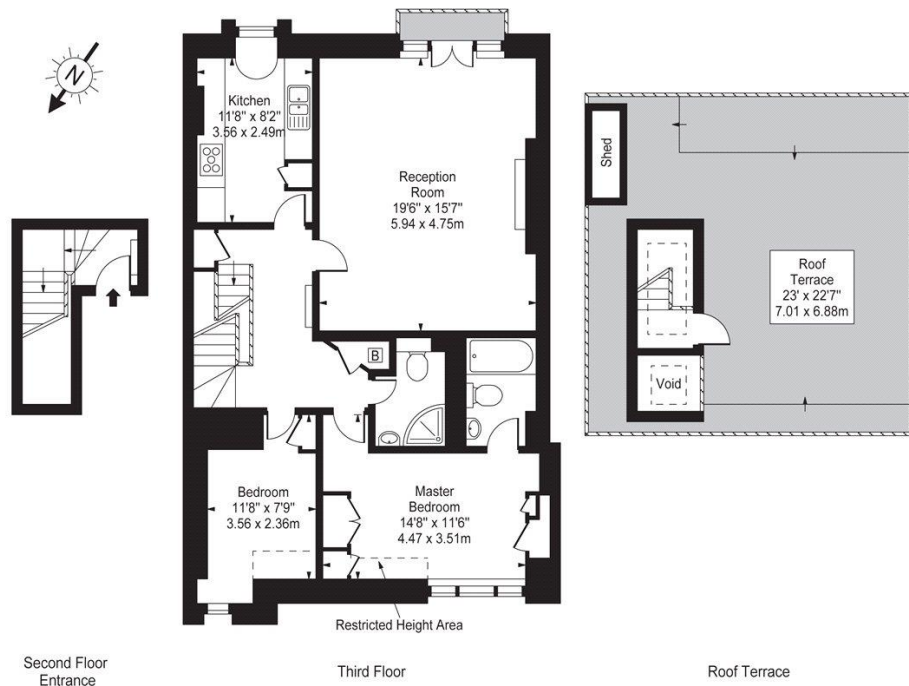


Chestertons Little Venice Lettings

26 Clifton Road
Maida Vale
London
W9 1SX
littlevenice@chestertons.co.uk
02072662369
chestertons.co.uk

Additional tenant charges apply (fees apply to non-AST tenancies only)
Tenancy Agreement Fee: £300
References per Tenant/Guarantor: £60
Inventory check (approx. £100 – £250 inc. VAT)
chestertons.co.uk/property-to-rent/applicable-fees

Sutherland Avenue, W9



Approx Gross Internal Area **1010 Sq Ft - 93.83 Sq M**
 (Including Restricted Height Area)

For Illustration Purposes Only - Not To Scale
 www.goldlens.co.uk
 Ref. No. 00711

